

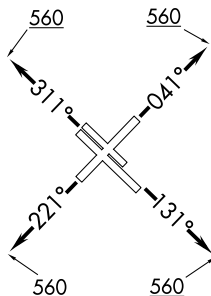
PTRON SEVEN DEPARTURE (RNAV)

D-ATIS
124.6
CLNC DEL
125.45
CPDLC
GND CON
121.9
HOBBY TOWER
118.7 256.9
HOUSTON DEP CON
127.125 269.075

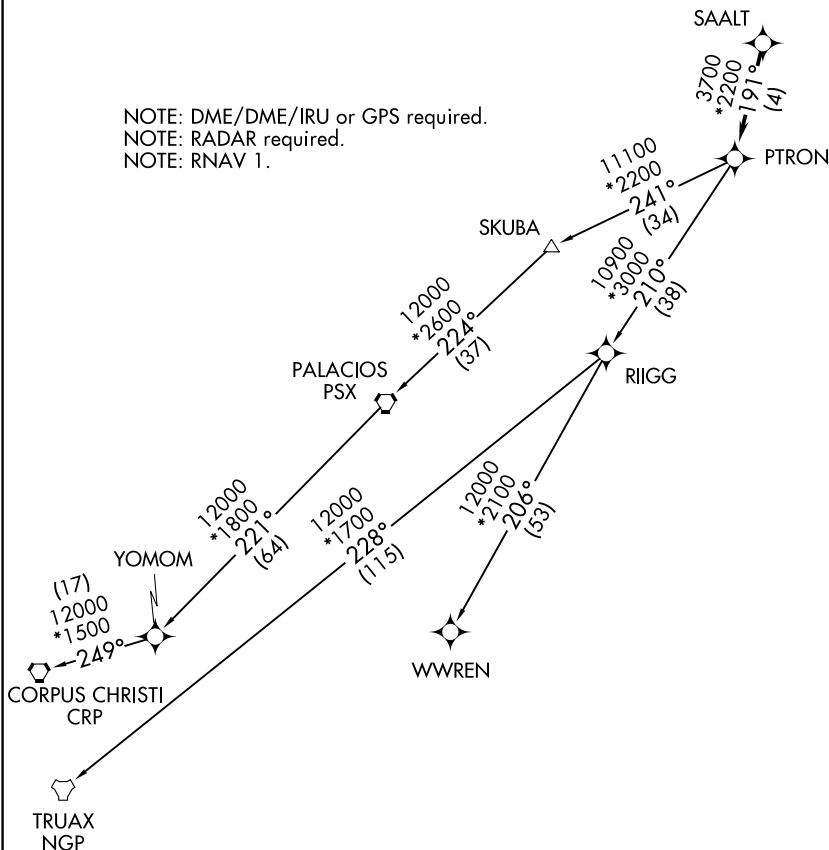
**TOP ALTITUDE:
16000**

TAKEOFF MINIMUMS

Rwy 4: Standard with minimum climb of 500' per NM to 900.
Rwy 13L: Standard with minimum climb of 500' per NM to 3600.
Rwy 13R: Standard with minimum climb of 500' per NM to 3800.
Rwy 22: Standard with minimum climb of 500' per NM to 1900.
Rwys 31L/R: Standard with minimum climb of 500' per NM to 560.



NOTE: DME/DME/IRU or GPS required.
NOTE: RADAR required.
NOTE: RNAV 1.



NOTE: Chart not to scale.

(NARRATIVE ON FOLLOWING PAGE)

SC-5, 02 DEC 2021 to 30 DEC 2021

SC-5, 02 DEC 2021 to 30 DEC 2021

PTRON SEVEN DEPARTURE (RNAV)



DEPARTURE ROUTE DESCRIPTION

TAKEOFF RUNWAY 4: Climb on heading 041° to 560, expect RADAR vectors to SAALT, thence. . . .

TAKEOFF RUNWAYS 13L/R: Climb on heading 131° to 560, expect RADAR vectors to SAALT, thence. . . .

TAKEOFF RUNWAY 22: Climb on heading 221° to 560, expect RADAR vectors to SAALT, thence. . . .

TAKEOFF RUNWAYS 31L/R: Climb on heading 311° to 560, expect RADAR vectors to SAALT, thence. . . .

. . . .on track 191° to PTRON, then on (transition). Maintain 16000, expect filed altitude 10 minutes after departure.

CORPUS CHRISTI TRANSITION (PTRON7.CRP)

PALACIOS TRANSITION (PTRON7.PSX)

TRUAX TRANSITION (PTRON7.NGP)

WWREN TRANSITION (PTRON7.WWREN)

YOMOM TRANSITION (PTRON7.YOMOM)

SC-5, 02 DEC 2021 to 30 DEC 2021

SC-5, 02 DEC 2021 to 30 DEC 2021