

RNAV 1- DME/DME/IRU or GPS.
 KELPP, PEGLG, and SEAGL TRANSITIONS, RNP 1- GPS.
 RADAR required.

HOUSTON APP CON
 119.625 226.675
 D-ATIS
 124.6

See following page
 for Arrival Routes.
 BAYYY

15000 250K
 12000

8000 SHUDL *1400 271° (19)
 *7400 312° (27)
 8000 GEEAR *1400 272° (46)
 092° 10 NM

8000 SLYCE *1400 272° (46)
 12000 JEPEG *1400 248° (31)
 12000 KCEEE *1400 272° (29)
 089° 10 NM

12000 SHREQ *1800 248° (56)
 12000 LEEVILLE LEV *1700 269° (124)
 283° 103° 10 NM

12000 SHLL *1400 133° (148)
 12000 SEAGL *1400 352° (151)
 12000 PEGLG *1400 333° (148)
 12000 KELPP *1400 313° (157)

NOTE: Expect runway assignment from Houston TRACON upon initial contact.
 NOTE: Corresponding RNAV STAR is BAYYY. Expect BAYYY when HOU is landing 4/13.
 NOTE: For turbojet and turboprop aircraft capable of 280K or greater only.
 NOTE: Turbojet aircraft descend via mach number until intercepting 280K.
 Maintain 280K until slowed by the STAR.

- KCEEE TRANSITION (KCEEE.PUCKS4)
- KELPP TRANSITION (KELPP.PUCKS4)
- LEEVILLE TRANSITION (LEV.PUCKS4)
- PEGLG TRANSITION (PEGLG.PUCKS4)
- SEAGL TRANSITION (SEAGL.PUCKS4)
- SEMMES TRANSITION (SJI.PUCKS4)
- SHLL TRANSITION (SHLL.PUCKS4)

NOTE: Chart not to scale.

(CONTINUED ON FOLLOWING PAGE)

PUCKS FOUR ARRIVAL (RNAV) Transition Routes
 (BAYYY.PUCKS4) 07OCT21

HOUSTON, TEXAS
 WILLIAM P HOBBY (HOU)

(BAYYY.PUCKS4) 21280
 PUCKS FOUR ARRIVAL (RNAV) Transition Routes
 AL-198 (FAA)

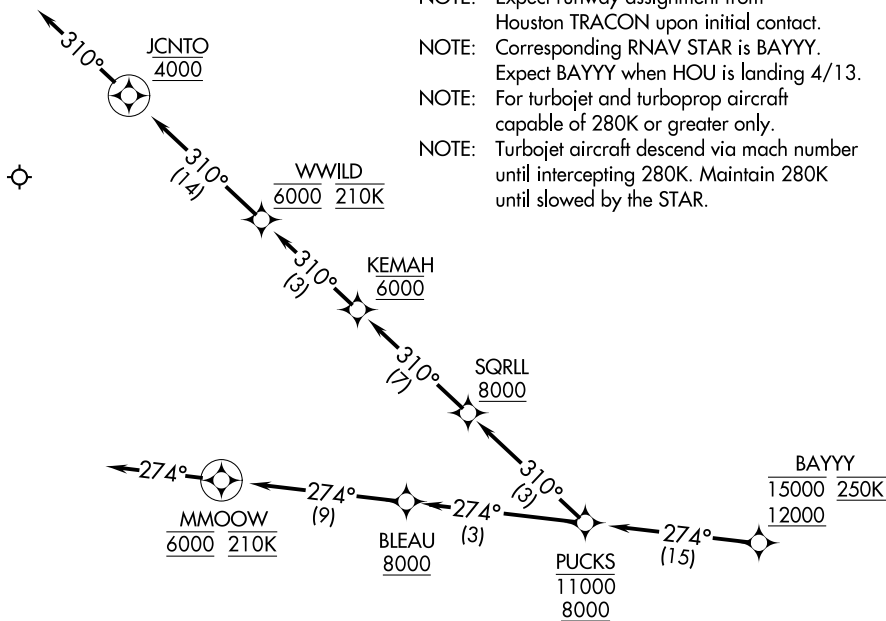
WILLIAM P HOBBY (HOU)
 HOUSTON, TEXAS

PUCKS FOUR ARRIVAL (RNAV) Arrival Routes

HOUSTON APP CON
119.625 226.675
D-ATIS
124.6

RNAV 1- DME/DME/IRU or GPS.
RADAR required.

- NOTE: Expect runway assignment from Houston TRACON upon initial contact.
- NOTE: Corresponding RNAV STAR is BAYYY. Expect BAYYY when HOU is landing 4/13.
- NOTE: For turbojet and turboprop aircraft capable of 280K or greater only.
- NOTE: Turbojet aircraft descend via mach number until intercepting 280K. Maintain 280K until slowed by the STAR.



ARRIVAL ROUTE DESCRIPTION

From BAYYY on track 274° to cross PUCKS between 8000 and 11000.

LANDING RUNWAY 22: From PUCKS on track 310° to cross SQRLL at or above 8000, then on track 310° to cross KEMAH at 6000, then on track 310° to cross WWILD at 6000 and at 210K, then on track 310° to cross JCNT0 at 4000, then on track 310°. Expect RADAR vectors to final approach course.

LANDING RUNWAYS 31L/R: From PUCKS on track 274° to cross BLEAU at or above 8000, then on track 274° to cross MMOOW at 6000 and at 210K, then on track 274°. Expect RADAR vectors to final approach course.