

**TOP ALTITUDE:
16000**



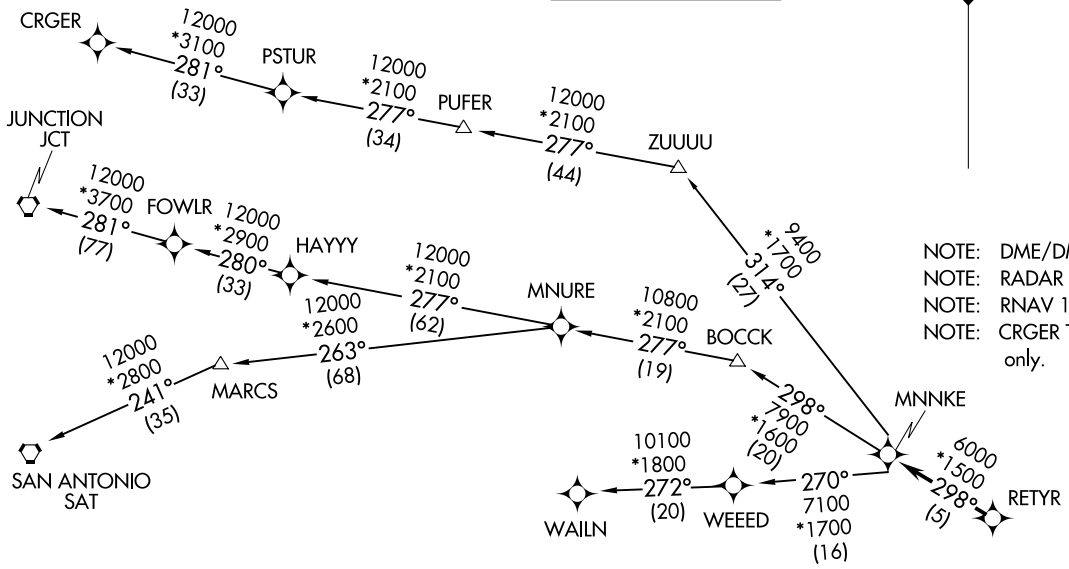
- D-ATIS 124.6
- CLNC DEL 125.45
- CPDLC 121.9
- GND CON 121.9
- HOBBY TOWER 118.7 256.9
- HOUSTON DEP CON 126.675 339.8

RETRYR SIX DEPARTURE (RNAV)
(RETRYR6.RETRYR) 0700CT21

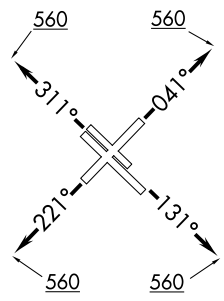
(RETRYR6.RETRYR) 21280
RETRYR SIX DEPARTURE (RNAV)

AL-198 (FAA)

WILLIAM P HOBBY (EOT)
HOUSTON, TEXAS



- NOTE: DME/DME/IRU or GPS required.
- NOTE: RADAR required.
- NOTE: RNAV 1.
- NOTE: CRGER TRANSITION ATC assigned only.



TAKEOFF MINIMUMS

Rwys 4, 13L/R, 31L/R:
Standard with minimum climb of 500' per NM to 560.

Rwy 22: Standard with minimum climb of 500' per NM to 800.

NOTE: Chart not to scale.

(NARRATIVE ON FOLLOWING PAGE)

HOUSTON, TEXAS
WILLIAM P HOBBY (EOT)

RETYR SIX DEPARTURE (RNAV)



DEPARTURE ROUTE DESCRIPTION

TAKEOFF RUNWAY 4: Climb on heading 041° to 560, expect RADAR vectors to RETYR, thence

TAKEOFF RUNWAYS 13L/R: Climb on heading 131° to 560, expect RADAR vectors to RETYR, thence

TAKEOFF RUNWAY 22: Climb on heading 221° to 560, expect RADAR vectors to RETYR, thence

TAKEOFF RUNWAYS 31L/R: Climb on heading 311° to 560, expect RADAR vectors to RETYR, thence

. . . . on track 298° to MNNKE, then on (transition). Maintain 16000, expect filed altitude 10 minutes after departure.

CRGR TRANSITION (RETYR6.CRGR)

JUNCTION TRANSITION (RETYR6.JCT)

MNURE TRANSITION (RETYR6.MNURE)

SAN ANTONIO TRANSITION (RETYR6.SAT)

WAILN TRANSITION (RETYR6.WAILN)

SC-5, 02 DEC 2021 to 30 DEC 2021

SC-5, 02 DEC 2021 to 30 DEC 2021