

TKNIQ THREE ARRIVAL (RNAV)
(TKNIQ.TKNIQ3) 07OCT21

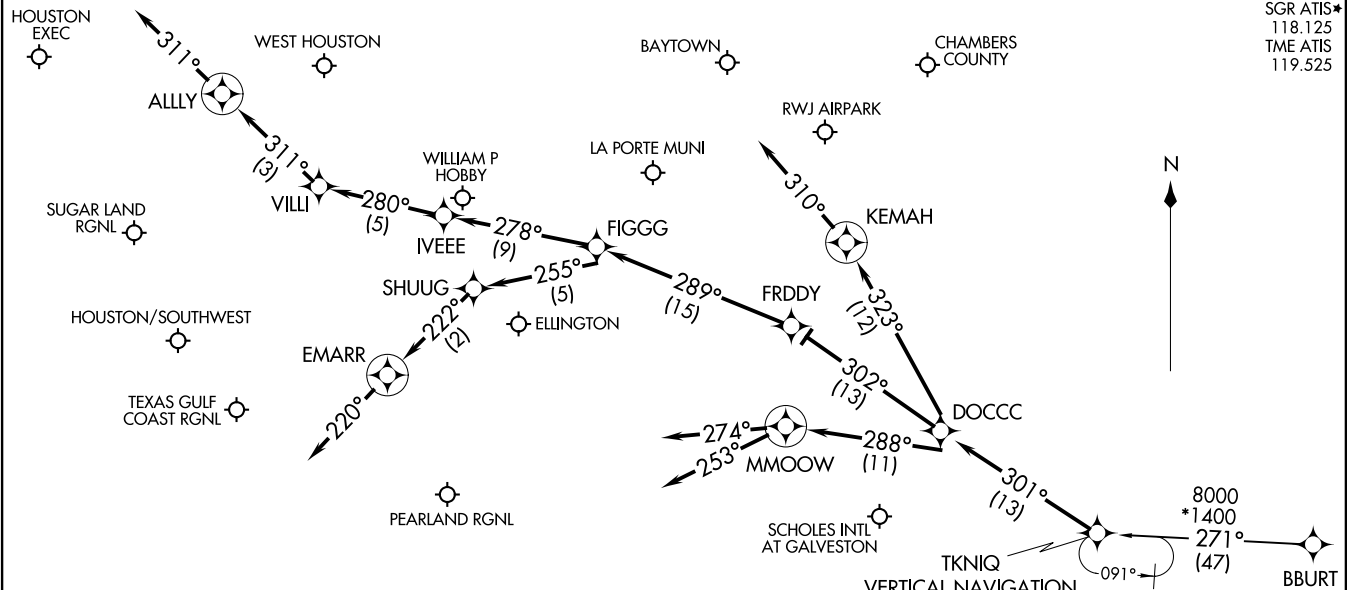
TKNIQ THREE ARRIVAL (RNAV)
(TKNIQ.TKNIQ3) 21336

AL-198 (FAA)

HOUSTON, TEXAS

RNAV 1 - DME/DME/IRU or GPS.
RADAR required.

HOUSTON APP CON
119.625 226.675
EFD ATIS
135.575 269.9
HOU D-ATIS
124.6
SGR ATIS*
118.125
TME ATIS
119.525



NOTE: Turbojet and turboprop aircraft only.
NOTE: ATC assigned only for aircraft landing HOU.

VERTICAL NAVIGATION
PLANNING INFORMATION
HOU TURBOJETS: Expect 12000 250K
SOUTH SATELLITE TURBOJETS: Expect 12000 280K

(NARRATIVE ON FOLLOWING PAGE)

NOTE: Chart not to scale.

HOUSTON, TEXAS

ARRIVAL ROUTE DESCRIPTION

BBURT TRANSITION (BBURT.TKNIQ3)

From TKNIQ on track 301° to DOCCC.

LANDING HOU RUNWAY 4: From DOCCC on track 302° to FRDDY, then on track 289° to FIGGG, then on track 255° to SHUUG, then on track 222° to EMARR, then on track 220°. Expect RADAR vectors to final approach course.

LANDING HOU RUNWAYS 13L/R: From DOCCC on track 302° to FRDDY, then on track 289° to FIGGG, then on track 278° to IVEEE, then on track 280° to VILLI, then on track 311° to ALLY, then on track 311°. Expect RADAR vectors to final approach course.

LANDING HOU RUNWAY 22: From DOCCC on track 323° to KEMAH, then on track 310°. Expect RADAR vectors to final approach course.

LANDING HOU RUNWAYS 31L/R: From DOCCC on track 288° to MMOOW, then on track 274°. Expect RADAR vectors to final approach course.

LANDING AXH, EFD, GLS, HPY, IWS, LBX, LVJ, SGR, TME, TØØ, T41, 54T:
From DOCCC on track 288° to MMOOW, then on track 253°. Expect RADAR vectors to final approach course.

SC-5, 02 DEC 2021 to 30 DEC 2021

SC-5, 02 DEC 2021 to 30 DEC 2021