

TSHRT ONE ARRIVAL

Transition Routes

HOUSTON, TEXAS

HOUSTON APP CON
 119.175
 EFD ATIS
 135.575 269.9
 HOU D-ATIS
 124.6
 SGR ATIS ★
 118.125
 TME ATIS
 119.525

SAN ANTONIO
 116.8 SAT
 Chan 115
 N29°38.64'
 W98°27.68'
 L-19, H-7

EAGLE LAKE
 116.4 ELA
 Chan 111

VICTORIA
 109.0 VCT
 Chan 27

9500
 100°
 (114)

7000
 041°
 (23)

BELLR
 N29°19.49'-W096°05.32'
 TURBOJET:
 12000 250K

BIGTX
 N28°49.30'
 W96°36.94'

HYDRL
 N29°03.22'
 W96°24.19'

PALACIOS
 117.3 PSX
 Chan 120
 N28°45.87'
 W96°18.37'
 L-20-21, H-7

R-098
 R-129
 R-169

029°
 (118)

10 NM
 20°
 R-336

029°
 (110)

R-274
 R-251

ALIEF
 N28°41.23'
 W96°44.31'

LMEDA
 N28°27.95'
 W96°56.37'

9500
 029°
 (43)

CORPUS CHRISTI
 115.5 CRP
 Chan 102
 N27°54.23'
 W97°26.69'
 L-20-21, H-7

NOTE: RADAR required.
 NOTE: DME/DME/IRU or GPS equipped turbojet and turboprop aircraft landing HOU must file the BELLR (RNAV) STAR.
 NOTE: DME required for holding at HYDRL.

NOTE: Chart not to scale. (CONTINUED ON FOLLOWING PAGE)

CORPUS CHRISTI TRANSITION (CRP.TSHRT1): From over CRP VORTAC on CRP R-029 to HYDRL, then on IAH R-221 to BELLR. Thence
PALACIOS TRANSITION (PSX.TSHRT1): From over PSX VORTAC on PSX R-011 to BELLR. Thence
SAN ANTONIO TRANSITION (SAT.TSHRT1): From over SAT VORTAC on SAT R-100 to HYDRL, then on IAH R-221 to BELLR. Thence

See following page for arrival routes.

SC-5, 02 DEC 2021 to 30 DEC 2021

SC-5, 02 DEC 2021 to 30 DEC 2021

TSHRT ONE ARRIVAL

Transition Routes

HOUSTON, TEXAS

TSHRT ONE ARRIVAL

Arrival Routes

HOUSTON, TEXAS

HOUSTON APP CON

119.175

EFD ATIS

135.575 269.9

HOU D-ATIS

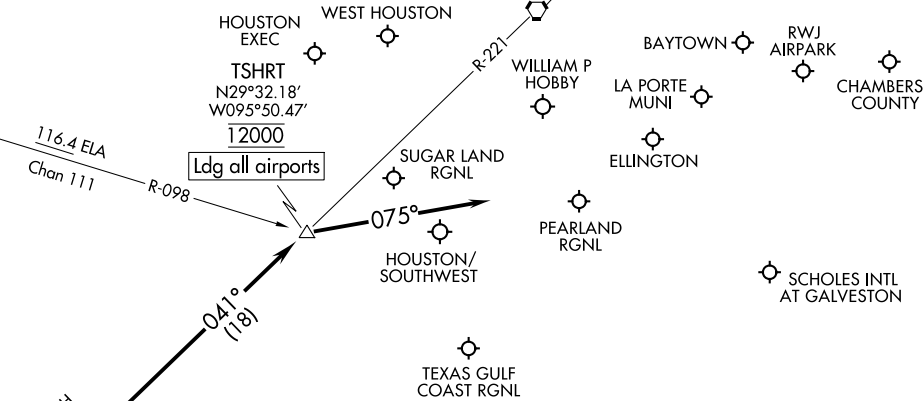
124.6

SGR ATIS ★

118.125

TME ATIS

119.525



SC-5, 02 DEC 2021 to 30 DEC 2021

SC-5, 02 DEC 2021 to 30 DEC 2021

NOTE: RADAR required.

NOTE: DME/DME/IRU or GPS equipped turbojet and turboprop aircraft landing HOU must file the BELLR (RNAV) STAR.

NOTE: DME required for holding at HYDRL.

NOTE: Chart not to scale.

ARRIVAL ROUTE DESCRIPTION

... from over BELLR on IAH R-221 to cross TSHRT at 12000. From TSHRT fly heading 075° for vectors to final approach course.

TSHRT ONE ARRIVAL

Arrival Routes

HOUSTON, TEXAS