

BLUEGRASS FOUR DEPARTURE

D-ATIS DEP 135.3
 CLNC DEL
 127.175
 GND CON
 121.7
 CINCINNATI TOWER
 118.3 360.85 (RWYS 18C/36C, 9/27)
 118.975 360.85 (RWY 18L/36R)
 133.325 360.85 (RWY 18R/36L)
 CINCINNATI DEP CON
 126.65 254.25 (001°-180°)
 128.7 254.25 (181°-360°)

**TOP ALTITUDE:
 (JETS) 6000/(PROPS) 4000**

CINCINNATI
 117.3 CVG
 Chan 120
 N39°00.96'
 W84°42.20'

LOCALIZER 110.75
 I-VAC
 Chan 44 (Y)
 N39°04.42'-W84°41.08'

NICID
 I-CVG [0.6]
 N39°04.69'
 W84°40.11'

LOCALIZER 109.9
 I-CVG
 Chan 36
 N39°04.06'-W84°40.12'

LOCALIZER 110.15
 I-CIZ
 Chan 38(Y)
 N39°01.53'-W84°38.81'

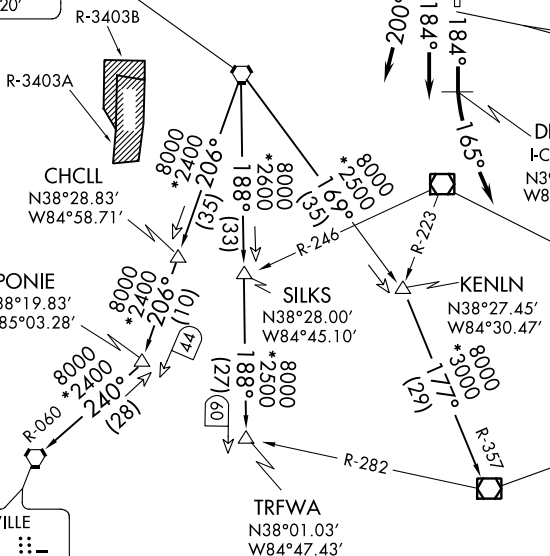
DRUSS
 I-CIZ [1.5]
 N39°00.03'
 W84°38.82'

FALMOUTH
 117.0 FLM
 Chan 117

LEXINGTON
 112.6 HYK
 Chan 73
 N37°57.98'-W84°28.35'
 L-26-27, H-10

LOUISVILLE
 114.8 IUV
 Chan 95
 N38°06.21'
 W85°34.65'

L-26-27, H-5-10



TAKEOFF MINIMUMS

Rwys 9, 18L/C/R, 27, 36L/C/R: Standard.

NOTE: DME required Rwy 18L/36L/36C.

NOTE: DME required for Louisville transition.

NOTE: RADAR required.

NOTE: TURBOJETS accelerate to 250K until reaching 10000 MSL, if unable, advise ATC.

(NARRATIVE ON FOLLOWING PAGE)

NOTE: Chart not to scale.

BLUEGRASS FOUR DEPARTURE

SE-1, 02 DEC 2021 to 30 DEC 2021

SE-1, 02 DEC 2021 to 30 DEC 2021

BLUEGRASS FOUR DEPARTURE

AL-655 (FAA)

COVINGTON, KENTUCKY



DEPARTURE ROUTE DESCRIPTION

- TAKEOFF RUNWAY 9: Climb heading 094° or as assigned, thence . . .
- TAKEOFF RUNWAY 18L: Climb heading 184° until 1.5 DME south of I-CIZ, then turn left heading 165°, thence . . .
- TAKEOFF RUNWAY 18R: Turn right heading 200°, thence . . .
- TAKEOFF RUNWAY 18C: Climb heading 184° or as assigned, thence . . .
- TAKEOFF RUNWAY 27: Climb heading 274° or as assigned, thence . . .
- TAKEOFF RUNWAY 36L: Climb heading 004° until 1.2 DME north of I-VAC, then turn left heading 330°, thence . . .
- TAKEOFF RUNWAY 36C: Climb heading 004° until 0.6 DME north of I-CVG, then turn left heading 330°, thence . . .
- TAKEOFF RUNWAY 36R: Climb heading 004° or as assigned, thence . . .

. . . on RADAR vectors to transition or filed/assigned route. Turbojet aircraft maintain 6000, all other aircraft maintain 4000. Expect requested altitude/flight level ten (10) minutes after departure.

SPECIAL INSTRUCTIONS: APPROPRIATE DEPARTURE FREQUENCY WILL BE ASSIGNED BY ATC.

- LEXINGTON TRANSITION (BLGRS4.HYK): From over CVG VORTAC on CVG R-169 and HYK R-357 to HYK VOR/DME.
- LOUISVILLE TRANSITION (BLGRS4.IIU): From over CVG VORTAC on CVG R-206 and IIU R-060 to IIU VORTAC.
- TRFWA TRANSITION (BLGRS4.TRFWA): From over CVG VORTAC on CVG R-188 to TRFWA.

SE-1, 02 DEC 2021 to 30 DEC 2021

SE-1, 02 DEC 2021 to 30 DEC 2021