

**(CEGRM.CEGRM5) 20198**  
**CEGRM FIVE ARRIVAL (RNAV)**

CINCINNATI/NORTHERN KENTUCKY INTL (CVG)  
 AL-655 (FAA) COVINGTON, KENTUCKY

CINCINNATI APP CON  
 119.7 363.15 (090°-269°)  
 123.875 363.15 (270°-089°)  
 D-ATIS ARR 134.375

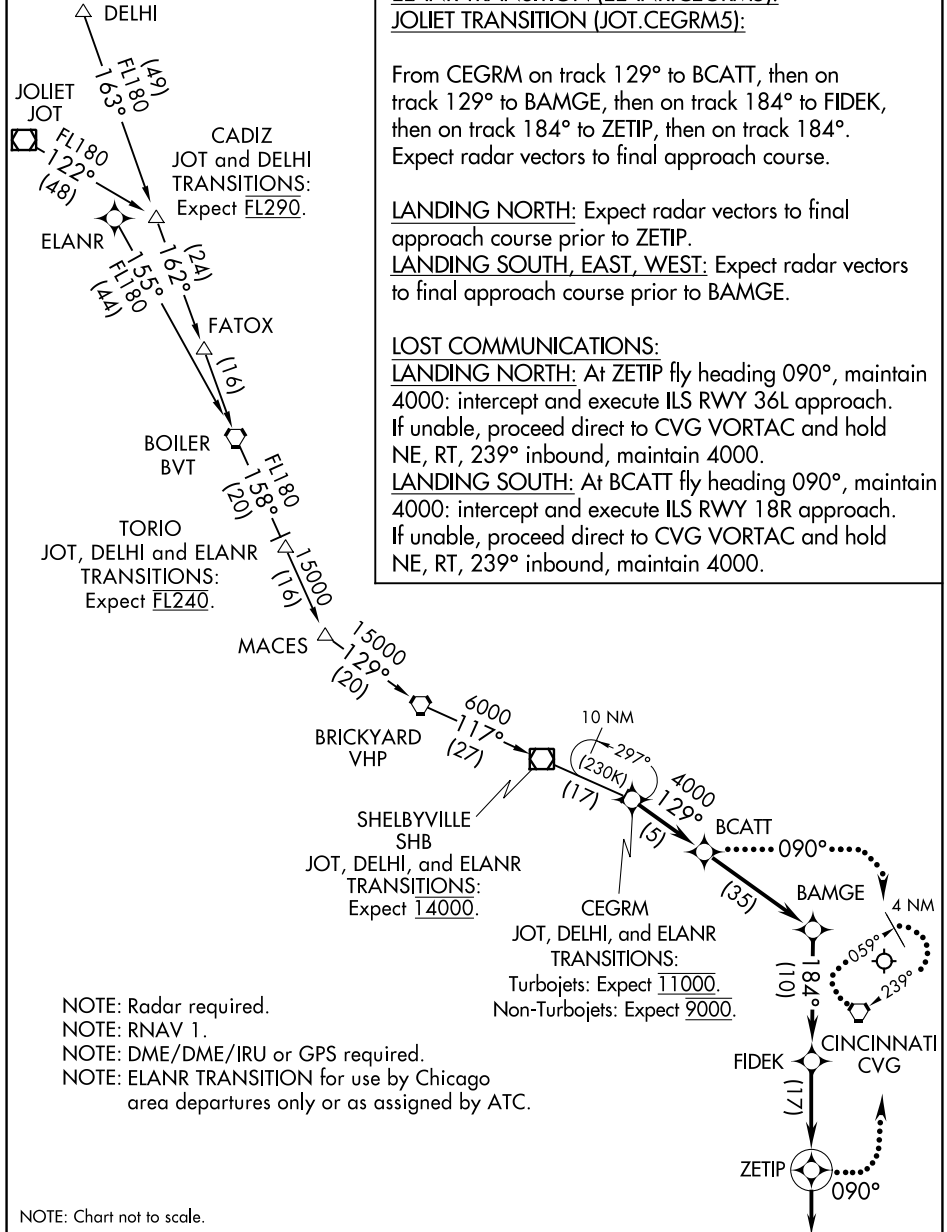
**ARRIVAL ROUTE DESCRIPTION**

DELHI TRANSITION (DELHI.CEGRM5):  
ELANR TRANSITION (ELANR.CEGRM5):  
JOLIET TRANSITION (JOT.CEGRM5):

From CEGRM on track 129° to BCATT, then on track 129° to BAMGE, then on track 184° to FIDEK, then on track 184° to ZETIP, then on track 184°.  
 Expect radar vectors to final approach course.

LANDING NORTH: Expect radar vectors to final approach course prior to ZETIP.  
LANDING SOUTH, EAST, WEST: Expect radar vectors to final approach course prior to BAMGE.

LOST COMMUNICATIONS:  
LANDING NORTH: At ZETIP fly heading 090°, maintain 4000: intercept and execute ILS RWY 36L approach. If unable, proceed direct to CVG VORTAC and hold NE, RT, 239° inbound, maintain 4000.  
LANDING SOUTH: At BCATT fly heading 090°, maintain 4000: intercept and execute ILS RWY 18R approach. If unable, proceed direct to CVG VORTAC and hold NE, RT, 239° inbound, maintain 4000.



NOTE: Radar required.  
 NOTE: RNAV 1.  
 NOTE: DME/DME/IRU or GPS required.  
 NOTE: ELANR TRANSITION for use by Chicago area departures only or as assigned by ATC.

NOTE: Chart not to scale.

**CEGRM FIVE ARRIVAL (RNAV)**  
**(CEGRM.CEGRM5) 29MAR18**

CINCINNATI/NORTHERN KENTUCKY INTL (CVG)  
 COVINGTON, KENTUCKY

SE-1, 02 DEC 2021 to 30 DEC 2021

SE-1, 02 DEC 2021 to 30 DEC 2021