

HAGOL FOUR DEPARTURE (RNAV)

AL-655 (FAA)

COVINGTON, KENTUCKY

D-ATIS DEP 135.3  
 CLNC DEL  
 127.175  
 CINCINNATI TOWER  
 118.3 (RWYS 18C/36C, 9/27)  
 118.975 360.85 (RWY 18L/36R)  
 133.325 (RWY 18R/36L)  
 GND CON  
 121.7  
 CINCINNATI DEP CON  
 126.65 254.25 (001°-180°)  
 128.7 254.25 (181°-360°)

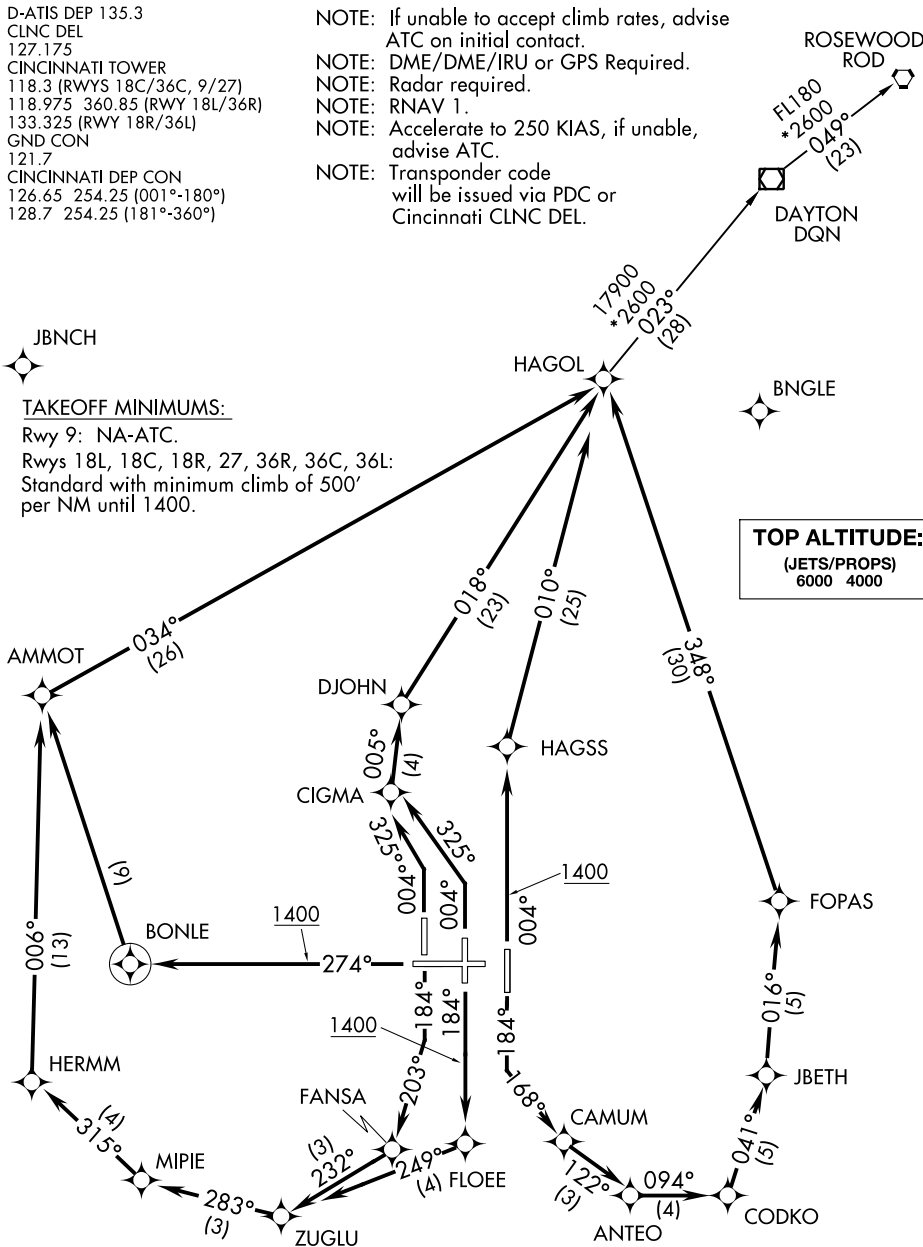
NOTE: If unable to accept climb rates, advise ATC on initial contact.  
 NOTE: DME/DME/IRU or GPS Required.  
 NOTE: Radar required.  
 NOTE: RNAV 1.  
 NOTE: Accelerate to 250 KIAS, if unable, advise ATC.  
 NOTE: Transponder code will be issued via PDC or Cincinnati CLNC DEL.

JBNCH

TAKEOFF MINIMUMS:

Rwy 9: NA-ATC.  
 Rwys 18L, 18C, 18R, 27, 36R, 36C, 36L:  
 Standard with minimum climb of 500' per NM until 1400.

**TOP ALTITUDE:**  
 (JETS/PROPS)  
 6000 4000



NOTE: Chart not to scale.

(NARRATIVE ON FOLLOWING PAGE)

SE-1, 02 DEC 2021 to 30 DEC 2021

SE-1, 02 DEC 2021 to 30 DEC 2021



DEPARTURE ROUTE DESCRIPTION

TAKEOFF RUNWAY 18L: Climb heading 184° to intercept course 168° to CAMUM, then on depicted route to HAGOL, thence....

TAKEOFF RUNWAY 18C: Climb heading 184° to 1400, then direct FLOEE, then on depicted route to HAGOL, thence....

TAKEOFF RUNWAY 18R: Climb heading 184° to intercept course 203° to FANSA, then on depicted route to HAGOL, thence....

TAKEOFF RUNWAY 27: Climb heading 274° to 1400, then direct BONLE, then right turn direct AMMOT, then on depicted route to HAGOL, thence....

TAKEOFF RUNWAY 36R: Climb heading 004° to 1400, then direct HAGSS, then on depicted route to HAGOL, thence....

TAKEOFF RUNWAY 36C: Climb heading 004° to intercept course 325° to CIGMA, then on depicted route to HAGOL, thence....

TAKEOFF RUNWAY 36L: Climb heading 004° to intercept course 325° to CIGMA, then on depicted route to HAGOL, thence....

....turbojet aircraft maintain 6000, all other aircraft maintain 4000. Expect clearance to filed altitude within ten (10) minutes after departure.

DAYTON TRANSITION (HAGOL4.DQN):

ROSEWOOD TRANSITION (HAGOL4.ROD):

SE-1, 02 DEC 2021 to 30 DEC 2021

SE-1, 02 DEC 2021 to 30 DEC 2021