

LOC/DME I-SIC 111.55 Chan 52 (Y)	APP CRS 186°	Rwy Idg TDZE 875 Apt Elev 896	11000
--	------------------------	---	--------------

ILS RWY 18C (SA CAT I & II)

CINCINNATI/NORTHERN KENTUCKY INTL (CVG)

RADAR required for procedure entry. DME or RADAR required.

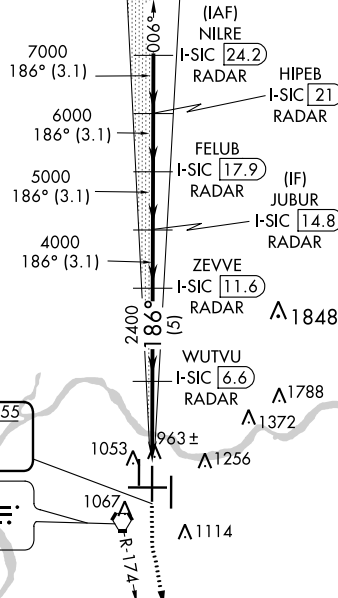
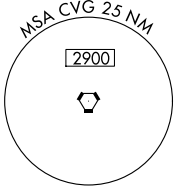
Simultaneous approach authorized. SA CAT I: Requires specific OPSPEC, MSPEC, or LOA approval and use of HUD to DH.
SA CAT II: Reduced Lighting: Requires specific OPSPEC, MSPEC, or LOA approval and use of autoland or HUD to touchdown.

MALSR



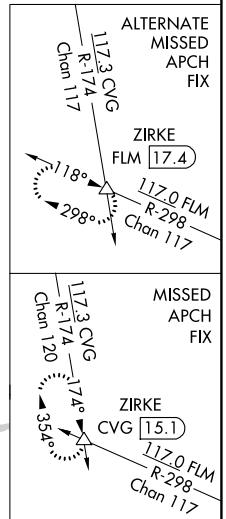
MISSED APPROACH: Climb to 1500 then climbing left turn to 3000 on CVG R-174 to ZIRKE INT/CVG 15.1 DME and hold.

D-ATIS ARR 134.375 DEP 135.3	CINCINNATI APP CON 119.7 363.15 (090°-269°) 123.875 363.15 (270°-089°)	CINCINNATI TOWER 118.975 360.85 (Rwy 18L/36R) 118.3 (Rwys 18C/36C, 09/27) 133.325 (Rwy 18R/36L)	GND CON 121.7	CLNC DEL 127.175
---	--	---	-------------------------	----------------------------

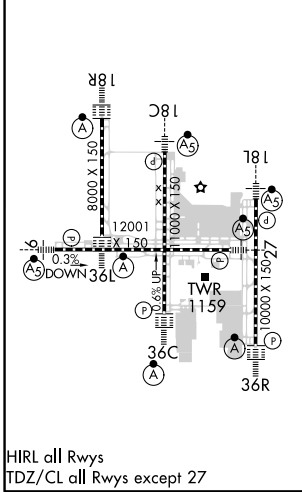


LOCALIZER 111.55
I-SIC [Symbol]
Chan 52 (Y)

CINCINNATI 117.3 CVG
Chan 120



ELEV 896	D	TDZE 875
-----------------	----------	-----------------



VGSI and ILS glidepath not coincident (VGSI Angle 3.00/TCH 71).

NILRE I-SIC 24.2 RADAR	HIPEB I-SIC 21 RADAR	FELUB I-SIC 17.9 RADAR	JUBUR I-SIC 14.8 RADAR	ZEVVE I-SIC 11.6 RADAR	WUTVU I-SIC 6.6 RADAR
8000	7000	6000	5000	4000	2400
GS 3.00° TCH 55					
-3.1 NM		-3.1 NM		-5 NM	
1500	3000	ZIRKE	CVG R-174		
CATEGORY A		CATEGORY B		CATEGORY C	
S-ILS 18C		SA CAT I RA 191/16		150 DA 1025	
S-ILS 18C		SA CAT II RA 100/12		100 DA 975	

SA CATEGORY I & II ILS-SPECIAL AIRCREW & AIRCRAFT CERTIFICATION REQUIRED

SE-1, 02 DEC 2021 to 30 DEC 2021

SE-1, 02 DEC 2021 to 30 DEC 2021