

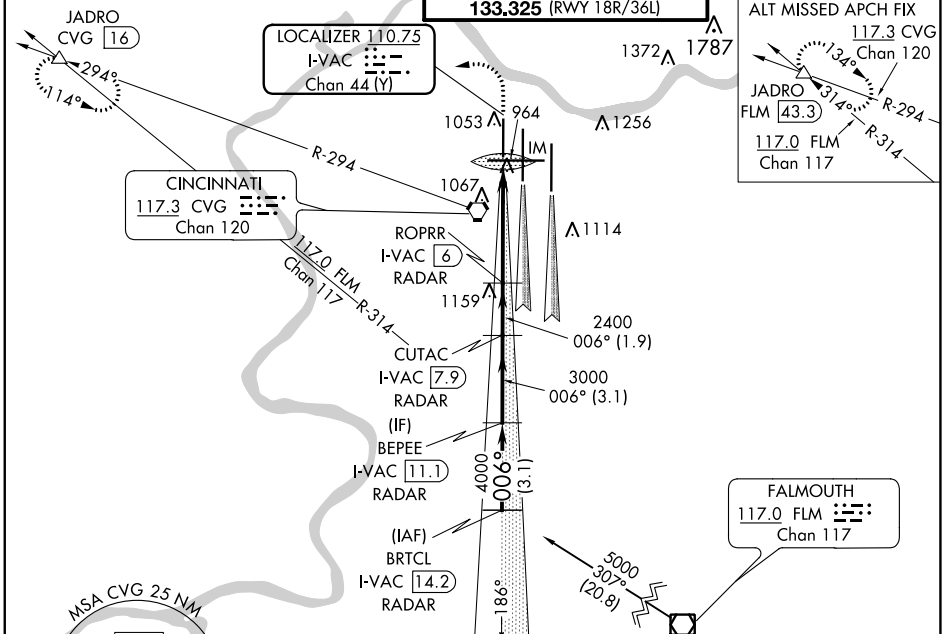
LOC/DME I-VAC 110.75 Chan 44 (Y)	APP CRS 006°	Rwy Idg TDZE Apt Elev 8000 873 896
--	------------------------	--

ILS RWY 36L (CAT II)

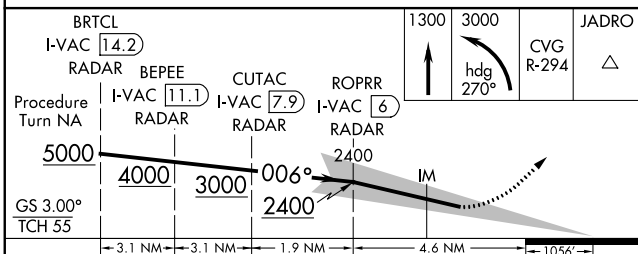
CINCINNATI/NORTHERN KENTUCKY INTL (CVG)

<p>▽ Simultaneous approach authorized with Rwy 36C and 36R. DME required.</p> <p>△ MISSED APPROACH: Climb to 1300 then climbing left turn to 3000 via heading 270° and CVG R-294 to JADRO/CVG 16 DME and hold.</p>	ALSIF-2
--	---------

D-ATIS ARR 134.375 DEP 135.3	CINCINNATI APP CON 119.7 363.15 (090°-269°) 123.875 363.15 (270°-089°)	CINCINNATI TOWER 118.975 360.85 (RWY 18L/36R) 118.3 (RWYS 18C/36C, 09/27) 133.325 (RWY 18R/36L)	GND CON 121.7	CLNC DEL 127.175
---	--	---	-------------------------	----------------------------



DME or RADAR REQUIRED



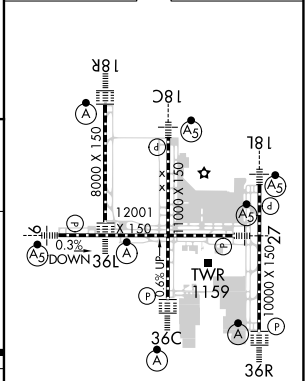
CATEGORY	S-ILS-36L	A	B	C	D
		RA 98/12 100 DA 973			

CATEGORY II ILS - SPECIAL AIRCREW & AIRCRAFT CERTIFICATION REQUIRED

ALT MISSED APCH FIX
117.3 CVG Chan 120
JADRO **FLM 43.3**
117.0 FLM Chan 117

FALMOUTH **117.0 FLM** Chan 117

ELEV 896	D	TDZE 873
----------	----------	----------



HIRL all Rwys
TDZ/CL all Rwys except 27

SE-1, 02 DEC 2021 to 30 DEC 2021

SE-1, 02 DEC 2021 to 30 DEC 2021