

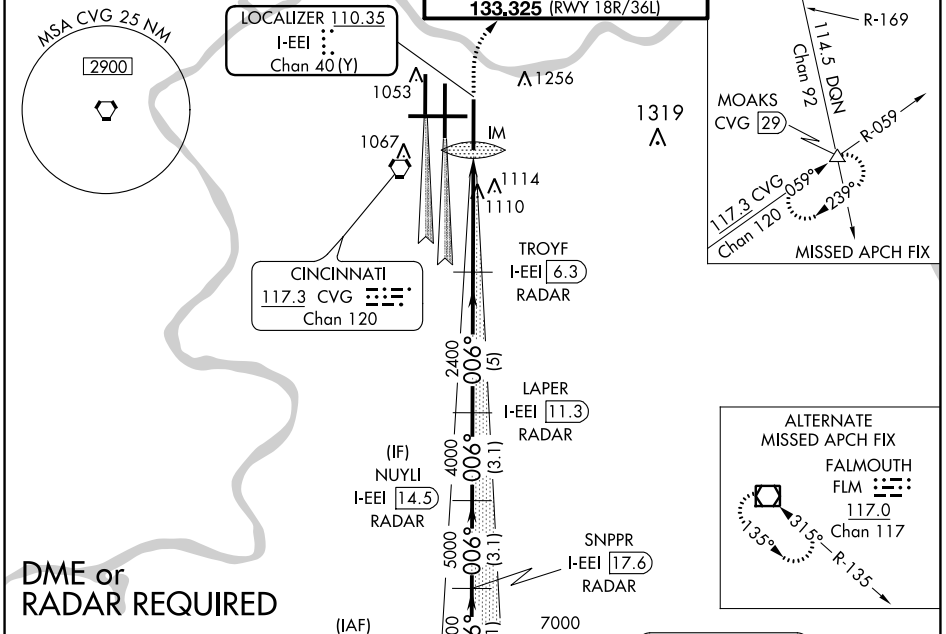
LOC/DME I-EEI 110.35 Chan 40 (Y)	APP CRS 006°	Rwy Idg 10000 TDZE 896 Apt Elev 896
---	------------------------	--

ILS RWY 36R (CAT II & III)

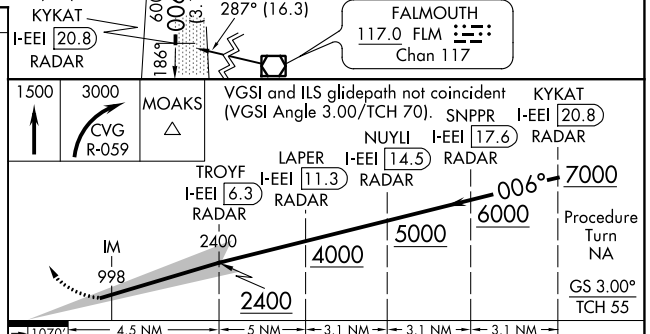
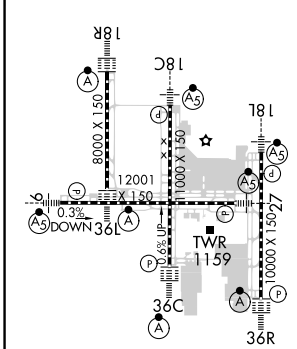
CINCINNATI/NORTHERN KENTUCKY INTL (CVG)

	ALSIF-2 	MISSED APPROACH: Climb to 1500 then climbing right turn to 3000 via CVG R-059 to MOAKS Int/CVG 29 DME and hold.

D-ATIS ARR 134.375 DEP 135.3	CINCINNATI APP CON 119.7 363.15 (090°-269°) 123.875 363.15 (270°-089°)	CINCINNATI TOWER 118.975 360.85 (RWY 18L/36R) 118.3 (RWYS 18C/36C, 09/27) 133.325 (RWY 18R/36L)	GND CON 121.7	CLNC DEL 127.175
---	--	---	-------------------------	----------------------------



ELEV 896	D	TDZE 896
----------	----------	----------



CATEGORY	A	B	C	D
S-ILS 36R	CAT II RA 98/12 100 DA 996			
S-ILS 36R	CAT IIIa RVR 07			
S-ILS 36R	CAT IIIb RVR 06			
S-ILS 36R	CAT IIIc NA			

CATEGORY II & III ILS - SPECIAL AIRCREW & AIRCRAFT CERTIFICATION REQUIRED

SE-1, 02 DEC 2021 to 30 DEC 2021

SE-1, 02 DEC 2021 to 30 DEC 2021