

LOC/DME I-VAC <b>110.75</b> Chan 44 (Y)	APP CRS <b>006°</b>	Rwy Idg 8000	TDZE 873	Apt Elev 896
---	------------------------	-----------------	-------------	-----------------

# ILS or LOC RWY 36L

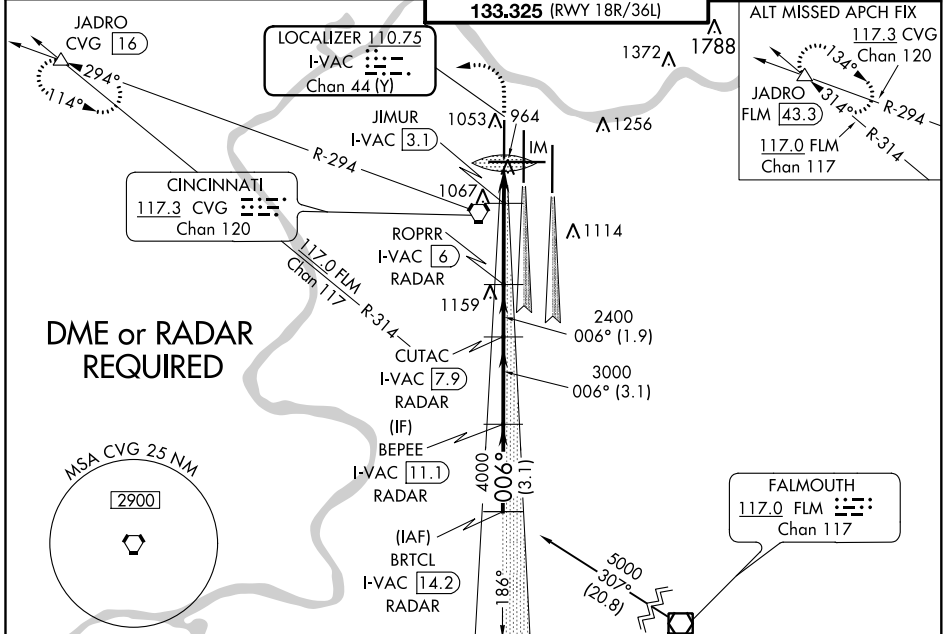
CINCINNATI/NORTHERN KENTUCKY INTL (CVG)

**Simultaneous approach authorized with Rwy 36C and 36R. DME required.**

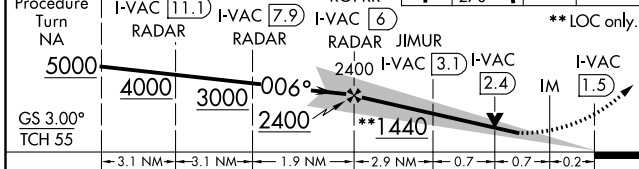
**ALSIF-2**

**MISSED APPROACH:** Climb to 3000 then climbing left turn to 3000 via heading 270° and CVG R-294 to JADRO/CVG 16 DME and hold.

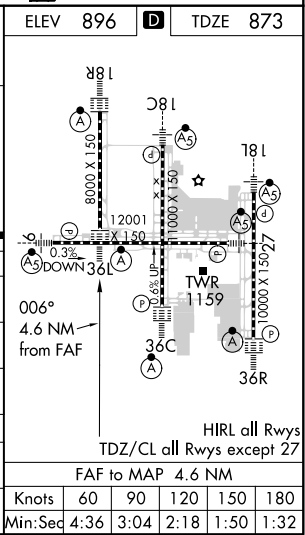
D-ATIS ARR <b>134.375</b> DEP <b>135.3</b>	CINCINNATI APP CON <b>119.7 363.15</b> (090°-269°) <b>123.875 363.15</b> (270°-089°)	CINCINNATI TOWER <b>118.975 360.85</b> (RWY 18L/36R) <b>118.3</b> (RWYS 18C/36C, 09/27) <b>133.325</b> (RWY 18R/36L)	GND CON <b>121.7</b>	CLNC DEL <b>127.175</b>
---	--	---	-------------------------	----------------------------



BRTCL I-VAC <b>14.2</b>	1300	3000	CVG R-294	JADRO	ELEV 896	TDZE 873
RADAR BEPEE	↑	hdg 270°		△		



CATEGORY	A	B	C	D
S-ILS 36L	1073/18 200 (200-½)			
S-LOC 36L	1440/24	567 (600-½)	1440/60	567 (600-1¼)
CIRCLING	1460-1	564 (600-1)	1560-1¾ 664 (700-1¾)	1560-2 664 (700-2)
JIMUR FIX MINIMUMS				
S-LOC 36L	1220/24	347 (400-½)	1220/30	347 (400-5/8)
CIRCLING	1460-1	564 (600-1)	1560-1¾ 664 (700-1¾)	1560-2 664 (700-2)



SE-1, 02 DEC 2021 to 30 DEC 2021

SE-1, 02 DEC 2021 to 30 DEC 2021