

LOC/DME I-URN 111.9 Chan 56	APP CRS 094°	Rwy Idg 12001 TDZE 883 Apt Elev 896
---	------------------------	--

ILS or LOC RWY 9

CINCINNATI/NORTHERN KENTUCKY INTL (CVG)

▲ For inoperative MALSR, increase S-LOC 9 Cat D visibility to RVR 5000. DME or radar required.



MISSED APPROACH: Climb to 2000 then climbing right turn to 3000 via heading 140° and CVG R-109 to CALIF INT/19 DME and hold.

D-ATIS ARR 134.375 DEP 135.3	CINCINNATI APP CON 119.7 363.15 (090°-269°) 123.875 363.15 (270°-089°)	CINCINNATI TOWER 118.975 360.85 (RWY 18L/36R) 118.3 (RWYS 18C/36C, 09/27) 133.325 (RWY 18R/36L)	GND CON 121.7	CLNC DEL 127.175
---	--	---	-------------------------	----------------------------

RADAR REQUIRED

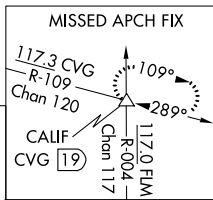
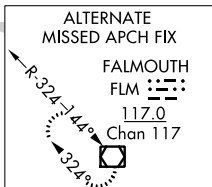
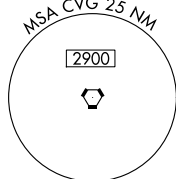
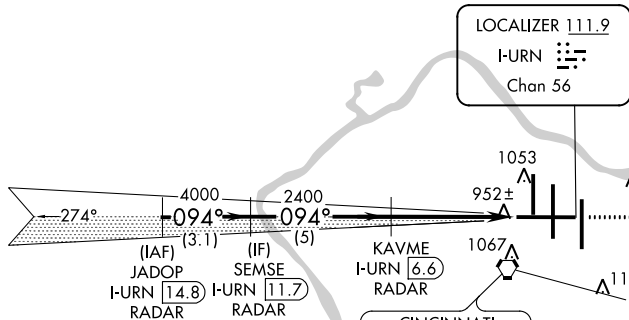
▲ 1848

▲ 1788

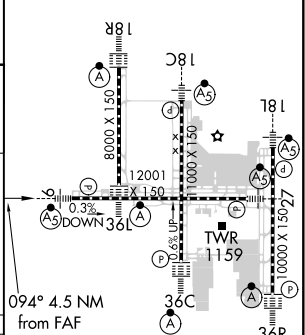
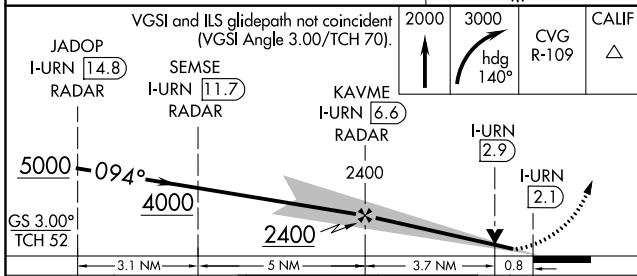
▲ 1372

▲ 1256

▲ 1114



ELEV 896	D	TDZE 883
----------	----------	----------



CATEGORY	A	B	C	D
S-ILS 9	1083/18		200 (200-½)	
S-LOC 9	1220/24		337 (400-½)	
			1220/40 337 (400-¾)	
CIRCLING	1460-1 564 (600-1)		1560-1¾ 664 (700-1¾)	
			1560-2 664 (700-2)	

HRL all Rwsy TDZ/CL all Rwsy except 27					
FAF to MAP 4.5 NM					
Knots	60	90	120	150	180
Min:Sec	4:30	3:00	2:15	1:48	1:30

ILS or LOC RWY 9

SE-1, 02 DEC 2021 to 30 DEC 2021

SE-1, 02 DEC 2021 to 30 DEC 2021