

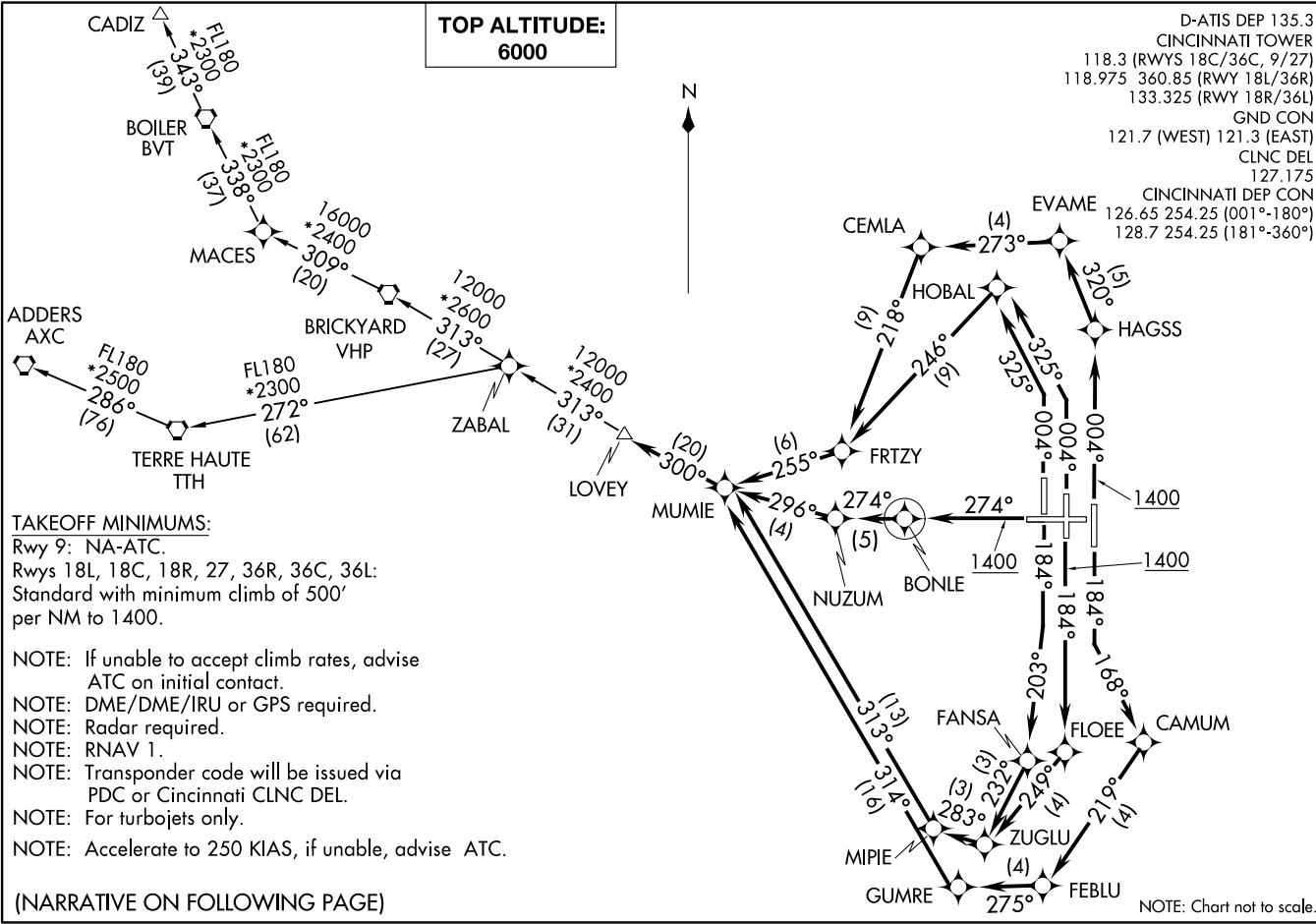
LOVEY SIX DEPARTURE (RNAV)
(LOVEY6.LOVEY) 10DECT15

CINCINNATI/NORTHERN KENTUCKY INTL (CVG)
COVINGTON, KENTUCKY

(LOVEY6.LOVEY) 19339
LOVEY SIX DEPARTURE (RNAV)

CINCINNATI/NORTHERN KENTUCKY INTL (CVG)
AL-655 (FAA)
COVINGTON, KENTUCKY

**TOP ALTITUDE:
6000**





DEPARTURE ROUTE DESCRIPTION

TAKEOFF RUNWAY 18L: Climb heading 184° to intercept course 168° to CAMUM, then on depicted route to MUMIE. . . .

TAKEOFF RUNWAY 18C: Climb heading 184° to 1400, then direct FLOEE, then on depicted route to MUMIE, thence. . . .

TAKEOFF RUNWAY 18R: Climb heading 184° to intercept course 203° to FANSA, then on depicted route to MUMIE, thence. . . .

TAKEOFF RUNWAY 27: Climb heading 274° to 1400, then direct BONLE, then on depicted route to MUMIE, thence. . . .

TAKEOFF RUNWAY 36R: Climb heading 004° to 1400, then direct HAGSS, then on depicted route to MUMIE, thence. . . .

TAKEOFF RUNWAY 36C: Climb heading 004° to intercept course 325° to HOBAL, then on depicted route to MUMIE, thence. . . .

TAKEOFF RUNWAY 36L: Climb heading 004° to intercept course 325° to HOBAL, then on depicted route to MUMIE, thence. . . .

. . . . on depicted route to LOVEY. Maintain 6000. Expect clearance to filed altitude within 10 minutes after departure.

ADDERS TRANSITION (LOVEY6.AXC):

CADIZ TRANSITION (LOVEY6.CADIZ):

SE-1, 02 DEC 2021 to 30 DEC 2021

SE-1, 02 DEC 2021 to 30 DEC 2021