

APP CRS	Rwy Idg	8000
184°	TDZE	868
	Apt Elev	896

RNAV (RNP) Z RWY 18R

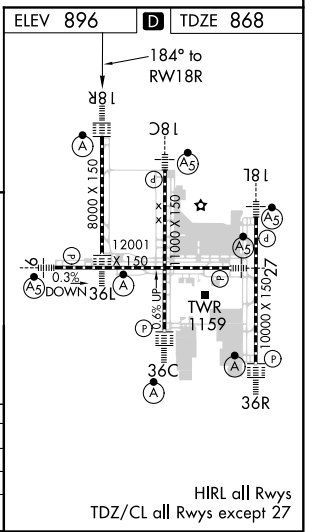
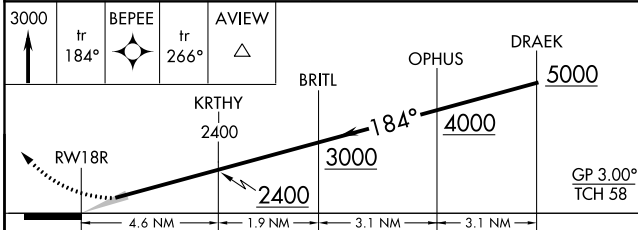
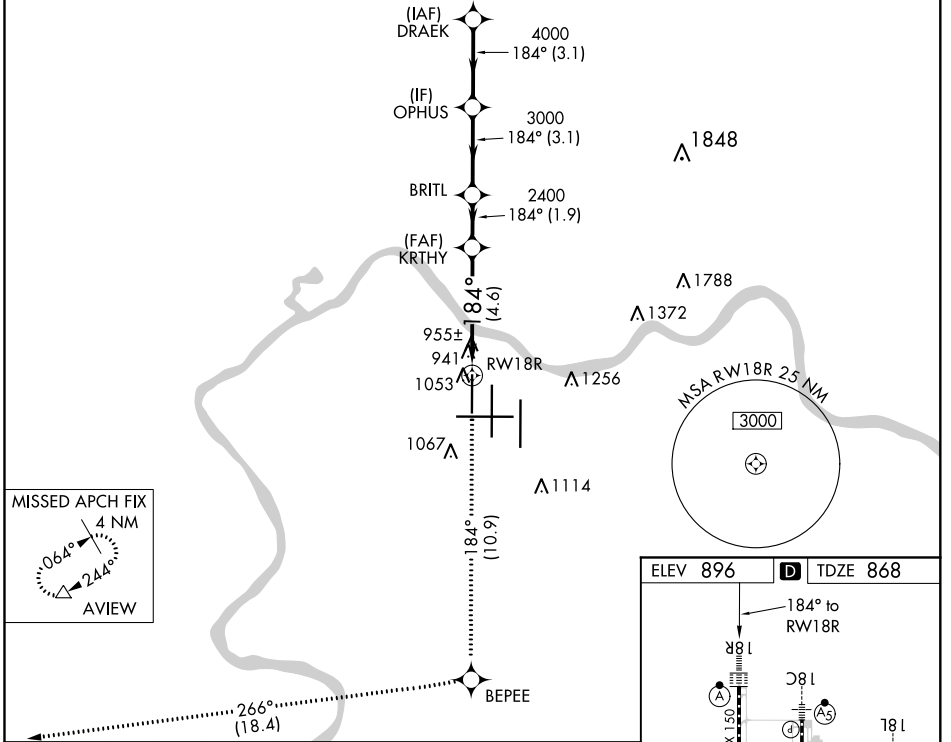
CINCINNATI/NORTHERN KENTUCKY INTL (CVG)

NA For inoperative ALSF, increase RNP 0.29 visibility to RVR 6000, RNP 0.30 visibility to 1½. For uncompensated Baro-VNAV systems, procedure NA below -16° C (4° F) or above 47° C (116° F). GPS required. Simultaneous approach authorized with Rwy 18C/L. Use of FD or AP providing RNAV track guidance required during simultaneous operations.

ALSF-2
MISSED APPROACH: Climb to 3000 via 184° track to BEPEE and via 266° track to AVIEW and hold.

D-ATIS	CINCINNATI APP CON	CINCINNATI TOWER	GND CON	CLNC DEL
ARR 134.375 DEP 135.3	119.7 363.15 (090°-269°) 123.875 363.15 (270°-089°)	118.975 360.85 (RWY 18L/36R) 118.3 (RWYS 18C/36C, 09/27) 133.325 (RWY 18R/36L)	121.7	127.175

RADAR REQUIRED



CATEGORY	A	B	C	D
RNP 0.29 DA		1243/40	375 (400-¾)	
RNP 0.30 DA		1281/50	413 (400-1)	

AUTHORIZATION REQUIRED

HIRL all Rwys
 TDZ/CL all Rwys except 27

SE-1, 02 DEC 2021 to 30 DEC 2021

SE-1, 02 DEC 2021 to 30 DEC 2021