

APP CRS	Rwy Idg	<b>8000</b>
<b>004°</b>	TDZE	<b>873</b>
	Apt Elev	<b>896</b>

# RNAV (RNP) Z RWY 36L

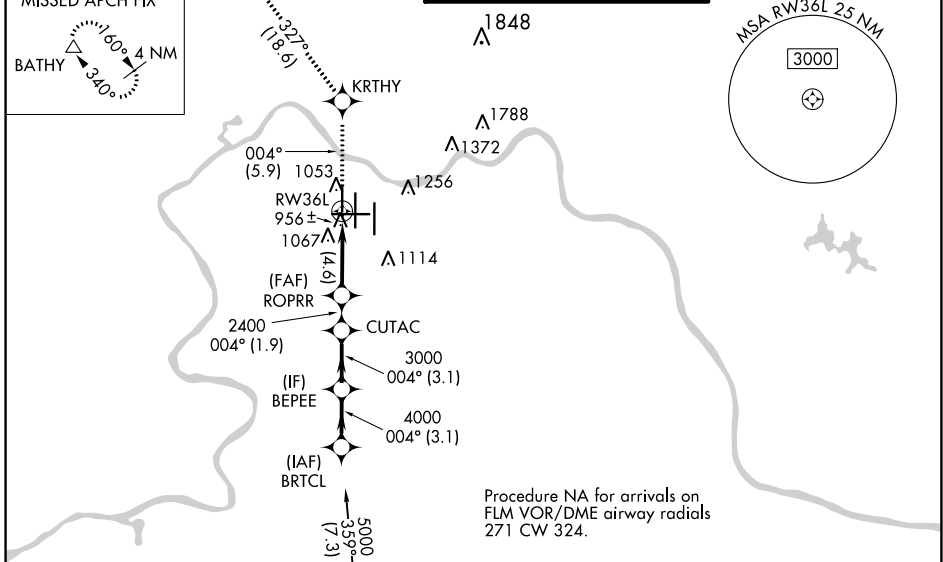
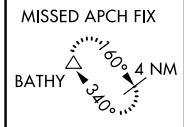
CINCINNATI/NORTHERN KENTUCKY INTL (CVG)

**NA** GPS Required. For uncompensated Baro-VNAV systems, procedure NA below -16°C (4°F) or above 47°C (116°F). For inoperative ALSF, increase RNP 0.29 and RNP 0.30 visibility to RVR 6000. Simultaneous approach authorized with Rwy 36C/R. Use of FD or AP providing RNAV track guidance required during simultaneous operations.

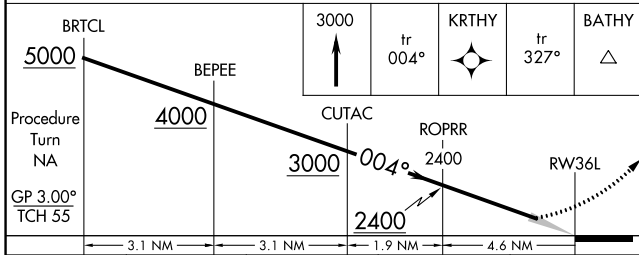
ALSF-2

MISSED APPROACH: Climb to 3000 via 004° track to KRTHY and via 327° track to BATHY and hold.

D-ATIS ARR <b>134.375</b> DEP <b>135.3</b>	CINCINNATI APP CON <b>119.7 363.15</b> (090°-269°) <b>123.875 363.15</b> (270°-089°)	CINCINNATI TOWER <b>118.975 360.85</b> (RWY 18L/36R) <b>118.3</b> (RWYS 18C/36C, 09/27) <b>133.325</b> (RWY 18R/36L)	GND CON <b>121.7</b>	CLNC DEL <b>127.175</b>
---	--	---	-------------------------	----------------------------

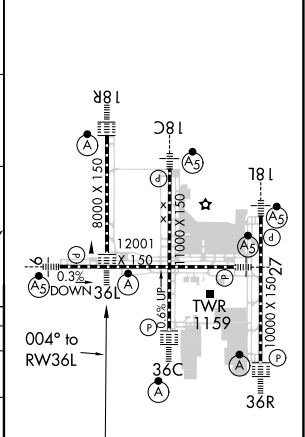


BRTCL	3000	tr 004°	KRTHY	tr 327°	BATHY
5000					



CATEGORY	A	B	C	D
RNP 0.29 DA		1261/40	388 (400-¾)	
RNP 0.30 DA		1264/50	391 (400-1)	

ELEV 896	<b>D</b> TDZE 873
----------	-------------------



HIRL all Rwys  
TDZ/CL all Rwys except 27

SE-1, 02 DEC 2021 to 30 DEC 2021

SE-1, 02 DEC 2021 to 30 DEC 2021

## AUTHORIZATION REQUIRED