

APP CRS	Rwy Idg	10000
004°	TDZE	896
	Apt Elev	896

RNAV (RNP) Z RWY 36R

CINCINNATI/NORTHERN KENTUCKY INTL (CVG)

⚠ GPS Required. For uncompensated Baro-VNAV systems, procedure NA below NA-16°C (4°F) or above 47°C (116°F). For inoperative ALSF, increase RNP 0.16 and RNP 0.20 visibility to RVR 6000, RNP 0.30 visibility to 1½. Simultaneous approach authorized with Rwy 36L/C. Use of FD or AP providing RNAV track guidance required during simultaneous operations.

ALSF-2
MISSED APPROACH: Climb to 3000 via 004° track to BAIRE and via 081° track to MOAKS and hold.

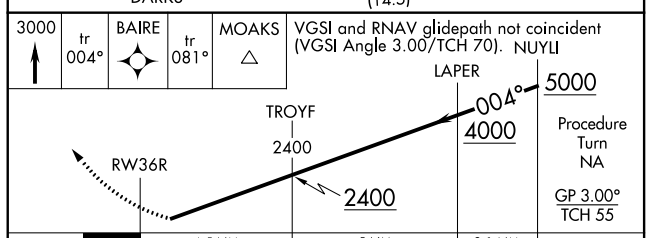
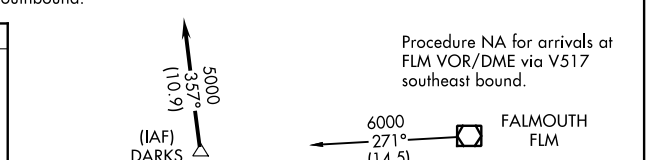
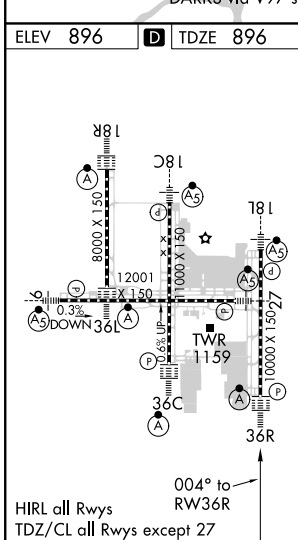
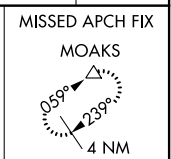
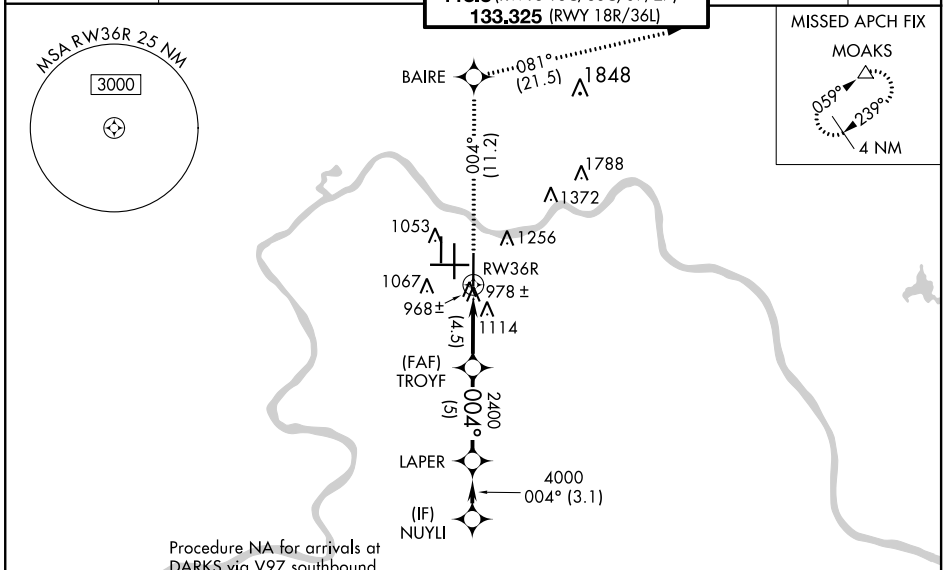
D-ATIS
 ARR **134.375** DEP **135.3**

CINCINNATI APP CON
119.7 363.15 (090°-269°)
123.875 363.15 (270°-089°)

CINCINNATI TOWER
118.975 360.85 (RWY 18L/36R)
118.3 (RWYS 18C/36C, 09/27)
133.325 (RWY 18R/36L)

GND CON
121.7

CLNC DEL
127.175



CATEGORY	A	B	C	D
RNP 0.16 DA		1284/40	388 (400-¾)	
RNP 0.20 DA		1295/50	399 (400-1)	
RNP 0.30 DA		1329/50	433 (500-1)	

AUTHORIZATION REQUIRED

SE-1, 02 DEC 2021 to 30 DEC 2021

SE-1, 02 DEC 2021 to 30 DEC 2021