


APP CRS <b>094°</b>	Rwy Idg <b>12001</b>
	TDZE <b>883</b>
	Apt Elev <b>896</b>

# RNAV (RNP) Z RWY 9

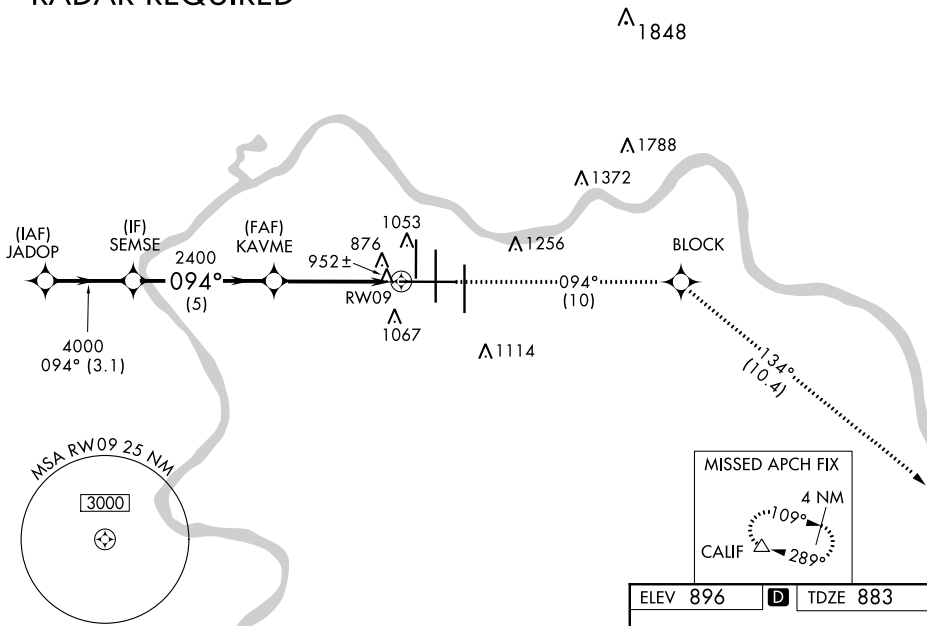
CINCINNATI/NORTHERN KENTUCKY INTL (CVG)

**GPS Required.** For uncompensated Baro-VNAV systems, procedure NA below -16° C (4° F) or above 47° C (116° F). For inoperative MALSR, increase RNP 0.18 visibility to RVR 5000, RNP 0.30 visibility to RVR 6000.

**MALSR**  
 MISSED APPROACH: Climb to 3000 via 094° track to BLOCK and via 134° track to CALIF and hold.

D-ATIS ARR <b>134.375</b> DEP <b>135.3</b>	CINCINNATI APP CON <b>119.7 363.15</b> (090°-269°) <b>123.875 363.15</b> (270°-089°)	CINCINNATI TOWER <b>118.975 360.85</b> (RWY 18L/36R) <b>118.3</b> (RWYS 18C/36C, 09/27) <b>133.325</b> (RWY 18R/36L)	GND CON <b>121.7</b>	CLNC DEL <b>127.175</b>
---	--	---	-------------------------	----------------------------

## RADAR REQUIRED

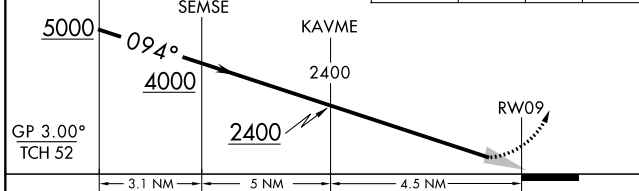


SE-1, 02 DEC 2021 to 30 DEC 2021

SE-1, 02 DEC 2021 to 30 DEC 2021

VGSI and RNAV glidepath not coincident (VGSI Angle 3.00/TCH 70).

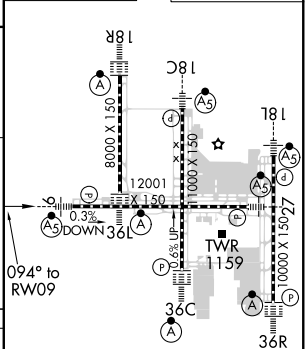
3000 ↑ tr 094°	BLOCK ✧ tr 134°	CALIF △
----------------------	-----------------------	------------



CATEGORY	A	B	C	D
RNP 0.18 DA		1 199/24	316 (400-½)	
RNP 0.30 DA		1 233/40	350 (400-¾)	

## AUTHORIZATION REQUIRED

ELEV 896 **D** TDZE 883



HIRL all Rwys  
TDZ/CL all Rwys except 27