

WAAS CH 40103 W18A	APP CRS 184°	Rwy Idg 10000 TDZE 889 Apt Elev 896
--	------------------------	--

RNAV (GPS) Y RWY 18L

CINCINNATI/NORTHERN KENTUCKY INTL (CVG)

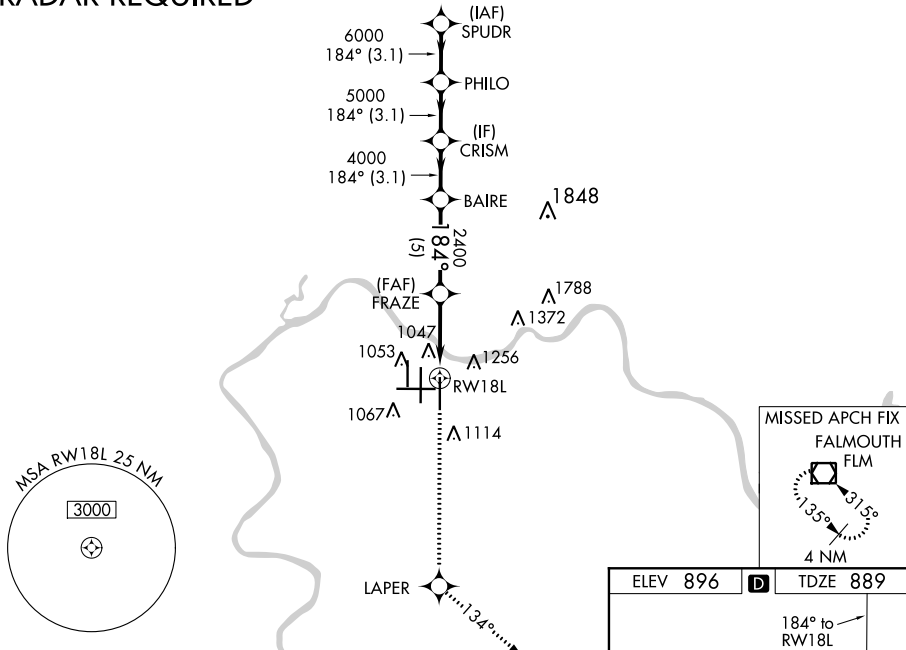
RNP APCH - GPS.

▼ For uncompensated Baro-VNAV systems, LNAV/VNAV NA below -16°C or above 54°C. Simultaneous approach authorized with Rwy 18C/R. LNAV procedure NA during simultaneous operations. Use of FD or AP providing RNAV track guidance required during simultaneous operations.

MALSRL MISSED APPROACH: Climb to 3000 direct LAPER and on 134° track to FLM VOR/DME and hold.

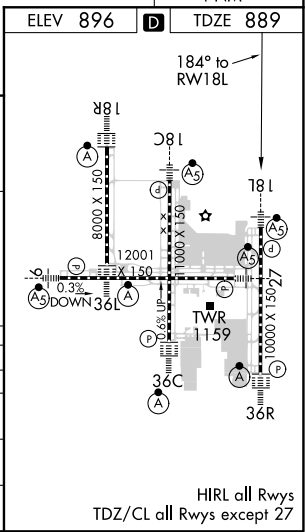
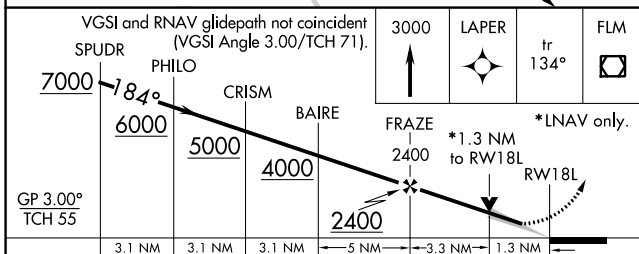
D-ATIS ARR 134.375 DEP 135.3	CINCINNATI APP CON 119.7 363.15 (090°-269°) 123.875 363.15 (270°-089°)	CINCINNATI TOWER 118.975 360.85 (RWY 18L/36R) 118.3 (RWYS 18C/36C, 09/27) 133.325 (RWY 18R/36L)	GND CON 121.7	CLNC DEL 127.175
---	--	---	-------------------------	----------------------------

RADAR REQUIRED



SE-1, 02 DEC 2021 to 30 DEC 2021

SE-1, 02 DEC 2021 to 30 DEC 2021



GP 3.00° TCH 55	3.1 NM	3.1 NM	3.1 NM	5 NM	3.3 NM	1.3 NM
CATEGORY	A		B		C	D
LPV DA			1089/18		200 (200-1/2)	
LNAV/VNAV DA			1395/60		506 (500-1/4)	
LNAV MDA	1360/24		471 (500-1/2)		1360/40 471 (500-3/4)	1360/50 471 (500-1)
CIRCLING	1460-1		564 (600-1)		1560-1 3/4 664 (700-1/4)	1560-2 664 (700-2)

HIRL all Rwy's
TDZ/CL all Rwy's except 27