

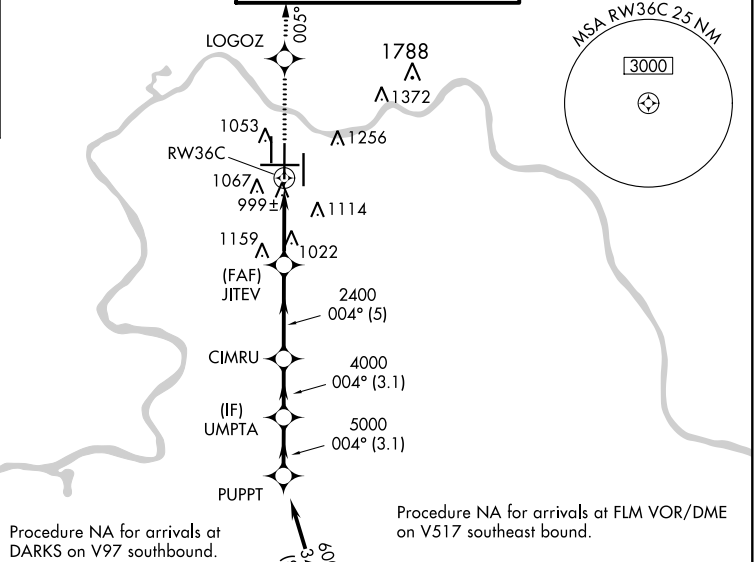
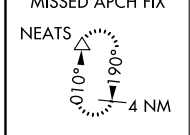
WAAS CH 97609 W36B	APP CRS 004°	Rwy Idg 11000 TDZE 851 Apt Elev 896
--	------------------------	--

RNAV (GPS) Y RWY 36C

CINCINNATI/NORTHERN KENTUCKY INTL (CVG)

RNP APCH - GPS.	ALSF-2	MISSED APPROACH: Climb to 3000 direct LOGOZ and on 005° track to NEATS and hold.
▼ For uncompensated Baro-VNAV systems, LNAV/VNAV NA below -16°C or above 54°C. Simultaneous approach authorized with Rwy 36L/R. LNAV procedure NA during simultaneous operations. Use of FD or AP providing RNAV track guidance required during simultaneous operations.		

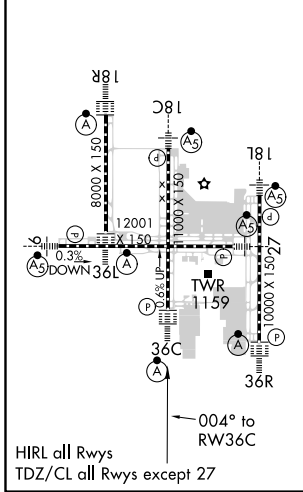
D-ATIS ARR 134.375 DEP 135.3	CINCINNATI APP CON 119.7 363.15 (090°-269°) 123.875 363.15 (270°-089°)	CINCINNATI TOWER 118.975 360.85 (RWY 18L/36R) 118.3 (RWYS 18C/36C, 09/27) 133.325 (RWY 18R/36L)	GND CON 121.7	CLNC DEL 127.175
---	--	---	-------------------------	----------------------------



Procedure NA for arrivals at DARKS on V97 southbound.

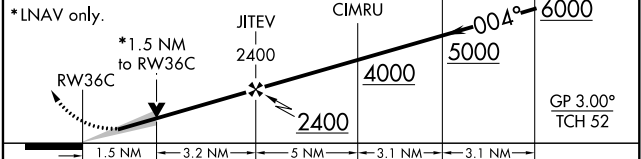
Procedure NA for arrivals at FLM VOR/DME on V517 southeast bound.

ELEV 896	D	TDZE 851
-----------------	----------	-----------------



HIRL all Rws
TDZ/CL all Rws except 27

3000	LOGOZ	tr 005°	NEATS	VGSI and RNAV glidepath not coincident (VGSI Angle 3.00/TCH 77).	Procedure Turn NA
------	-------	---------	-------	--	-------------------



CATEGORY	A	B	C	D
LPV DA		1051/18	200 (200-½)	
LNAV/VNAV DA		1347/60	496 (500-1¼)	
LNAV MDA	1400/24	549 (600-½)	1400/50 549 (600-1)	1400/60 549 (600-1¼)
CIRCLING	1460-1	564 (600-1)	1560-1¾ 664 (700-1¼)	1560-2 664 (700-2)

SE-1, 02 DEC 2021 to 30 DEC 2021

SE-1, 02 DEC 2021 to 30 DEC 2021