

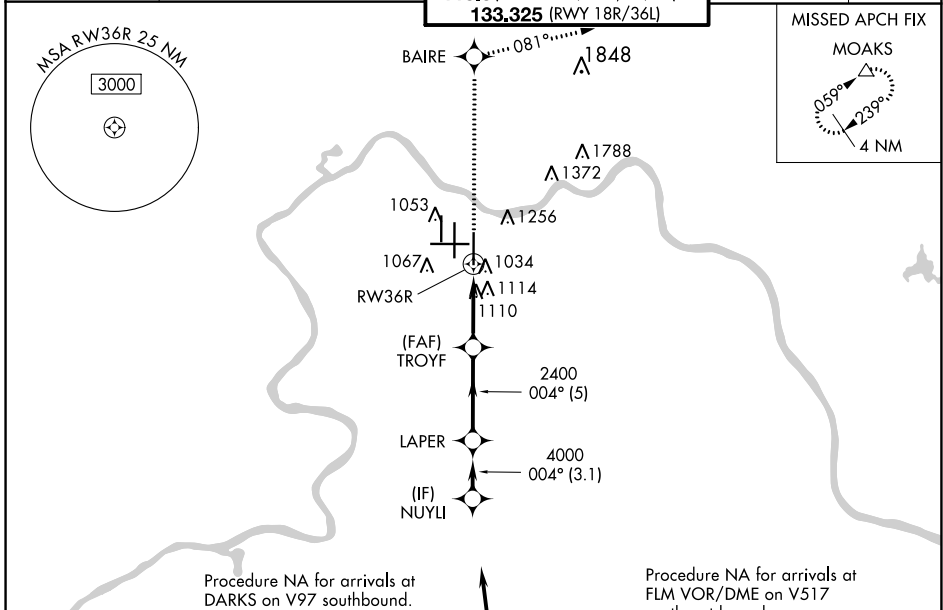
WAAS CH <b>42709</b> <b>W36D</b>	APP CRS <b>004°</b>	Rwy Idg <b>10000</b> TDZE <b>896</b> Apt Elev <b>896</b>
--	------------------------	--

# RNAV (GPS) Y RWY 36R

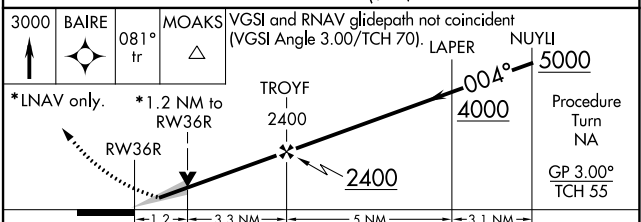
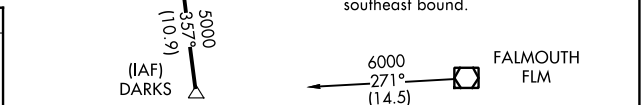
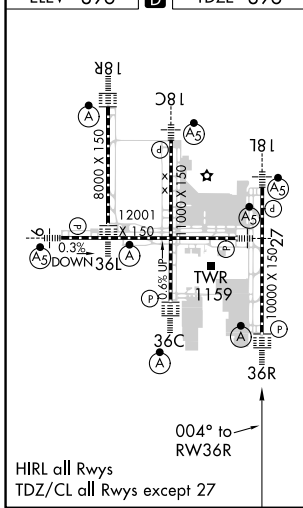
CINCINNATI/NORTHERN KENTUCKY INTL (CVG)

RNP APCH - GPS.	ALSZ-2 	MISSED APPROACH: Climb to 3000 direct to BAIRE and on 081° track to MOAKS and hold.
-----------------	------------	--

D-ATIS ARR <b>134.375</b> DEP <b>135.3</b>	CINCINNATI APP CON <b>119.7 363.15</b> (090°-269°)	CINCINNATI TOWER <b>118.975 360.85</b> (RWY 18L/36R) <b>118.3</b> (RWYS 18C/36C, 09/27) <b>133.325</b> (RWY 18R/36L)	GND CON <b>121.7</b>	CLNC DEL <b>127.175</b>
---	---	---	-------------------------	----------------------------



ELEV 896 **D** TDZE 896



CATEGORY	A	B	C	D
LPV DA	1096/18 200 (200-½)			
LNAV/VNAV DA	1340/50 444 (500-1)			
LNAV MDA	1360/24 464 (500-½)	1360/40 464 (500-¾)	1360/50 464 (500-1)	1360/50 464 (500-1)
CIRCLING	1460-1 564 (600-1)	1560-1¾ 664 (700-1¾)	1560-2 664 (700-2)	1560-2 664 (700-2)

SE-1, 02 DEC 2021 to 30 DEC 2021

SE-1, 02 DEC 2021 to 30 DEC 2021