

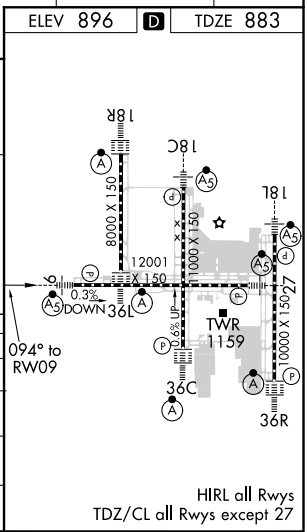
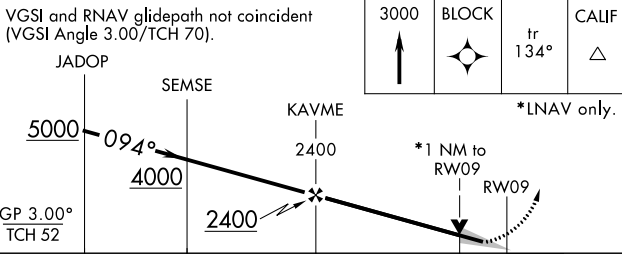
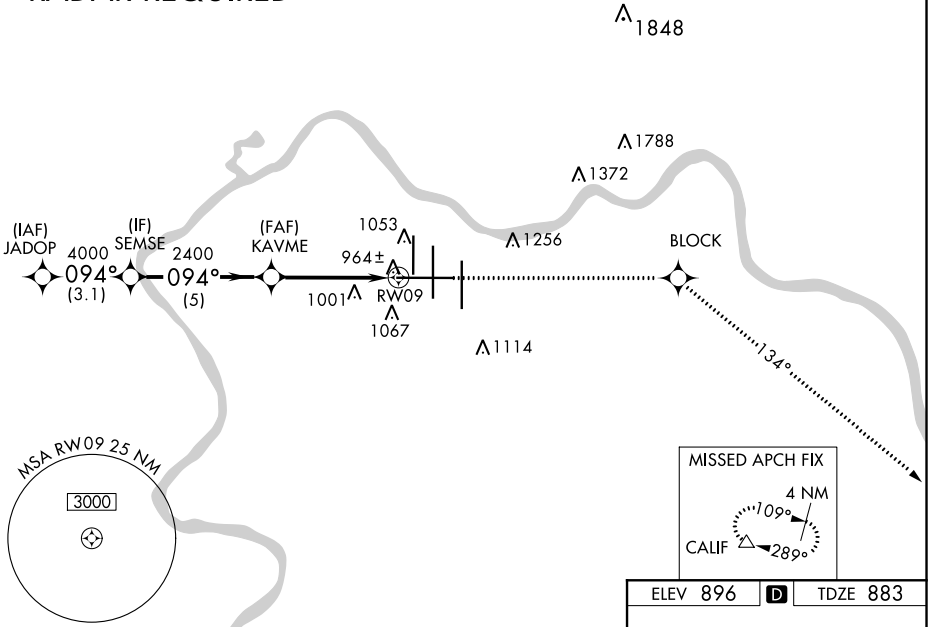
WAAS CH 65709 W09A	APP CRS 094°	Rwy Idg 12001 TDZE 883 Apt Elev 896
--	------------------------	--

RNAV (GPS) Y RWY 9

CINCINNATI/NORTHERN KENTUCKY INTL (CVG)

RNP APCH - GPS.		MALSRL	MISSED APPROACH: Climb to 3000 direct BLOCK and on 134° track to CALIF and hold.	
▼ For inoperative MALSRL, increase LNAV Cat D visibility to RVR 6000. For uncompensated Baro-VNAV systems, LNAV/VNAV NA below -16° C or above 54° C.				
D-ATIS ARR 134.375 DEP 135.3	CINCINNATI APP CON 119.7 363.15 (090°-269°) 123.875 363.15 (270°-089°)	CINCINNATI TOWER 118.975 360.85 (RWY 18L/36R) 118.3 (RWYS 18C/36C, 09/27) 133.325 (RWY 18R/36L)		GND CON 121.7
			CLNC DEL 127.175	

RADAR REQUIRED



CATEGORY	A	B	C	D
LPV DA		1083/18	200 (200-½)	
LNAV/VNAV DA		1297/50	414 (500-1)	
LNAV MDA	1260/24	377 (400-½)		1260/50 377 (400-1)
CIRCLING	1460-1	564 (600-1)	1560-1¾ 664 (700-1¾)	1560-2 664 (700-2)

SE-1, 02 DEC 2021 to 30 DEC 2021

SE-1, 02 DEC 2021 to 30 DEC 2021

HIRL all Rwy's
TDZ/CL all Rwy's except 27