

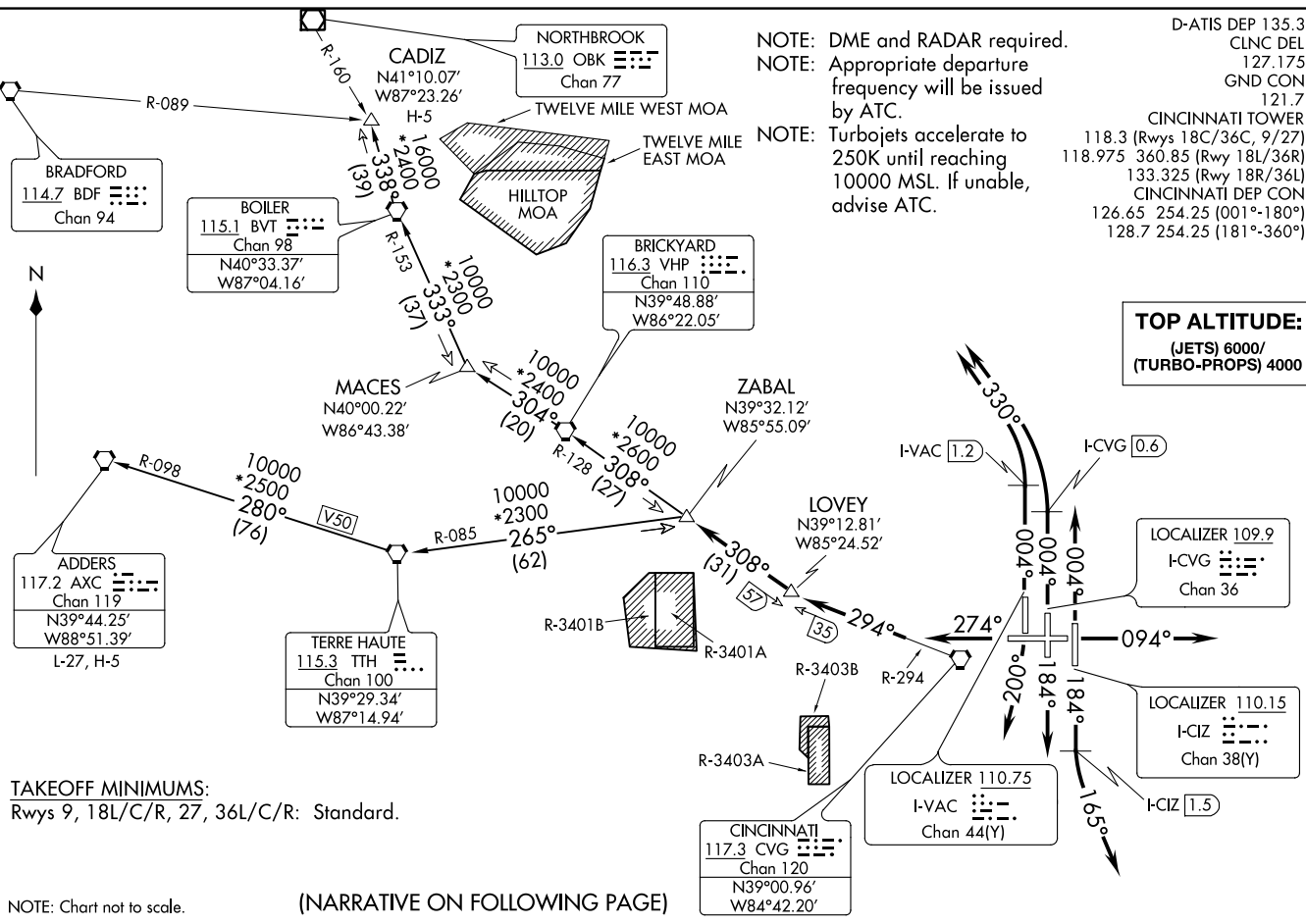
(WHWTR1 .ZABAL) 21168
WHITEWATER ONE DEPARTURE
 CINCINNATI/NORTHERN KENTUCKY INTL (CVG)
 AL-655 (FAA)
 COVINGTON, KENTUCKY

WHITEWATER ONE DEPARTURE
 (WHWTR1 .ZABAL) 17JUN21
 CINCINNATI/NORTHERN KENTUCKY INTL (CVG)
 COVINGTON, KENTUCKY

D-ATIS DEP 135.3
 CLNC DEL 127.175
 GND CON 121.7
 CINCINNATI TOWER 118.3 (Rwys 18C/36C, 9/27)
 118.975 360.85 (Rwy 18L/36R)
 133.325 (Rwy 18R/36L)
 CINCINNATI DEP CON 126.65 254.25 (001°-180°)
 128.7 254.25 (181°-360°)

NOTE: DME and RADAR required.
 NOTE: Appropriate departure frequency will be issued by ATC.
 NOTE: Turbojets accelerate to 250K until reaching 10000 MSL. If unable, advise ATC.

TOP ALTITUDE:
 (JETS) 6000/
 (TURBO-PROPS) 4000



TAKEOFF MINIMUMS:
 Rwys 9, 18L/C/R, 27, 36L/C/R: Standard.

(NARRATIVE ON FOLLOWING PAGE)

NOTE: Chart not to scale.



DEPARTURE ROUTE DESCRIPTION

TAKEOFF RUNWAY 9: Climb on heading 094° or as assigned by ATC, thence....

TAKEOFF RUNWAY 18L: Climb on heading 184° until 1.5 DME south of I-CIZ, then turn left heading 165°, thence....

TAKEOFF RUNWAY 18C: Climb on heading 184° or as assigned by ATC, thence....

TAKEOFF RUNWAY 18R: Climbing right turn heading 200°, thence....

TAKEOFF RUNWAY 27: Climb on heading 274° or as assigned by ATC, thence....

TAKEOFF RUNWAY 36L: Climb on heading 004° until 1.2 DME north of I-VAC, then turn left heading 330°, thence....

TAKEOFF RUNWAY 36C: Climb on heading 004° until 0.6 DME north of I-CVG, then turn left heading 330°, thence....

TAKEOFF RUNWAY 36R: Climb on heading 004° or as assigned by ATC, thence....

...expect RADAR vectors to CVG R-294, then on CVG R-294 to LOVEY/CVG 35 DME. Then on VHP R-128 to ZABAL/VHP 26.7 DME. Then on transition or assigned route. Turbojet aircraft maintain 6000, all other aircraft maintain 4000. Expect clearance to filed altitude within 10 minutes after departure.

ADDERS TRANSITION (WHWTR1.AXC): From over ZABAL on TTH R-085 to TTH VORTAC, then on TTH R-280 and AXC R-098 to AXC VORTAC.

CADIZ TRANSITION (WHWTR1.CADIZ): From over ZABAL on VHP R-128 to VHP VORTAC, then on VHP R-304 to MACES, then on BVT R-153 to BVT VORTAC, then on BVT R-338 to CADIZ.

SE-1, 02 DEC 2021 to 30 DEC 2021

SE-1, 02 DEC 2021 to 30 DEC 2021