

VORTAC OSH <b>116.75</b> Chan <b>114 (Y)</b>	APP CRS <b>360°</b>	Rwy Idg <b>8002</b> TDZE <b>808</b> Apt Elev <b>808</b>
--	------------------------	---

# VOR RWY 36

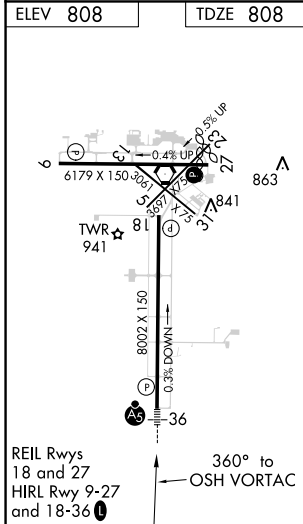
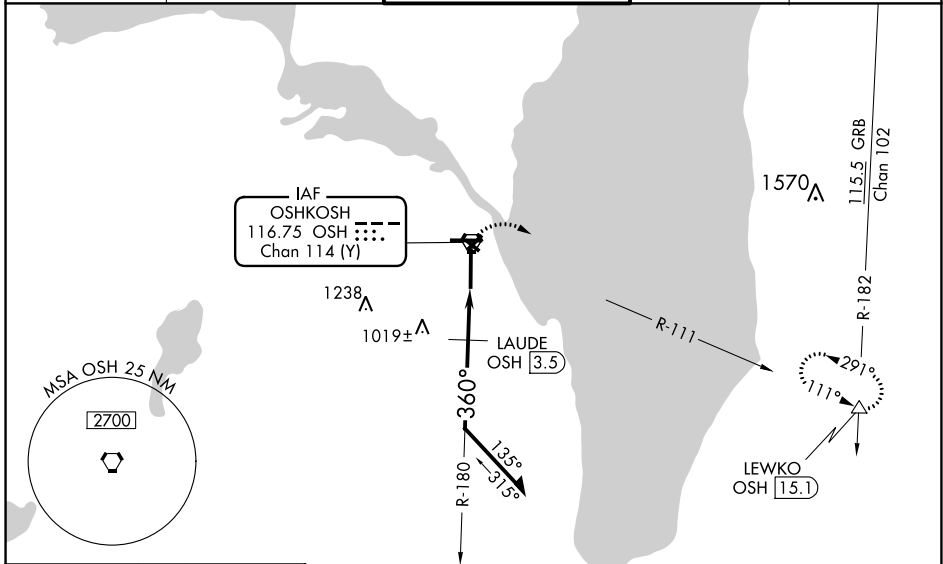
WITTMAN RGNL (OSH)

**⚠** Circling to Rwy 5, 23, and 31 NA at night. When local altimeter setting not received, use Fond Du Lac altimeter setting and increase all MDA 40 feet; increase Circling Cat C/D visibility and, Circling Cat C visibility 1/8 mile, increase Circling Cat D visibility 1/4 mile, LAUDE fix minimums increase S-36 Cats C/D visibility to RVR 5500 and Circling Cat D visibility to 2 1/4 mile. For inop MALSRL, when using Fond Du Lac altimeter setting, increase LAUDE fix minimums S-36 Cats C/D visibility to 1 3/8 mile. VDP NA with Fond Du Lac altimeter setting.

**MALSRL**

**MISSED APPROACH:**  
Climbing right turn to 3000 on OSH VORTAC R-111 to LEWKO INT/ OSH 15.1 DME and hold.

ATIS <b>125.9</b>	MILWAUKEE APP CON <b>127.0 263.075</b>	OSHKOSH TOWER ★ <b>118.5 (CTAF) 290.9</b>	GND CON <b>132.3</b>	UNICOM <b>122.95</b>
----------------------	---	--	-------------------------	-------------------------



ELEV 808	TDZE 808			
3000	LEWKO			
OSHKOSH R-111	OSHKOSH VORTAC			
*1500 when using Fond Du Lac altimeter setting.	LAUDE OSH 3.5			
OSHKOSH 2.9	OSHKOSH 2.9			
1.3 NM	0.6 NM			
1460	2300			
180°	360°			
Remain within 10 NM				
CATEGORY	A	B	C	D
S-36	1460/24	652 (700-1/2)	1460-1 3/8	652 (700-1 3/8)
<b>C</b> CIRCLING	1460-1	652 (700-1)	1460-1 7/8	1460-2
			652 (700-1 3/8)	652 (700-2)
LAUDE FIX MINIMUMS				
S-36	1280/24	472 (500-1/2)	1280/50	472 (500-1)
<b>C</b> CIRCLING	1280-1	1300-1	1360-1 1/2	1440-2
	472 (500-1)	492 (500-1)	552 (600-1 1/2)	632 (700-2)

EC-3, 02 DEC 2021 to 30 DEC 2021

EC-3, 02 DEC 2021 to 30 DEC 2021