

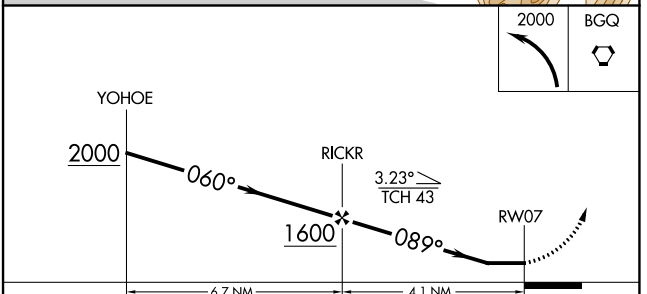
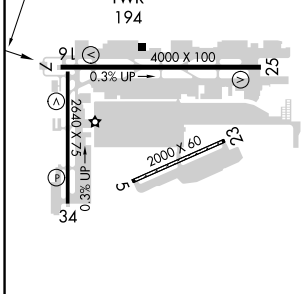
APP CRS 089°	Rwy Idg TDZE Apt Elev	N/A N/A 137
------------------------	-----------------------------	--------------------------

RNAV (GPS)-A

MERRILL FLD (MRI) (PAMR)

RNP APCH.			MISSED APPROACH: Climbing left turn to 2000 direct BGG VORTAC and hold.	
-----------	--	--	---	--

ATIS 124.25	ANCHORAGE APP CON 119.1 363.2	MERRILL TOWER * 126.0 (CTAF) 0	GND CON 121.7	UNICOM 122.95
-----------------------	---	--	-------------------------	-------------------------



REIL Rwy's 7, 16, 25, and 34	MIRL Rwy's 7-25 and 16-34			
CATEGORY	A	B	C	D
CIRCLING	740-1 603 (700-1)	800-1 663 (700-1)	920-2¼ 783 (800-2¼)	NA

AK, 02 DEC 2021 to 27 JAN 2022

AK, 02 DEC 2021 to 27 JAN 2022