

(KAYLN2.KAYLN) 19227

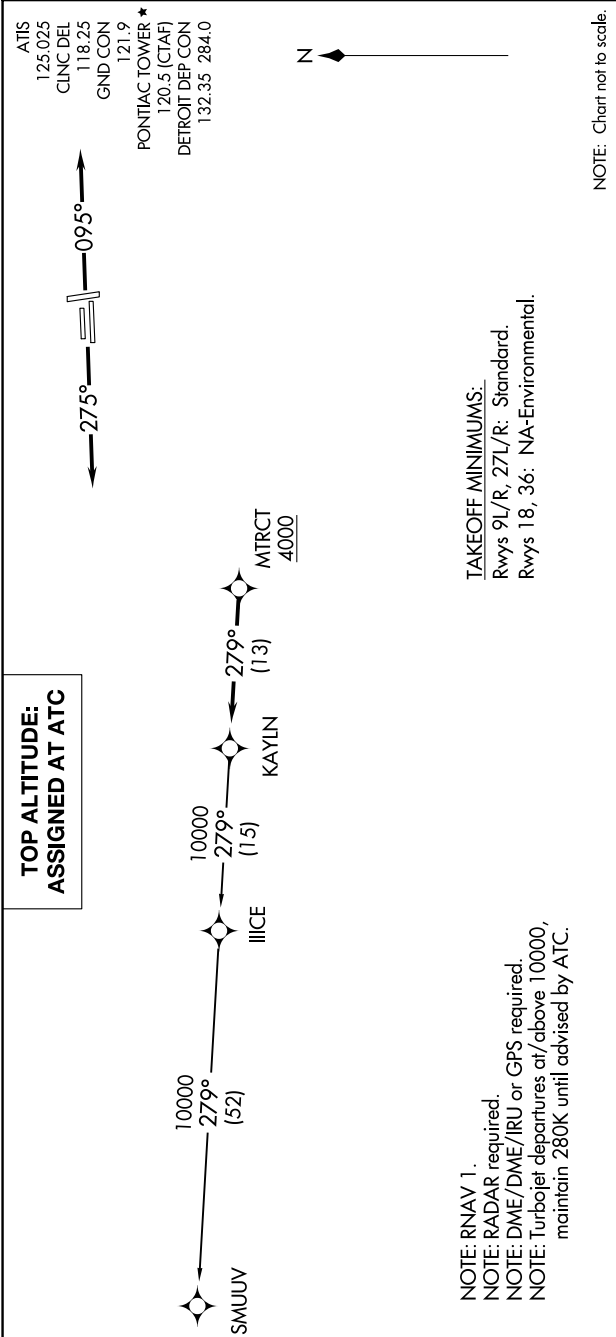
# KAYLN TWO DEPARTURE (RNAV)

AL-5052 (FAA)

OAKLAND COUNTY INTL (PTK)

PONTIAC, MICHIGAN

EC-1, 02 DEC 2021 to 30 DEC 2021



## DEPARTURE ROUTE DESCRIPTION

TAKEOFF RUNWAYS 9L/R: Climb on heading 095° or as assigned for RADAR vectors to cross MTRCT at or above 4000, thence....

TAKEOFF RUNWAYS 27L/R: Climb on heading 275° or as assigned for RADAR vectors to cross MTRCT at or above 4000, thence....

....on track 279° to KAYLN, then on (transition). Maintain ATC assigned altitude, expect filed altitude 10 minutes after departure.

SMUUV TRANSITION (KAYLN2.SMUUV):

# KAYLN TWO DEPARTURE (RNAV)

(KAYLN2.KAYLN) 15AUG19

PONTIAC, MICHIGAN  
OAKLAND COUNTY INTL (PTK)

EC-1, 02 DEC 2021 to 30 DEC 2021