

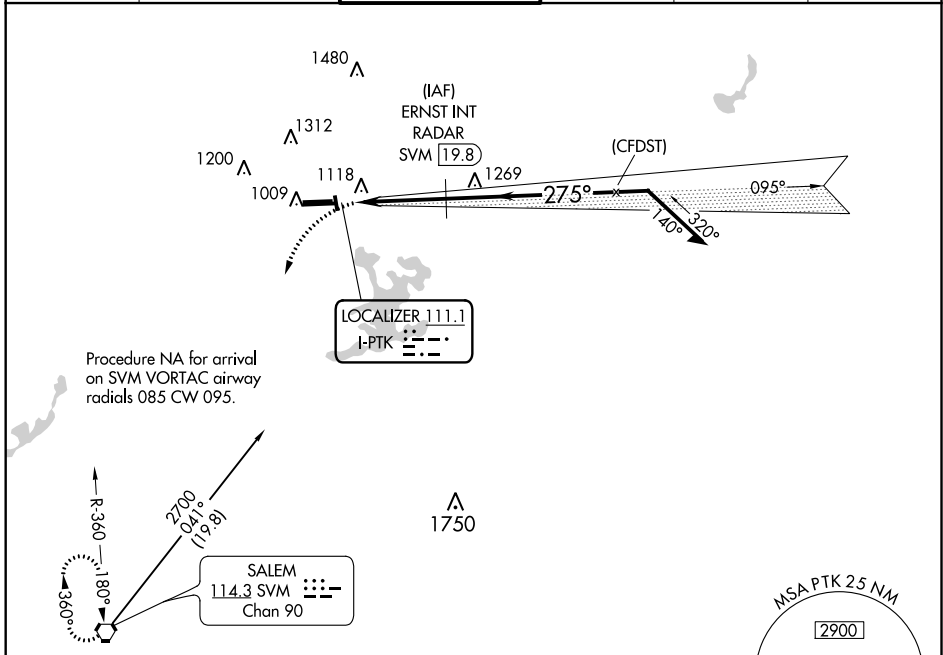
LOC I-PTK <b>111.1</b>	APP CRS <b>275°</b>	Rwy Idg 6520
		TDZE 974
		Apt Elev 981

**LOC BC RWY 27L**  
OAKLAND COUNTY INTL (PTK)

**⚠** Circling Rwy 9L, 36 NA at night. When local altimeter setting not received, use Coleman A Young Muni altimeter setting and increase all MDA 120 feet, increase S-27L Cat C/D visibility 3/8 SM and Circling Cat C/D visibility 1/2 SM.

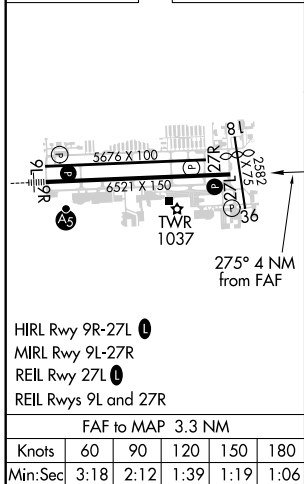
**⚠** MISSED APPROACH: Climbing left turn to 3000 direct SVM VORTAC and hold.

ATIS <b>125.025</b>	DETROIT APP CON <b>132.35 284.0</b>	PONTIAC TOWER * <b>120.5 (CTAF) 0</b>	GND CON <b>121.9</b>	CLNC DEL <b>118.25</b>	UNICOM <b>122.95</b>
------------------------	--	--	-------------------------	---------------------------	-------------------------



ELEV 981	<b>D</b>	TDZE 974
----------	----------	----------

**BACK COURSE**



3000	SVM	ERNST INT RADAR			
		Remain within 10 NM			
		I-PTK	2300	2500	
		≤ 3.00°	TCH 42	Disregard GS indications.	
		0.7	3.3 NM		
CATEGORY	A	B	C	D	
S-LOC 27L	1 440-1	466 (500-1)	1 440-1 3/8	466 (500-1 3/8)	
<b>C</b> CIRCLING	1 500-1	1 540-1	1 640-1 3/4	1 640-2	
	519 (600-1)	559 (600-1)	659 (700-1 3/4)	659 (700-2)	

EC-1, 02 DEC 2021 to 30 DEC 2021

EC-1, 02 DEC 2021 to 30 DEC 2021