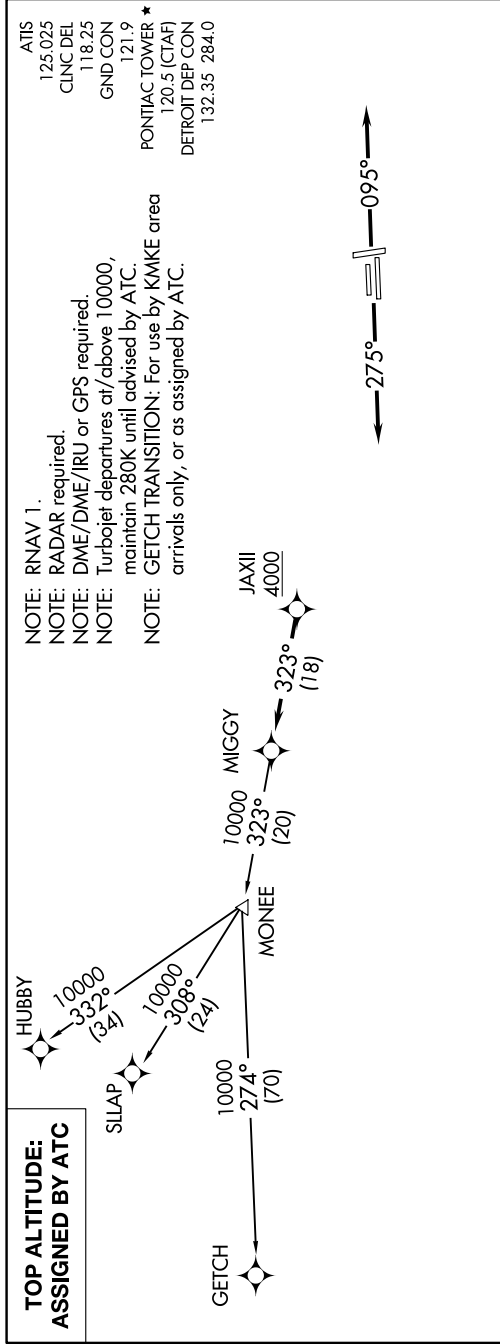


EC-1, 02 DEC 2021 to 30 DEC 2021



- NOTE: RNAV 1.
- NOTE: RADAR required.
- NOTE: DME/DME/IRU or GPS required.
- NOTE: Turbojet departures at/above 10000, maintain 280K until advised by ATC.
- NOTE: GETCH TRANSITION: For use by KMKC area arrivals only, or as assigned by ATC.

- ATIS 125.025
- CINC DEL 118.25
- GND CON 121.9
- PONTIAC TOWER * 120.5 (CTAF)
- DETROIT DEP CON 132.35 284.0

TAKEOFF MINIMUMS:
 Rwys 9L/R, 27L/R: Standard
 Rwys 18, 36: NA-Environmental.

NOTE: Chart not to scale.

DEPARTURE ROUTE DESCRIPTION

TAKEOFF RUNWAYS 9L/R: Climb on heading 095° or as assigned for RADAR vectors to cross JAXII at or above 4000, thence....
 TAKEOFF RUNWAYS 27L/R: Climb on heading 275° or as assigned for RADAR vectors to cross JAXII at or above 4000, thence....
on track 323° to MIGGY, then on (transition). Maintain ATC assigned altitude, expect filed altitude 10 minutes after departure.

GETCH TRANSITION (MIGGY2.GETCH):
HUBBY TRANSITION (MIGGY2.HUBBY):
SILAP TRANSITION (MIGGY2.SILAP):

EC-1, 02 DEC 2021 to 30 DEC 2021