

| | | |
|--|------------------------|---|
| WAAS CH 90415 W09A | APP CRS 095° | Rwy Idg 6520 TDZE 981 Apt Elev 981 |
|--|------------------------|---|

RNAV (GPS) RWY 9R

OAKLAND COUNTY INTL (PTK)

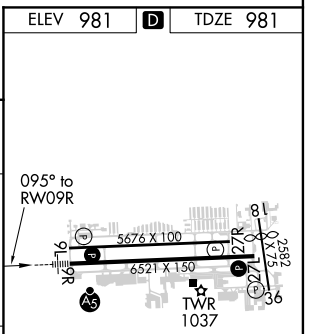
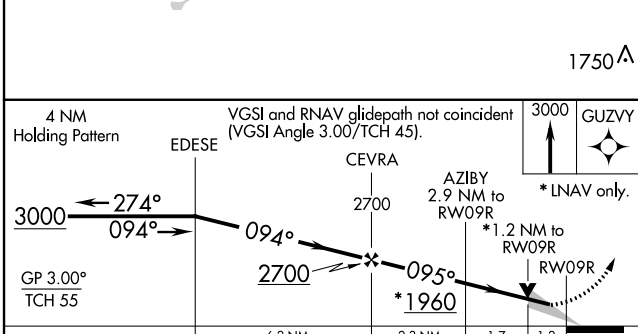
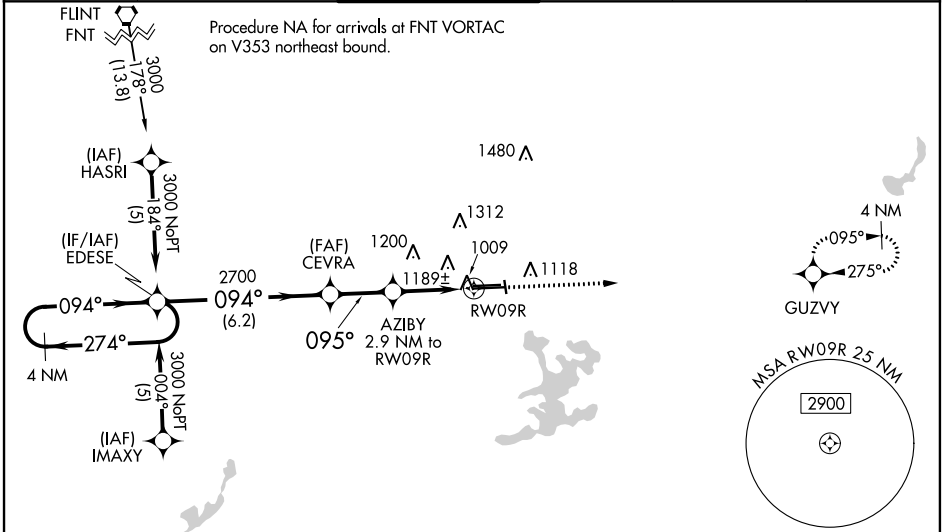
RNP APCH.

▼ For uncompensated Baro-VNAV systems, LNAV/VNAV NA below -16°C (4°F) or above 47°C (111°F). Baro-VNAV and VDP NA when using Coleman A Young altimeter setting. Circling Rwy 9L, 36 NA at night. When local altimeter setting not received, use Coleman A Young Muni altimeter setting and increase LPV DA to 1286 feet, LNAV/VNAV DA to 1685 feet and all MDA 120 feet, increase LNAV/VNAV all Cats visibility to 2 SM, increase LNAV Cat C visibility to RVR 5000, Cat D visibility to RVR 6000, and Circling Cat C/D visibility ½ SM. For inop MALSRL increase LNAV Cats A/B visibility to RVR 5000. For inop MALSRL when using Coleman A Young Muni altimeter setting; increase LPV all Cats, and LNAV Cats A/B visibility to RVR 5000. # RVR 1800 authorized with use of FD or AP or HUD to DA, NA when using Coleman A Young Muni altimeter setting.

MALSRL

MISSED APPROACH:
Climb to 3000 direct
GUZVY and hold.

| | | | | | |
|------------------------|--|--|-------------------------|---------------------------|-------------------------|
| ATIS 125.025 | DETROIT APP CON 132.35 284.0 | PONTIAC TOWER * 120.5 (CTAF) | GND CON 121.9 | CLNC DEL 118.25 | UNICOM 122.95 |
|------------------------|--|--|-------------------------|---------------------------|-------------------------|



| CATEGORY | A | B | C | D |
|--------------|-----------------------|-----------------------|-------------------------|------------------------|
| LPV DA | | 1181/24 | 200 (200-½) | |
| LNAV/VNAV DA | | 1580-1½ | 599 (600-1½) | |
| LNAV MDA | 1420/40 | 439 (500-¾) | | 1420/50 439 (500-1) |
| CIRCLING | 1500-1 519 (600-1) | 1540-1 559 (600-1) | 1640-1¾ 659 (700-1¾) | 1640-2 659 (700-2) |

HIRL Rwy 9R-27L

MIRL Rwy 9L-27R

REIL Rwy 27L

REIL Rws 9L and 27R

EC-1, 02 DEC 2021 to 30 DEC 2021

EC-1, 02 DEC 2021 to 30 DEC 2021