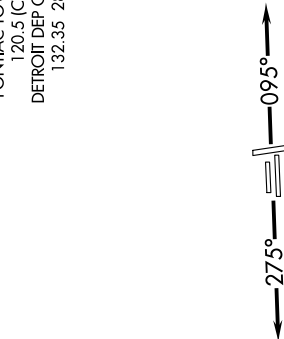


**TOP ALTITUDE:
ASSIGNED BY ATC**

ATIS 125.025
CLINC DEL 118.25
GND CON 121.9
PONTIAC TOWER ★ 120.5 (CTAF)
DETROIT DEP CON 132.35 284.0

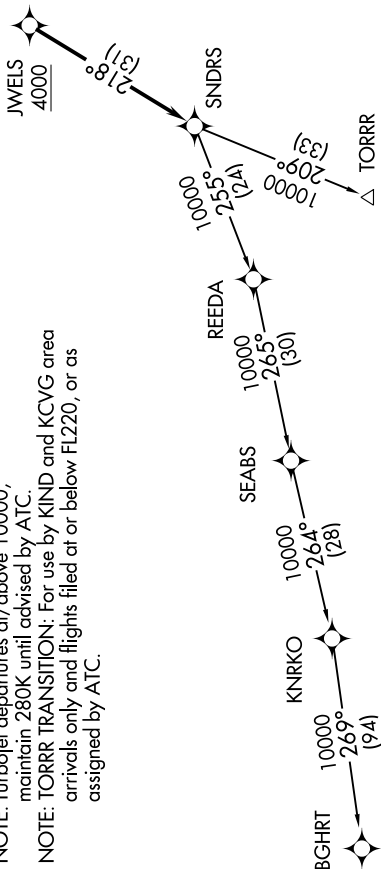


DEPARTURE ROUTE DESCRIPTION

TAKEOFF RUNWAYS 9L/R: Climb on heading 095° or as assigned for RADAR vectors to cross JWELS at or above 4000, thence....
TAKEOFF RUNWAYS 27L/R: Climb on heading 275° or as assigned for RADAR vectors to cross JWELS at or above 4000, thence....
....on track 218° to SNDRS, then on (transition). Maintain ATC assigned altitude, expect filed altitude 10 minutes after departure.

BGHRT TRANSITION (SNDRS2.BGHRT):
TORRR TRANSITION (SNDRS2.TORRR):

NOTE: RNAV 1.
NOTE: RADAR required.
NOTE: DME/DME/IRU or GPS required.
NOTE: Turbojet departures at/above 10000, maintain 280K until advised by ATC.
NOTE: TORRR TRANSITION: For use by KIND and KCVG area arrivals only and flights filed at or below FL220, or as assigned by ATC.



TAKEOFF MINIMUMS:
Rwys 9L/R, 27L/R: Standard.
Rwys 18, 36: NA-Environmental.

NOTE: Chart not to scale.