

(ZETTR3.ZETTR) 19339

# ZETTR THREE DEPARTURE (RNAV)

AL-5052 (FAA)

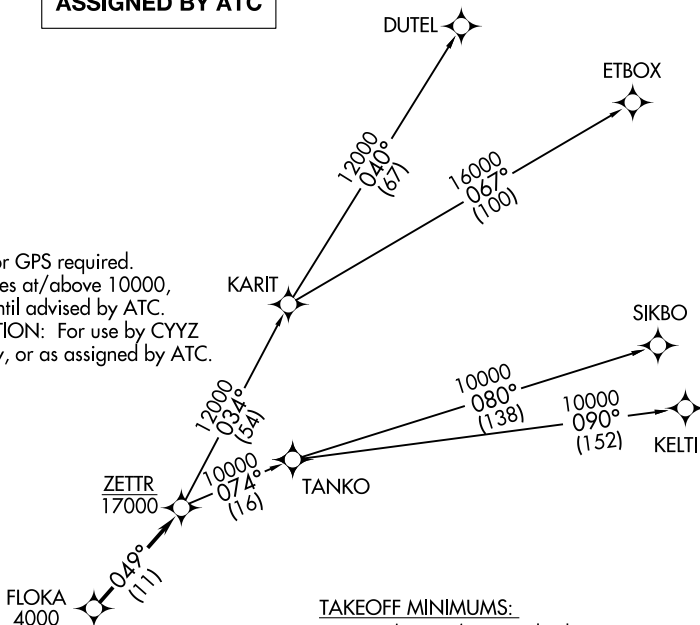
OAKLAND COUNTY INTL (PTK)

PONTIAC, MICHIGAN

ATIS  
 125.025  
 CLNC DEL  
 118.25  
 GND CON  
 121.9  
 PONTIAC TOWER★  
 120.5 (CTAF)  
 DETROIT DEP CON  
 132.35 284.0

**TOP ALTITUDE:  
 ASSIGNED BY ATC**

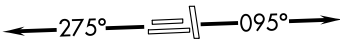
NOTE: RNAV 1.  
 NOTE: RADAR required.  
 NOTE: DME/DME/IRU or GPS required.  
 NOTE: Turbojet departures at/above 10000,  
 maintain 280K until advised by ATC.  
 NOTE: TANKO TRANSITION: For use by CYYZ  
 area arrivals only, or as assigned by ATC.



TAKEOFF MINIMUMS:  
 Rwys 9L/R, 27L/R: Standard.  
 Rwys 18, 36: NA-Environmental.

EC-1, 02 DEC 2021 to 30 DEC 2021

EC-1, 02 DEC 2021 to 30 DEC 2021



## ▼ DEPARTURE ROUTE DESCRIPTION

**TAKEOFF RUNWAYS 9L/R:** Climb on heading 095° or as assigned for RADAR vectors to cross FLOKA at or above 4000, thence....  
**TAKEOFF RUNWAYS 27L/R:** Climb on heading 275° or as assigned for RADAR vectors to cross FLOKA at or above 4000, thence....

....on track 049° to cross ZETTR at or below 17000, then on (transition). Maintain ATC assigned altitude, expect filed altitude 10 minutes after departure.

- DUTEL TRANSITION (ZETTR3.DUTEL):
- ETBOX TRANSITION (ZETTR3.ETBOX):
- KELTI TRANSITION (ZETTR3.KELTI):
- SIKBO TRANSITION (ZETTR3.SIKBO):
- TANKO TRANSITION (ZETTR3.TANKO):

NOTE: Chart not to scale.

**ZETTR THREE DEPARTURE (RNAV)**  
 (ZETTR3.ZETTR) 05DEC19

PONTIAC, MICHIGAN  
 OAKLAND COUNTY INTL (PTK)