

APP CRS	Rwy Idg	3508
139°	TDZE	869
	Apt Elev	869

RNAV (GPS) RWY 14

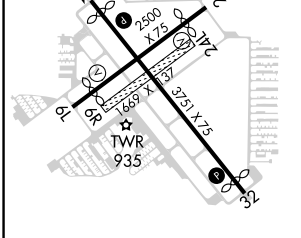
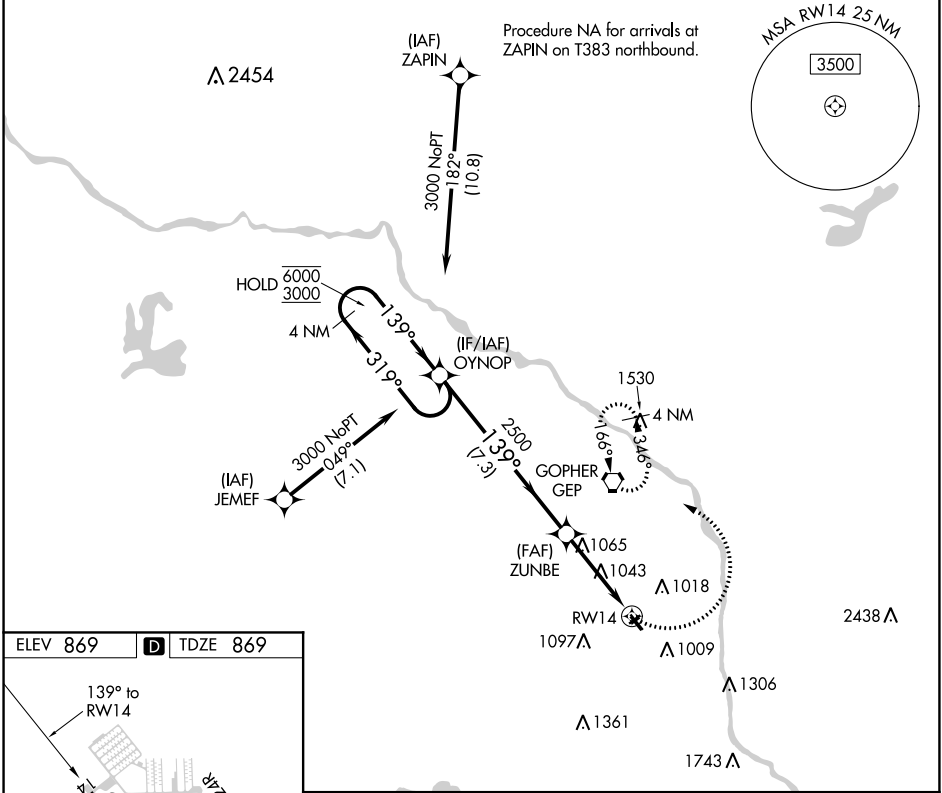
CRYSTAL (MIC)

RNP APCH.

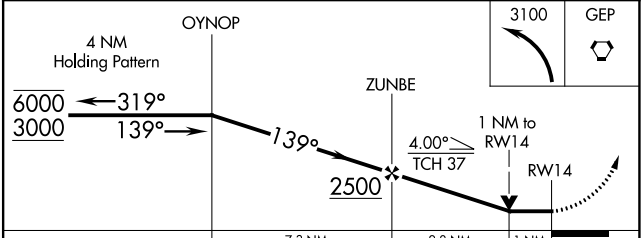
∇ Circling NA to Rwy 6R and 24L.
▲ Rwy 14 helicopter visibility reduction below 3/4 SM NA.

MISSED APPROACH: Climbing left turn to 3100 direct GEP VORTAC and hold, continue climb-in-hold to 3100.

ATIS 124.475	MINNEAPOLIS APP CON 126.5 335.65	CRYSTAL TOWER * 120.7 (CTAF) 0	GND CON 121.6	CLNC DEL 121.6	CLNC DEL 121.6 (When twr closed)	UNICOM 122.95
------------------------	--	--	-------------------------	--------------------------	---	-------------------------



ELEV 869	D TDZE 869
REIL Rwy 14 and 32 0	
MIRL Rwy 6L-24R and 14-32 0	



CATEGORY	A	B	C	D
LNAV MDA	1320-1	451 (500-1)	NA	
C CIRCLING	1340-1	1360-1	NA	
	471 (500-1)	491 (500-1)		

NC-1, 02 DEC 2021 to 30 DEC 2021

NC-1, 02 DEC 2021 to 30 DEC 2021