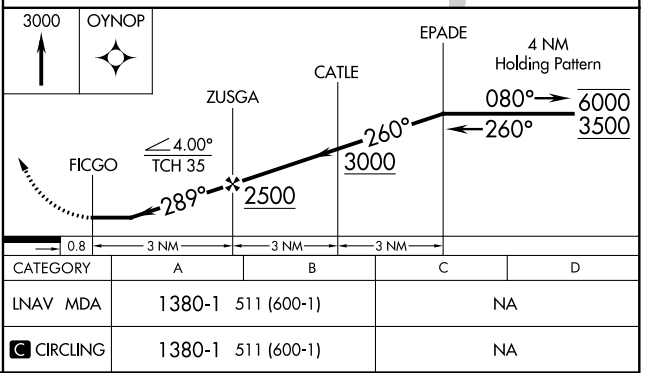
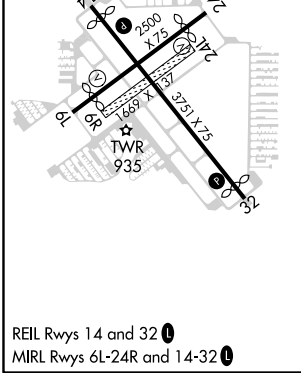
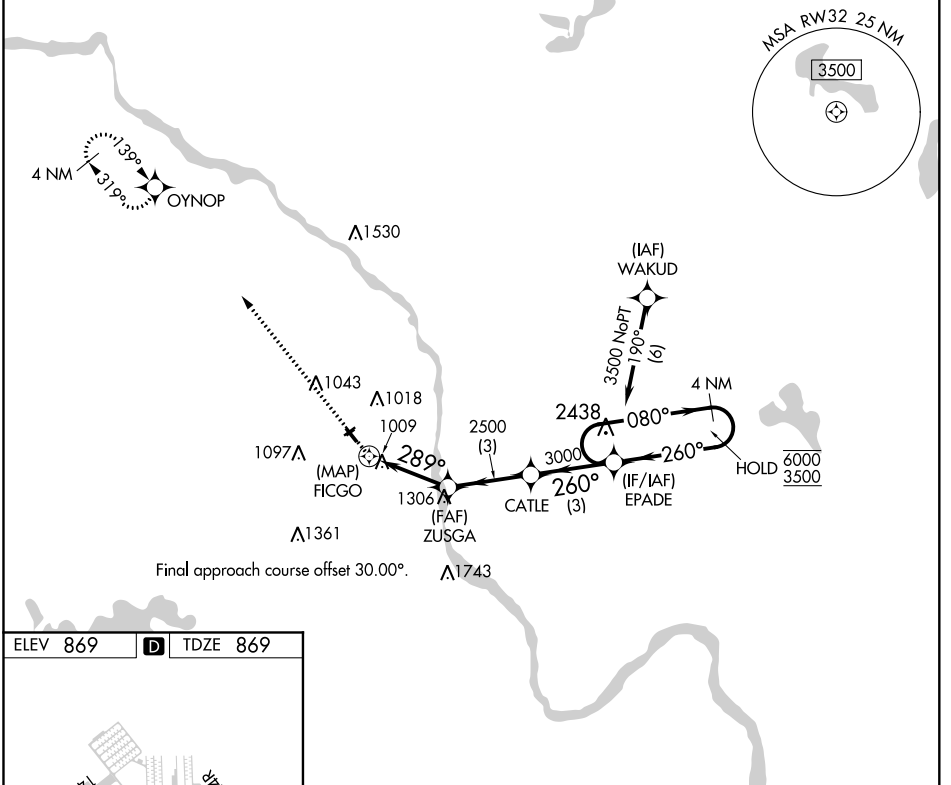


| | | |
|-------------|----------|-------------|
| APP CRS | Rwy Idg | 3509 |
| 289° | TDZE | 869 |
| | Apt Elev | 869 |

RNAV (GPS) RWY 32

CRYSTAL (MIC)

| | | | | | |
|---|---------------------|---|---------------|--------------|-----------------------------------|
| RNP APCH. | | MISSED APPROACH: Climb to 3000 direct OYNOP and hold. | | | |
| <p>▼ Circling NA to Rwys 6R and 24L.</p> <p>▲ Rwy 32 helicopter visibility reduction below ¾ SM NA.</p> | | | | | |
| ATIS | MINNEAPOLIS APP CON | CRYSTAL TOWER★ | GND CON | CLNC DEL | CLNC DEL |
| 124.475 | 126.5 335.65 | 120.7 (CTAF) ① | 121.6 | 121.6 | 121.6 (When twr closed) |
| | | UNICOM | 122.95 | | |



NC-1, 02 DEC 2021 to 30 DEC 2021

NC-1, 02 DEC 2021 to 30 DEC 2021