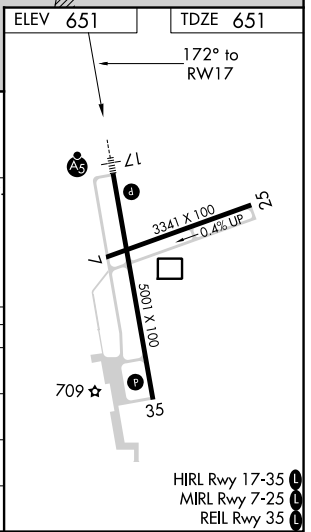
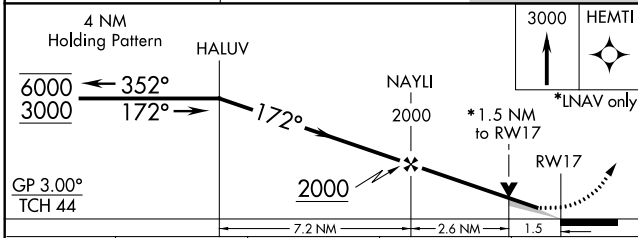
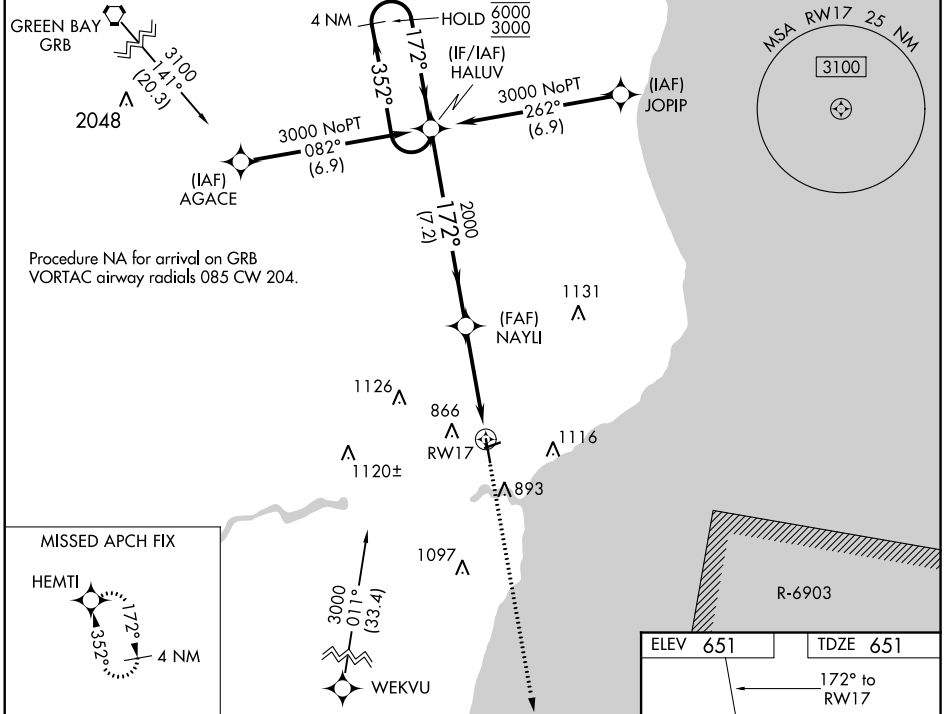


WAAS CH <b>63111</b> <b>W17A</b>	APP CRS <b>172°</b>	Rwy Idg TDZE Apt Elev	<b>5001</b> <b>651</b> <b>651</b>
--	------------------------	-----------------------------	---

# RNAV (GPS) RWY 17

MANITOWOC COUNTY (MTW)

RNP APCH.		MALSR	MISSED APPROACH: Climb to 3000 direct HEMTI and hold.
<p>▼ For uncompensated Baro-VNAV systems, LNAV/VNAV NA below -16°C or above 54°C. For inop ALS, increase LNAV/VNAV all Cats visibility to 7/8 SM.</p>			
AWOS-3PT <b>123.775</b>	GREEN BAY APP CON * <b>120.2 338.2</b>	UNICOM <b>122.8 (CTAF)</b>	



CATEGORY	A	B	C	D
LPV DA	851-1/2		200 (200-1/2)	
LNAV/VNAV DA	942-1/2		291 (300-1/2)	
LNAV MDA	1180-1/2	529 (600-1/2)	1180-1	529 (600-1)
<b>C</b> CIRCLING	1200-1	549 (600-1)	1420-2 1/4 769 (800-2 1/4)	1480-2 3/4 829 (900-2 3/4)

EC-3, 02 DEC 2021 to 30 DEC 2021

EC-3, 02 DEC 2021 to 30 DEC 2021