

WAAS CH 69532 W10A	APP CRS 103°	Rwy Idg 5006 TDZE 897 Apt Elev 906
--	------------------------	---

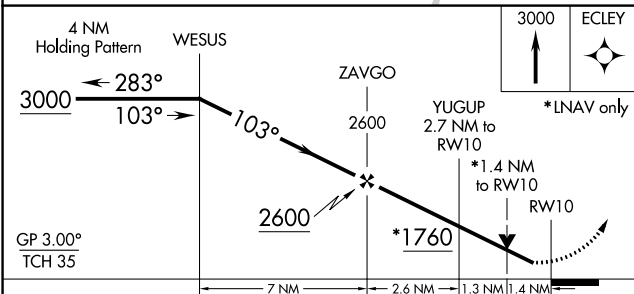
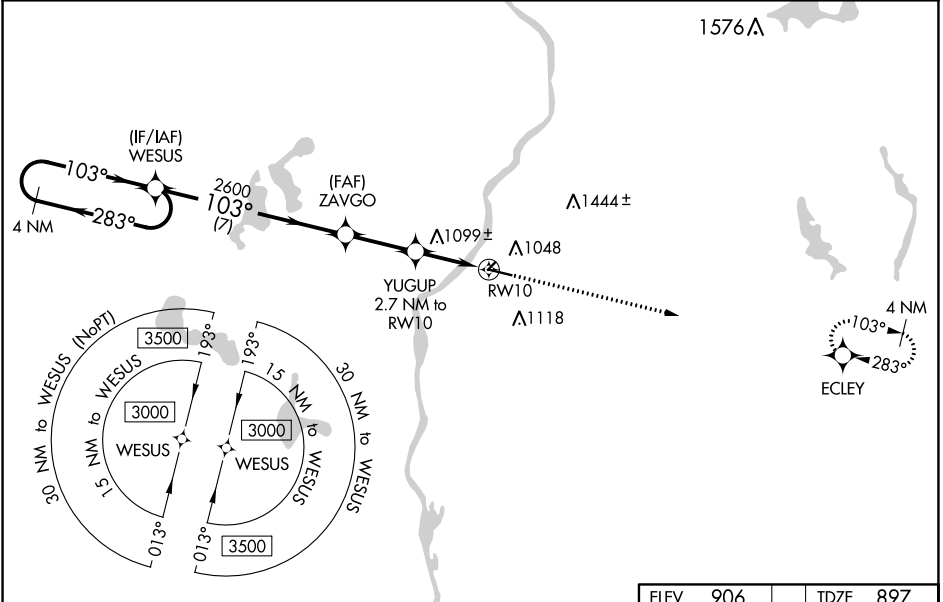
RNAV (GPS) RWY 10

L O SIMENSTAD MUNI (OEO)

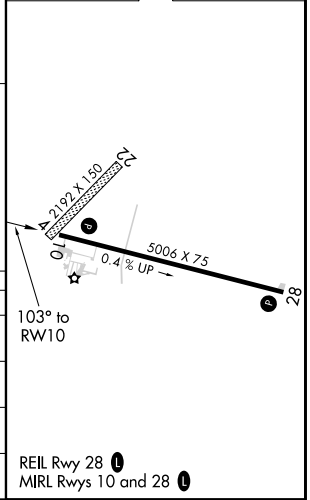
▼ For uncompensated Baro-VNAV systems, LNAV/VNAV NA below -16°C (4°F) or above 54°C (130°F).
▲ DME/DME RNP-0.3 NA. VDP and Baro-VNAV NA when using Anoka County-Blaine (Janes Fld) altimeter setting. When local altimeter setting not received, use Anoka County-Blaine (Janes Fld) altimeter setting and increase all DA 57 feet and all MDA 60 feet. Increase LPV all Cats and LNAV Cat C visibility 1/8 mile, LNAV/VNAV all Cats and Circling Cat C visibility 1/4 mile. Helicopter visibility reduction below 3/4 SM NA.

MISSED APPROACH:
Climb to 3000 direct ECLEY and hold.

AWOS-3 119.925	MINNEAPOLIS APP CON 121.2 335.65	GCO 121.725	CTAF 122.9
--------------------------	--	-----------------------	----------------------



ELEV 906	TDZE 897
----------	----------



CATEGORY	A	B	C	D
LPV DA	1147-7/8	250 (300-7/8)		NA
LNAV/VNAV DA	1190-1	293 (300-1)		NA
LNAV MDA	1360-1	463 (500-1)	1360-1 3/8 463 (500-1 3/8)	NA
C CIRCLING	1360-1 454 (500-1)	1500-1 594 (600-1)	1520-1 3/4 614 (700-1 3/4)	NA

EC-3, 02 DEC 2021 to 30 DEC 2021

EC-3, 02 DEC 2021 to 30 DEC 2021