

WAAS CH 97731 W28A	APP CRS 283°	Rwy Idg TDZE Apt Elev	5006 906 906
--	------------------------	-----------------------------	---

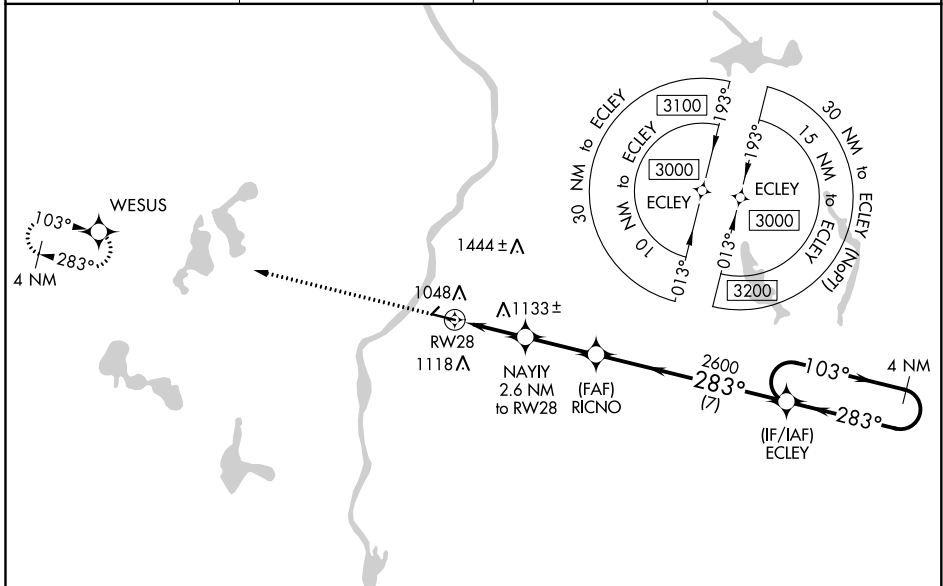
RNAV (GPS) RWY 28

L O SIMENSTAD MUNI (OEO)

⚠ For uncompensated Baro-VNAV systems, LNAV/VNAV NA below -1.6°C (4°F) or above 54°C (130°F). DME/DME RNP-0.3 NA. VDP and Baro-VNAV NA when using Anoka County-Blaine (Janes Fld) altimeter setting. Helicopter visibility reduction below 3/4 SM NA. When local altimeter setting not received, use Anoka County-Blaine (Janes Fld) altimeter setting and increase all DA 57 feet and all MDA 60 feet. Increase LPV all Cats visibility 1/8 mile, LNAV/VNAV all Cats, LNAV Cat C and Circling Cat C visibility 1/4 mile.

⚠ MISSED APPROACH: Climb to 3000 direct WESUS and hold.

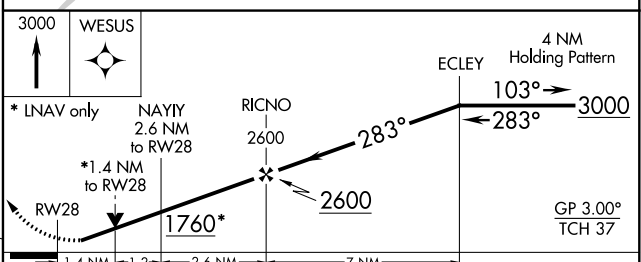
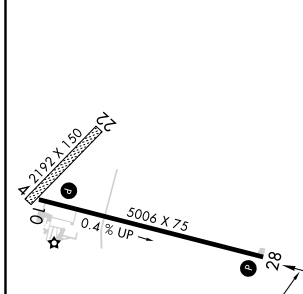
AWOS-3 119.925	MINNEAPOLIS APP CON 121.2 335.65	GCO 121.725	CTAF 122.90
--------------------------	--	-----------------------	-----------------------



EC-3, 02 DEC 2021 to 30 DEC 2021

EC-3, 02 DEC 2021 to 30 DEC 2021

ELEV 906	TDZE 906
----------	----------



CATEGORY	A	B	C	D
LPV DA	1106-3/4	200 (200-3/4)		NA
LNAV/VNAV DA	1179-7/8	273 (300-7/8)		NA
LNAV MDA	1400-1	494 (500-1)	1400-1 3/8 494 (500-1 3/8)	NA
<input checked="" type="checkbox"/> CIRCLING	1400-1 494 (500-1)	1500-1 594 (600-1)	1520-1 3/4 614 (700-1 3/4)	NA