

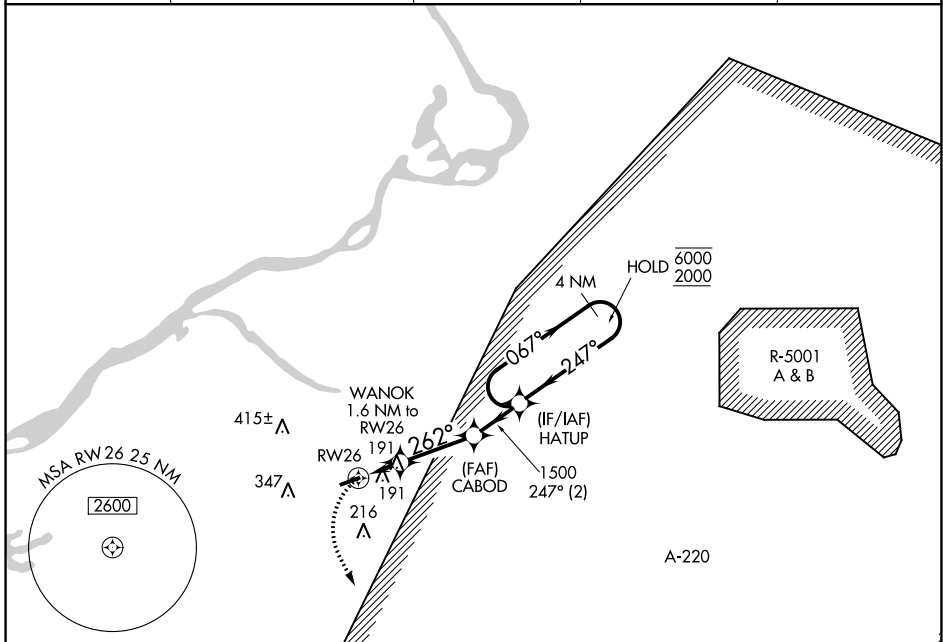
APP CRS	Rwy Idg	3881
262°	TDZE	53
	Apt Elev	53

RNAV (GPS) RWY 26

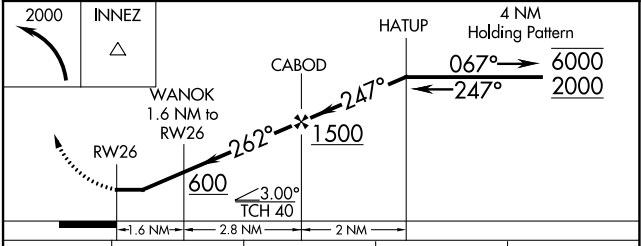
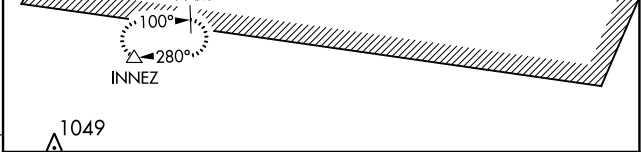
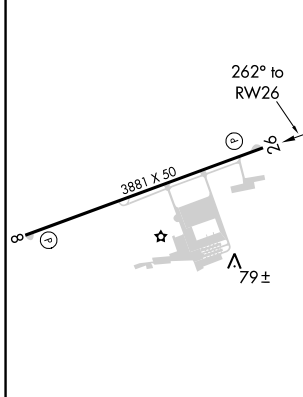
SOUTH JERSEY RGNL (VAY)

RNP APCH.		MISSED APPROACH: Climbing left turn to 2000 direct INNEZ and hold.		
Rwy 26 helicopter visibility reduction below 1 SM NA. Procedure NA at night.				

ASOS	MC GUIRE APP CON	GCO	UNICOM	
119.325	126.475 363.8	121.725	122.8 (CTAF)	123.3



ELEV 53	TDZE 53
---------	---------



CATEGORY	A	B	C	D
LNAV MDA	480-1	427 (500-1)	NA	
CIRCLING	520-1	540-1	NA	
	467 (500-1)	487 (500-1)		

MIRL Rwy 8-26
REIL Rwy 8 and 26

NE-2, 02 DEC 2021 to 30 DEC 2021

NE-2, 02 DEC 2021 to 30 DEC 2021