

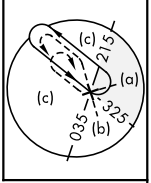
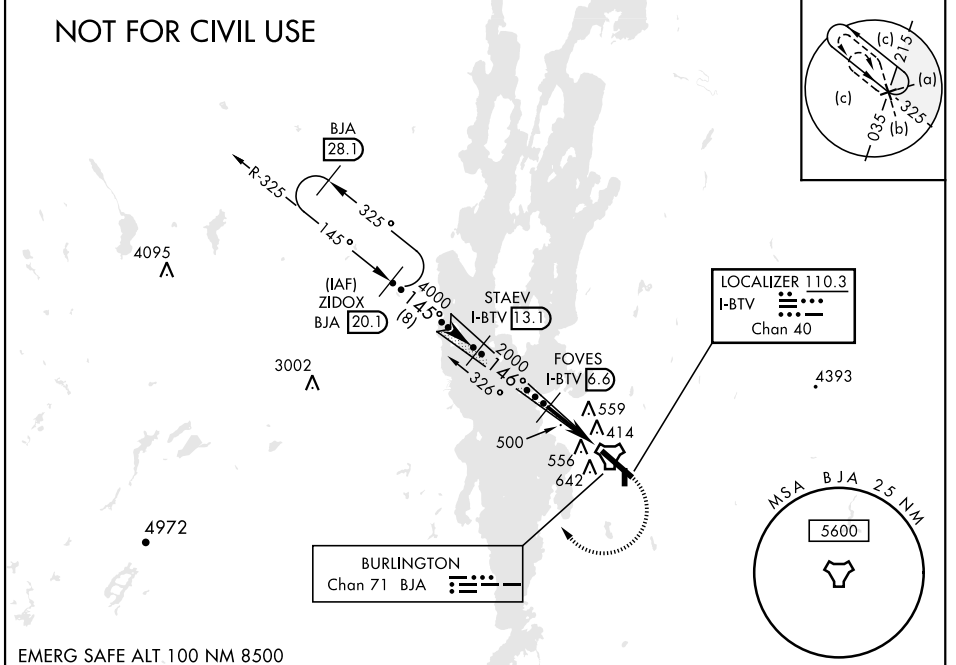
HI-ILS or LOC RWY 15

LOC/DME I-BTV 110.3 Chan 40	APCH CRS 146°	Rwy ldg TDZE 326 Arprt Elev 335	AL-70 [USAF]	BURLINGTON INTL (KBTV)
---	-------------------------	---	--------------	------------------------

TACAN required.	MALSR A5	MISSED APPROACH: Climb to 1000, then climbing right turn to 8000 on BJA TACAN R-325 to ZIDOX/BJA 20.1 DME and hold, continue Climb-In-Hold to 8000.
▽ ▲	* When ALS inop, increase CAT CDE RVR to 55, vis to 1 mile.	

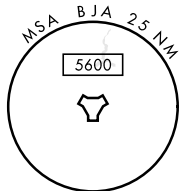
ATIS 123.8 269.9	APP CON 121.1 278.8	TOWER ★ 118.3 (CTAF) 0257.8	GND CON 126.3 348.6	CLNC DEL 119.15
----------------------------	-------------------------------	--	-------------------------------	---------------------------

NOT FOR CIVIL USE



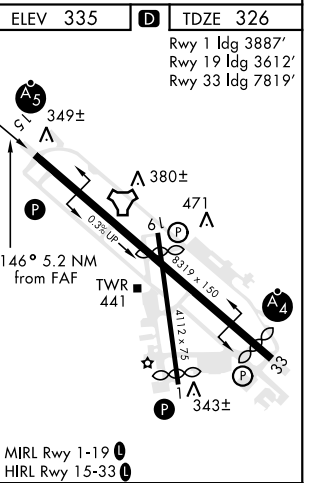
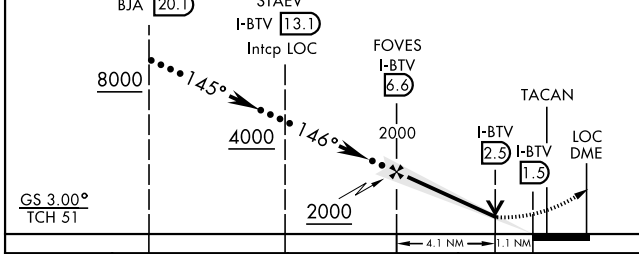
LOCALIZER 110.3
I-BTV
Chan 40

BURLINGTON
Chan 71 BJA



EMERG SAFE ALT 100 NM 8500

Use I-BTV DME when on localizer course.	1000	8000 BJA R-325	ZIDOX BJA 20.1	ELEV 335	D TDZE 326
				Rwy 1 ldg 3887'	Rwy 19 ldg 3612'
				Rwy 33 ldg 7819'	



CATEGORY	C	D	E
S-ILS 15	576/40	250	(300-¾)
S-LOC 15*	700/40	374	(400-¾)
C CIRCLING	1220-2¾ 885 (900-2¾)	1380-3 1045 (1100-3)	1500-3 1165 (1200-3)

HI-ILS or LOC RWY 15

NE-1, 30 DEC 2021 to 27 JAN 2022

NE-1, 30 DEC 2021 to 27 JAN 2022