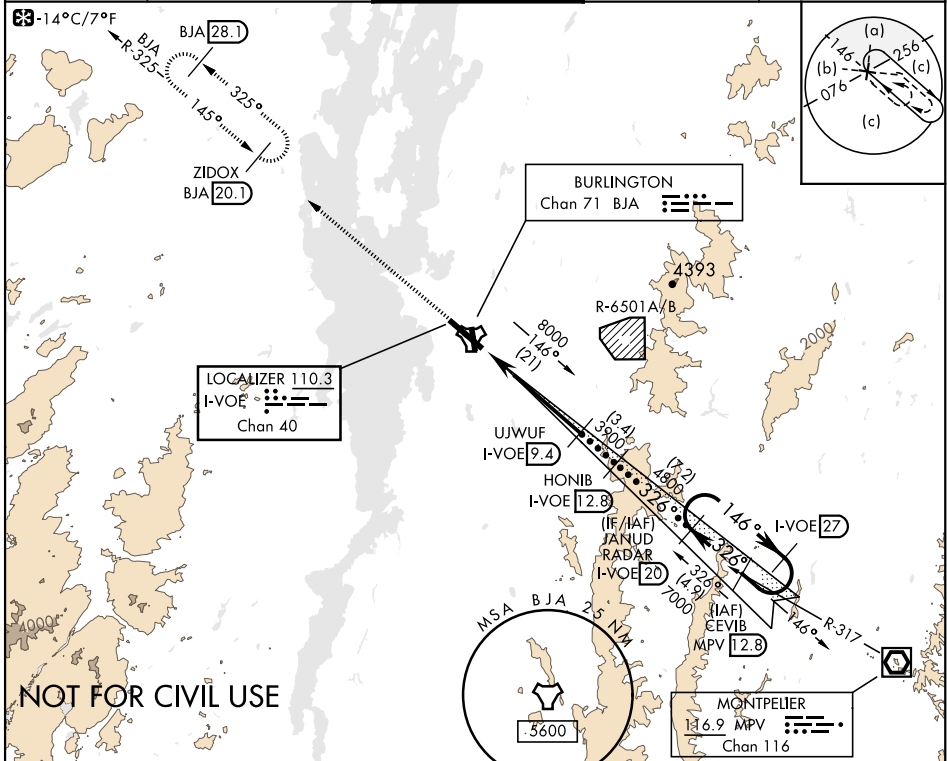


# HI-LOC RWY 33

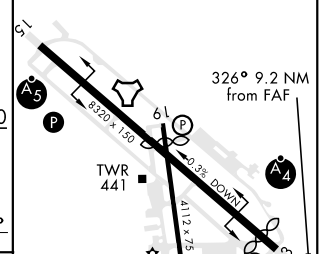
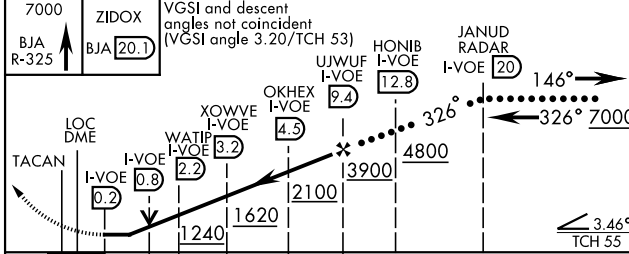
LOC/DME I-VOE <b>110.3</b> Chan <b>40</b>	APCH CRS <b>326°</b>	Rwy ldg TDZE Arprt Elev <b>7820</b> <b>334</b> <b>335</b>	AL-70 [USAF]	BURLINGTON INTL (KBTV)
---	-------------------------	--	--------------	------------------------

DME required.	MALSF 	MISSED APPROACH: Climb to 7000 on BJA TACAN R-325 to ZIDOX/BJA 20.1 DME and hold, continue climb-in-hold to 7000.
---------------	-----------	---

ATIS <b>123.8 269.9</b>	APP CON <b>121.1 278.8</b>	TOWER ★ <b>118.3 (CTAF) 0257.8</b>	GND CON <b>126.3 348.6</b>	CLNC DEL <b>119.15</b>
----------------------------	-------------------------------	---------------------------------------	-------------------------------	---------------------------



ELEV 335	TDZE 334
----------	----------



CATEGORY	C	D	E
S-LOC 33 *	760/50	426	(500-1)
CIRCLING	1200-2½ 865 (900-2½)	1380-3 1045 (1100-3)	1420-3 1085 (1100-3)

MIRL Rwy 1-19	Rwy 1 ldg 3886'
HIRL Rwy 15-33	Rwy 19 ldg 3611'
	Rwy 33 ldg 7820'

# HI-LOC RWY 33

NE-1, 30 DEC 2021 to 27 JAN 2022

NE-1, 30 DEC 2021 to 27 JAN 2022