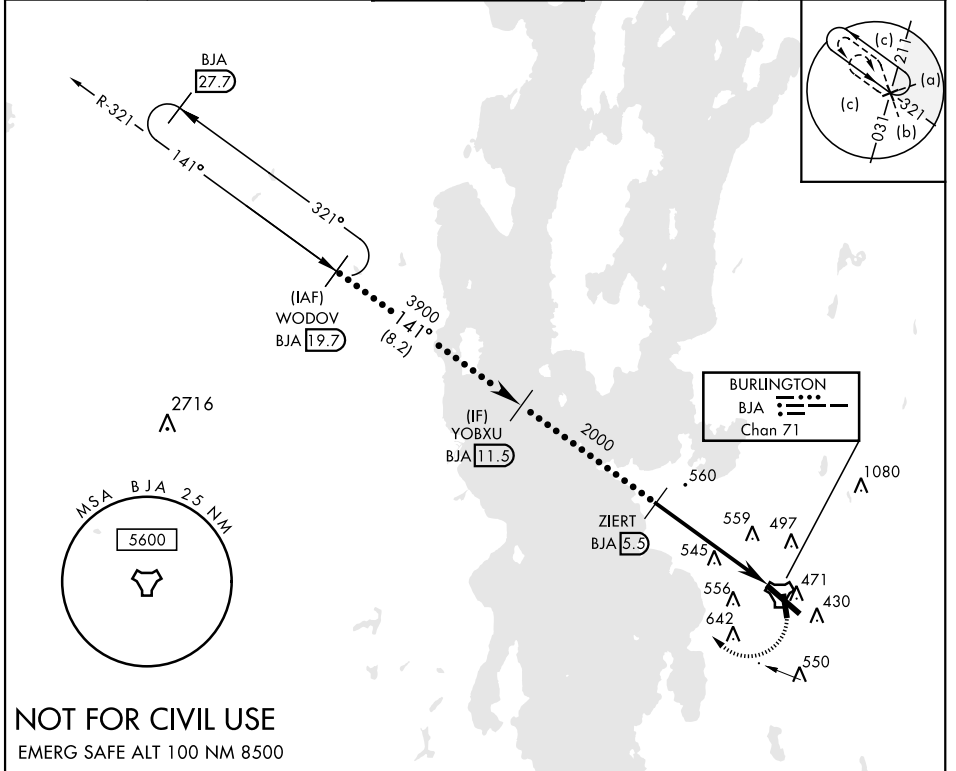


HI-TACAN RWY 15

TACAN BJA Chan 71	APCH CRS 141°	Rwy ldg TDZE 326 Arpt Elev 335	AL-70 [USAF]	BURLINGTON INTL (KBTV)
▼ * When ALS inop, increase CAT CDE vis to 1 $\frac{3}{8}$ mile. ▲		MALSR A5	MISSED APPROACH: Climbing right turn to 8000 on BJA R-321 to WODOV / BJA 19.7 DME and hold, continue climb-in-hold to 8000.	

ATIS 123.8 269.9	APP CON 121.1 278.8	TOWER ★ 118.3 (CTAF) 0257.8	GND CON 126.3 348.6	CLNC DEL 119.15
----------------------------	-------------------------------	---------------------------------------	-------------------------------	---------------------------



NOT FOR CIVIL USE
EMERG SAFE ALT 100 NM 8500

WODOV 19.7	YOBXU 11.5	ZIERT 5.5	TACAN ZIBVO 1.9 0.5	ELEV 335	TDZE 326
8000 141° 3900 2000 3.05° TCH 51				BJA R-321 WODOV BJA 19.7 Rwy 1 ldg 3887' Rwy 19 ldg 3612' Rwy 33 ldg 7819'	
3.6 NM 1.5 NM				141° 5.1 NM from FAF TWR 441 MRL Rwy 1-19 HIRL Rwy 15-33	
CATEGORY	C	D	E		
S-15*	820/50			494	(500-1)
CIRCLING	1220-2 $\frac{3}{4}$ 885 (900-2 $\frac{3}{4}$)	1380-3 1045 (1100-3)	1500-3 1165 (1200-3)		

HI-TACAN RWY 15

NE-1, 30 DEC 2021 to 27 JAN 2022

NE-1, 30 DEC 2021 to 27 JAN 2022