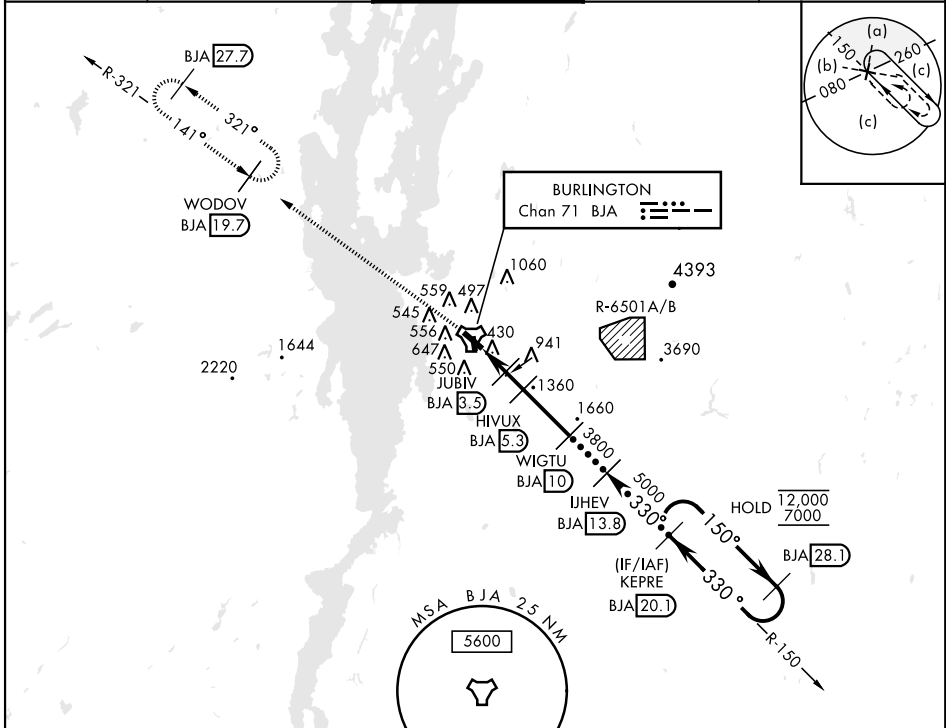


HI-TACAN RWY 33

TACAN BJA Chan 71	APCH CRS 330°	Rwy ldg TDZE Arprt Elev	7819 334 335	AL-70 [USAF]	BURLINGTON INTL (KBTV)
		MALSF MISSED APPROACH: Climb to 8000 on BJA TACAN R-321 to WODOV/BJA 19.7 DME and hold, continue climb-in-hold to 8000.			

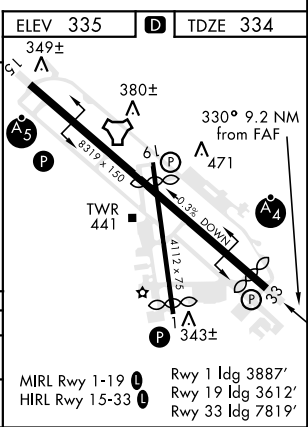
ATIS 123.8 269.9	APP CON 121.1 278.8	TOWER ★ 118.3 (CTAF) 0257.8	GND CON 126.3 348.6	CLNC DEL 119.15
---------------------	------------------------	--------------------------------	------------------------	--------------------



NOT FOR CIVIL USE

EMERG SAFE ALT 100 NM 8500

8000 BJA R-321	WODOV BJA 19.7	VGSIs and descent angles not coincident (VGSIs Angle 3.20/TCH 53).		KEPRE 20.1
TACAN: ZOKOD 0.9, JUBIV 3.3, HUVUX 5.3, WIGTU 10, IJHEV 13.8, KEPRE 20.1 Altitudes: 2040, 1360, 3800, 5000, 12,000/7000 TCH 53, 3.50°				
CATEGORY	C	D	E	
S-33	1200-2½	866	(900-2½)	
CIRCLING	1220-2¾ 885 (900-2¾)	1380-3 1045 (1100-3)	1500-3 1165 (1200-3)	



HI-TACAN RWY 33



NE-1, 30 DEC 2021 to 27 JAN 2022

NE-1, 30 DEC 2021 to 27 JAN 2022

Orig-A 04NOV21

MIRL Rwy 1-19 1 Rwy 1 ldg 3887'
HIRL Rwy 15-33 1 Rwy 19 ldg 3612'
Rwy 33 ldg 7819'