


LOC/DME I-BTV <b>110.3</b> Chan <b>40</b>	APP CRS <b>146°</b>	Rwy Idg TDZE Apt Elev	<b>7820</b> <b>326</b> <b>335</b>
---	------------------------	-----------------------------	---

# ILS or LOC RWY 15

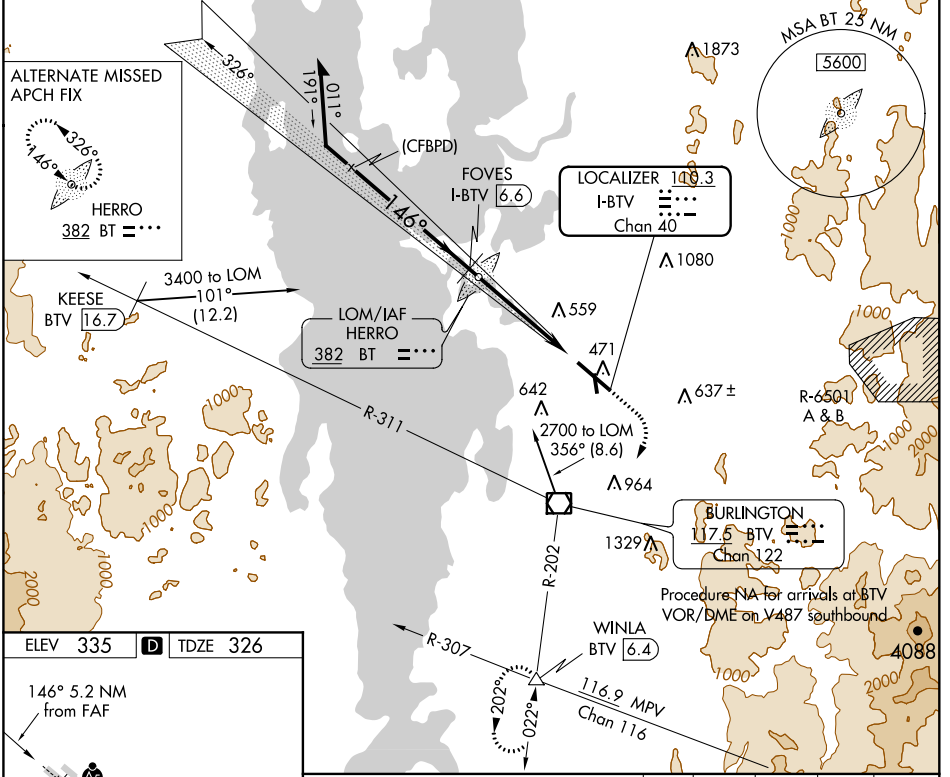
BURLINGTON INTL (BTV)

DME required for LOC only. ADF or RADAR required for procedure entry.


**⚠** Circling Rwy 1 NA at night. Rwy 15 helicopter visibility reduction below 3/4 SM NA. For inop ALS, increase S-LOC 1.5 all Cats visibility to RVR 5500. Inop table does not apply to S-ILS 15.

**MALSR**  MISSED APPROACH: Climb to 800 then climbing right turn to 3000 direct BTV VOR/DME and BTV VOR/DME R-202 to WINLA INT/BTV 6.4 DME and hold.

ATIS <b>123.8 269.9</b>	BURLINGTON APP CON * <b>121.1 278.8</b>	BURLINGTON TOWER * <b>118.3 (CTAF) 257.8</b>	GND CON <b>126.3 348.6</b>	CLNC DEL <b>119.15</b>	UNICOM <b>122.95</b>
----------------------------	--	---	-------------------------------	---------------------------	-------------------------



**ALTERNATE MISSED APCH FIX**

 HERRO  
382 BT = ...

3400 to LOM  
101° (12.2)

KEESE BTV [6.7]

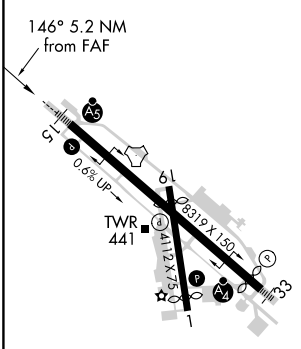
LOM/IAF  
HERRO  
382 BT = ...

LOCALIZER 110.3  
I-BTV  
Chan 40

BURLINGTON  
117.6 BTV  
Chan 122

Procedure NA for arrivals at BTV VOR/DME on V487 Southbound

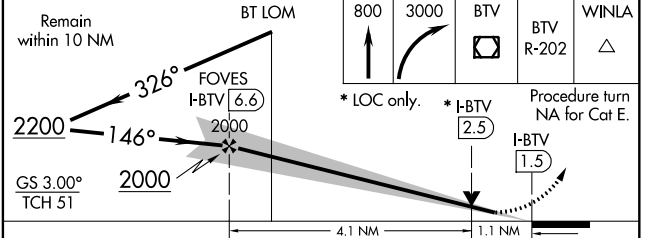
ELEV 335	<b>D</b>	TDZE 326
----------	----------	----------



MIRL Rwy 1-19 **Ⓛ**  
HIRL Rwy 15-33 **Ⓛ**

FAF to MAP 5.2 NM

Knots	60	90	120	150	180
Min:Sec	5:12	3:28	2:36	2:05	1:44



CATEGORY	A	B	C	D	E
S-ILS 15		576/40	250 (300-3/4)		
S-LOC 15		700/40	374 (400-3/4)		
CIRCLING	840-1 505 (600-1)	860-1 525 (600-1)	1220-2 3/4 885 (900-2 3/4)	1380-3 1045 (1100-3)	1480-3 1145 (1200-3)

NE-1, 30 DEC 2021 to 27 JAN 2022

NE-1, 30 DEC 2021 to 27 JAN 2022