

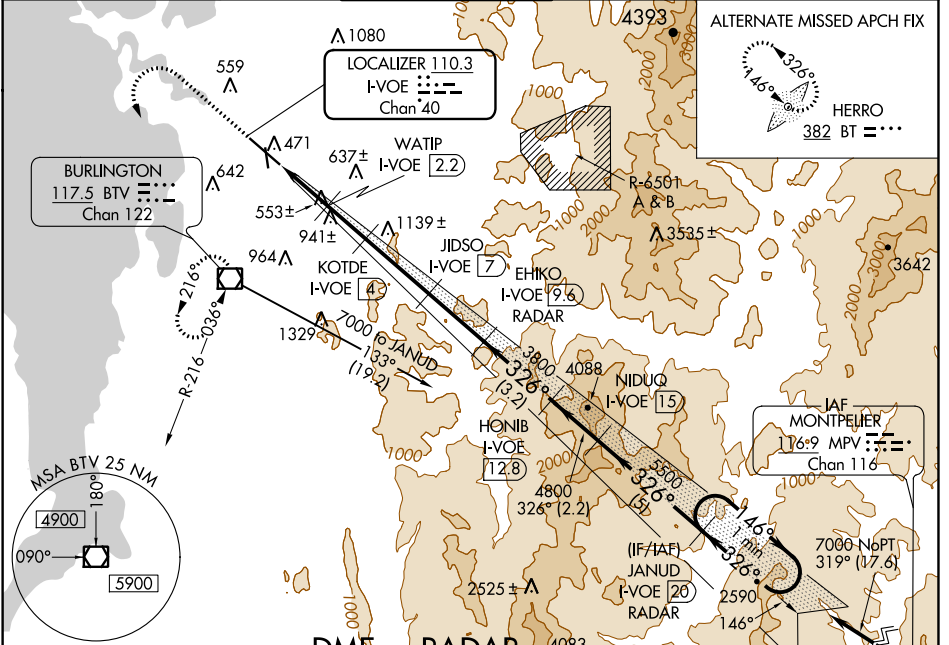
LOC/DME I-VOE 110.3 Chan 40	APP CRS 326°	Rwy Idg TDZE Apt Elev 7819 335 335
--	------------------------	--

ILS or LOC/DME RWY 33

BURLINGTON INTL (BTV)

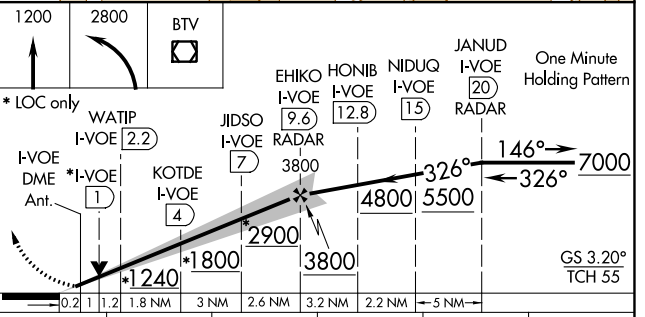
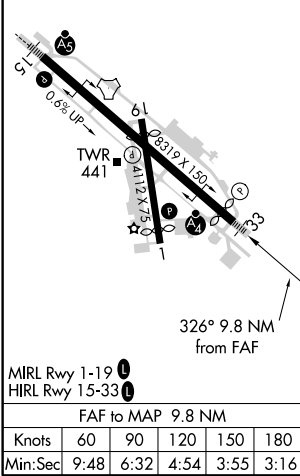
⚠ Circling to Rwy 1 NA at night. Inoperative table does not apply to S-LOC 33 Cats C, D, and E. Inoperative table does not apply to S-ILS all Cats. Autopilot coupled approaches NA.	MALSF	MISSED APPROACH: Climb to 1200 then climbing left turn to 2800 direct BTV VOR/DME and hold, continue climb-in-hold to 2800.
-10°C		

ATIS 123.8 269.9	BURLINGTON APP CON * 121.1 278.8	BURLINGTON TOWER * 118.3 (CTAF) 257.8	GND CON 126.3 348.6	CLNC DEL 119.15	UNICOM 122.95
-----------------------------------	---	--	--------------------------------------	----------------------------------	--------------------------------



ELEV 335	D	TDZE 335
----------	----------	----------

DME or RADAR REQUIRED



CATEGORY	A	B	C	D	E
S-ILS 33	535/40 200 (200-¾)		585/50 250 (300-1)		NA
S-LOC 33	820/40 485 (500-¾)		820/60 485 (500-1¼)	820-1½ 485 (500-1½)	820-1¾ 485 (500-1¾)
C CIRCLING	840-1 505 (600-1)	860-1 525 (600-1)	1200-2½ 865 (900-2½)	1380-3 1045 (1100-3)	

NE-1, 30 DEC 2021 to 27 JAN 2022

NE-1, 30 DEC 2021 to 27 JAN 2022