

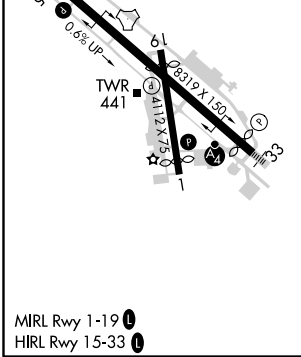
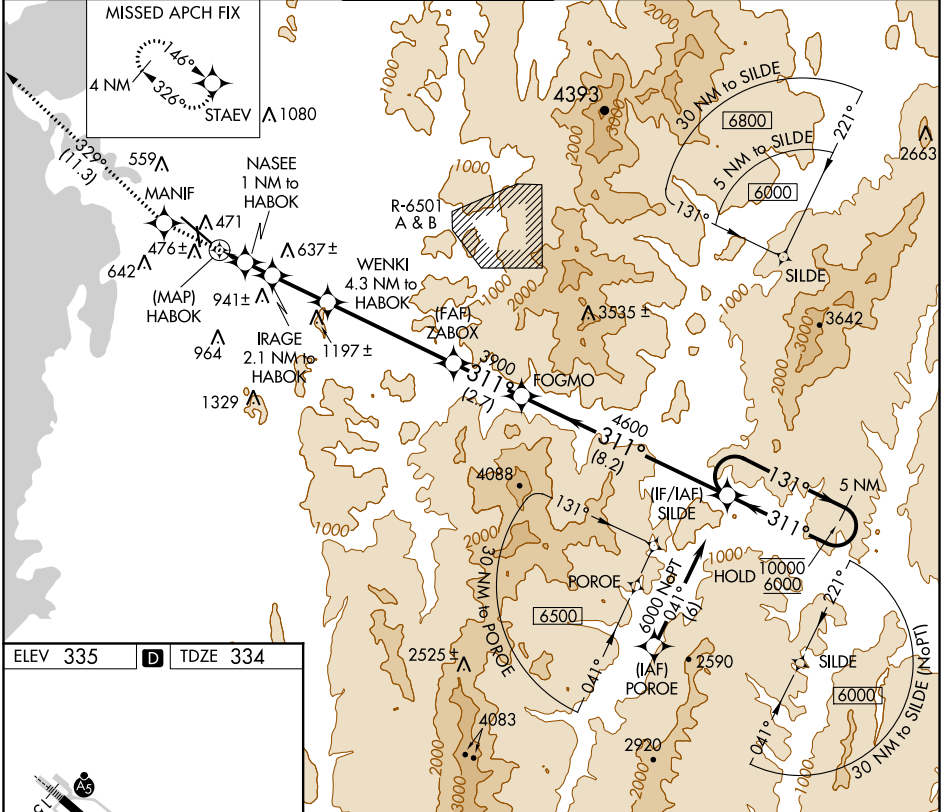
APP CRS	Rwy Idg	7819
311°	TDZE	334
	Apt Elev	335

RNAV (GPS) Y RWY 33

BURLINGTON INTL (BTV)

RNP APCH.	<p>⚠ Circling Rwy 1 NA at night. Rwy 33 helicopter visibility reduction below 3/4 SM NA. For inop ALS, increase LNAV Cat C visibility to RVR 6000.</p>	MALSF	<p>MISSED APPROACH: Climb to 3000 direct MANIF and on track 329° to STAEV and hold.</p>
-----------	--	-------	---

ATIS	BURLINGTON APP CON *	BURLINGTON TOWER *	GND CON	CLNC DEL	UNICOM
123.8 269.9	121.1 278.8	118.3 (CTAF) 0 257.8	126.3 348.6	119.15	122.95



3000	MANIF	tr 329°	STAEV	WENKI 4.3 NM to HABOK	ZABOX	FOGMO	SILDE	5 NM Holding Pattern
				IRAGE 2.1 NM to 1 NM to HABOK				
	HABOK			HABOK				
	940		1320	2120	3900	4600	311°	10000 6000
								VGSI and descent angles not coincident (VGSI Angle 3.20/TCH 53).
	0.5	1.1 NM	2.2 NM	5 NM	2.7 NM	8.2 NM		

CATEGORY	A	B	C	D	E
LNAV MDA	740/40	406 (500-3/4)	740/50 406 (500-1)	740/60	406 (500-1 1/4)
C CIRCLING	840-1 505 (600-1)	860-1 525 (600-1)	1200-2 1/2 865 (900-1 1/2)	1380-3 1045 (1100-3)	1500-3 1165 (1200-3)

NE-1, 30 DEC 2021 to 27 JAN 2022

NE-1, 30 DEC 2021 to 27 JAN 2022