

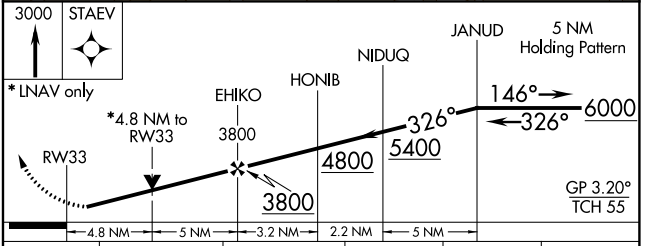
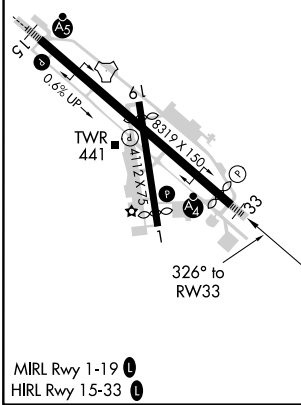
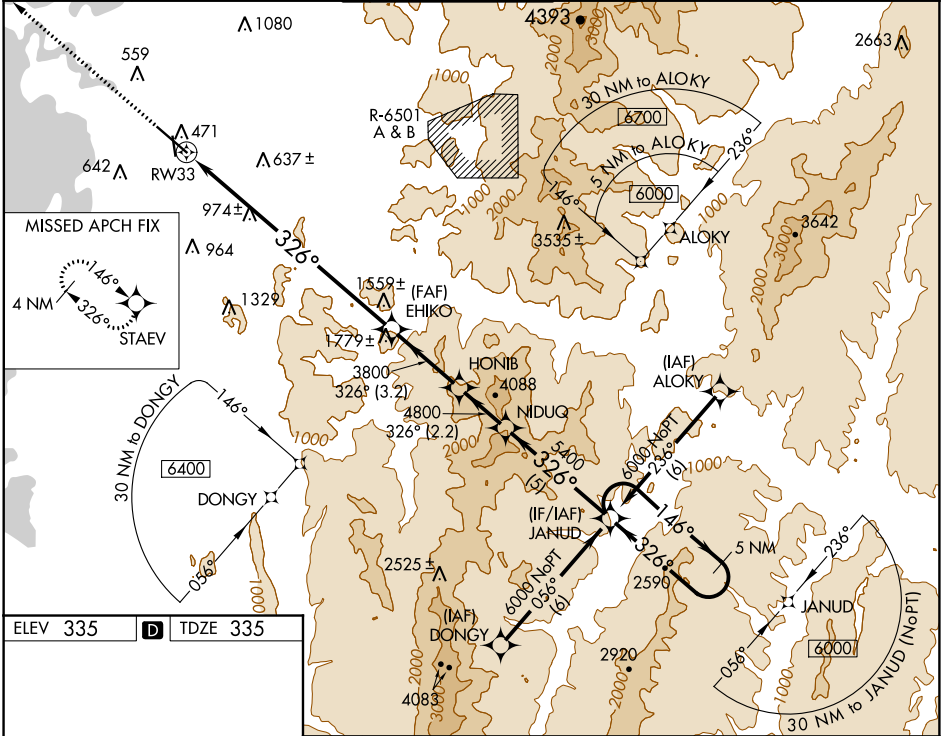
WAAS CH 65812 W33A	APP CRS 326°	Rwy ldg TDZE 335 Apt Elev 335	7819
----------------------------------------	------------------------	---------------------------------------------------	-------------

RNAV (GPS) Z RWY 33

BURLINGTON INTL (BTV)

RNP APCH.	MALSF	MISSED APPROACH: Climb to 3000 direct STAEV and hold.
<p>Inoperative table does not apply. For uncompensated Baro-VNAV systems, LNAV/VNAV NA below -1.5°C (5°F) or above 54°C (130°F). Rwy 33 helicopter visibility reduction below ¾ SM NA.</p>		

ATIS 123.8 269.9	BURLINGTON APP CON * 121.1 278.8	BURLINGTON TOWER * 118.3 (CTAF) 0 257.8	GND CON 126.3 348.6	CLNC DEL 119.15	UNICOM 122.95
----------------------------	--------------------------------------------	---------------------------------------------------	-------------------------------	---------------------------	-------------------------



CATEGORY	A	B	C	D	E
LPV DA	535/40	200 (200-¾)	585/50	250 (300-1)	
LNAV/VNAV DA	1782-5 1447 (1500-5)				
LNAV MDA	2000/60 1665 (1700-1¼)	2000-1½ 1665 (1700-1½)	2000-3	1665 (1700-3)	

NE-1, 30 DEC 2021 to 27 JAN 2022

NE-1, 30 DEC 2021 to 27 JAN 2022