

WAAS CH <b>70307</b> <b>W27A</b>	APP CRS <b>265°</b>	Rwy Idg TDZE Apt Elev	<b>7985</b> <b>6121</b> <b>6160</b>
--	------------------------	-----------------------------	---

# RNAV (GPS) RWY 27

CHEYENNE RGNL/JERRY OLSON FLD (CYS)

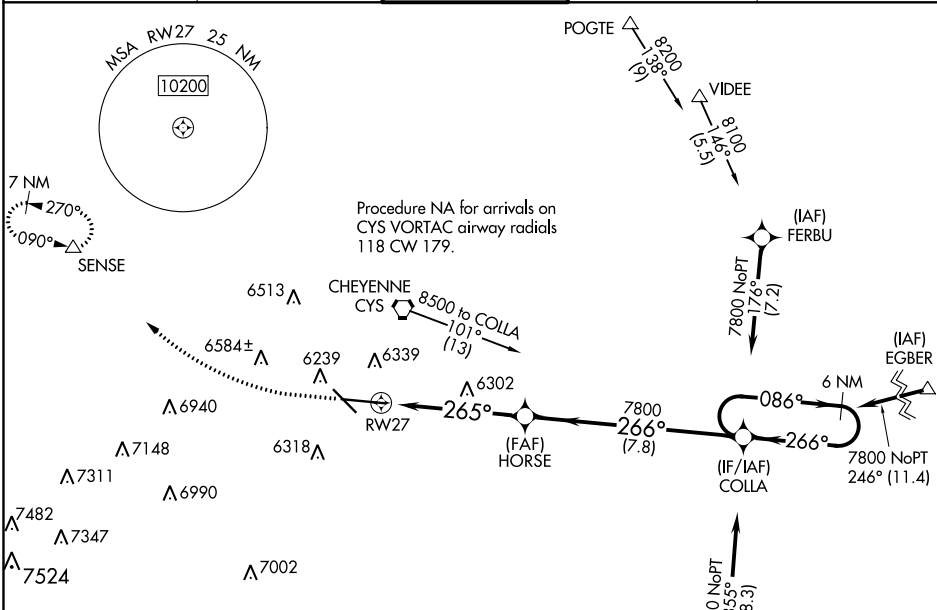
RNP APCH.

**⚠** For uncompensated Baro-VNAV systems, LNAV/VNAV NA below -24°C or above 45°C. For inop ALS, increase LNAV/VNAV all Cnts visibility to RVR 4000.  
**⚠** ASR/PAR # RVR 1800 authorized with use of FD or AP or HUD to DA.

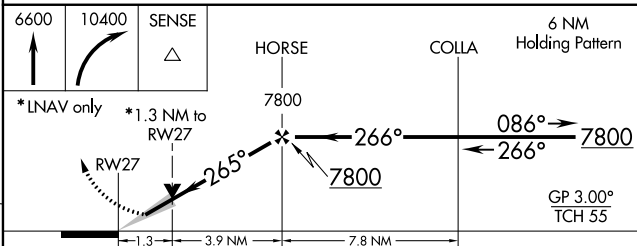
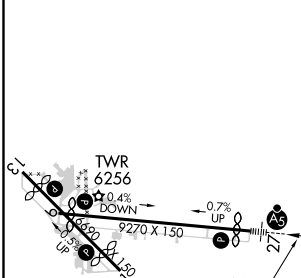


**MISSED APPROACH:** Climb to 6600, then climbing right turn to 10400 direct SENSE and hold, continue climb-in-hold to 10400.

ATIS <b>134.425 278.3</b>	CHEYENNE APP CON* <b>124.55 263.075</b>	CHEYENNE TOWER* <b>118.7 (CTAF) 0 257.8</b>	GND CON <b>121.9 254.275</b>	UNICOM <b>122.95</b>
------------------------------	--	--	---------------------------------	-------------------------



ELEV 6160	<b>D</b>	TDZE 6121
-----------	----------	-----------



CATEGORY	A	B	C	D
LPV DA#		6321/24	200 (200-1/2)	
LNAV/VNAV DA		6376/24	255 (300-1/2)	
LNAV MDA	6560/24	439 (400-1/2)	6560/40	439 (400-3/4)
<b>C</b> CIRCLING	6640-1	480 (500-1)	6900-2 740 (800-2)	6920-2 1/2 760 (800-2 1/2)

REIL Rwy 9, 13 and 31  
 HIRL Rwy 9-27  
 MIRL Rwy 13-31

NW-1, 30 DEC 2021 to 27 JAN 2022

NW-1, 30 DEC 2021 to 27 JAN 2022