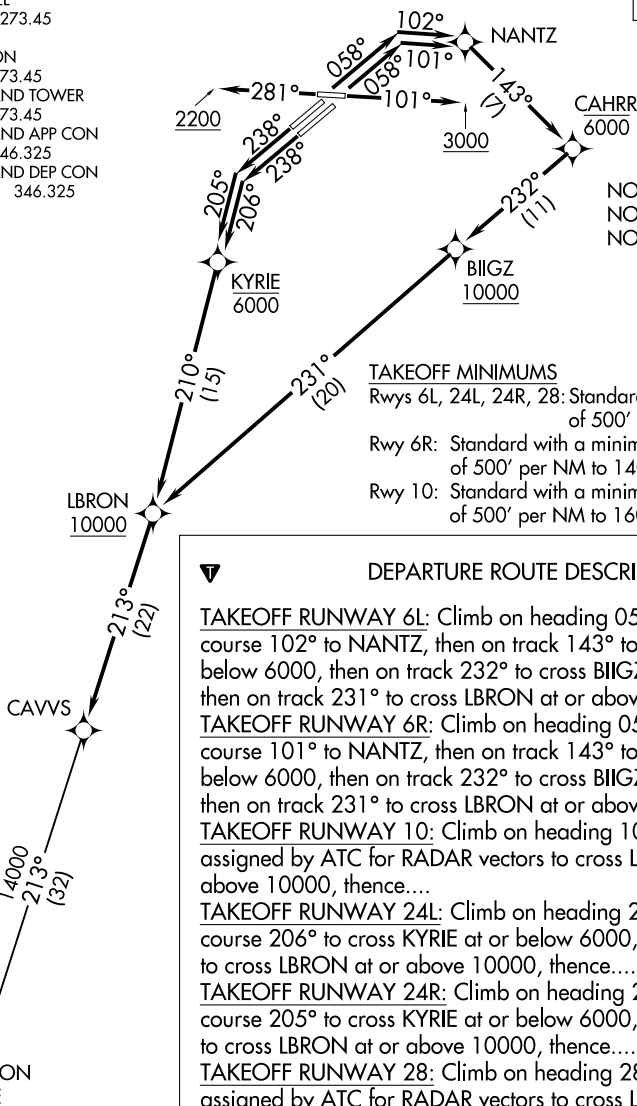


CAVVS FOUR DEPARTURE (RNAV)

D-ATIS
132.375
CLNC DEL
125.05 273.45
CPDLC
GND CON
121.7 273.45
CLEVELAND TOWER
124.5 273.45
CLEVELAND APP CON
124.0 346.325
CLEVELAND DEP CON
135.875 346.325

**TOP ALTITUDE:
14000**



NOTE: RADAR required.
NOTE: RNAV 1.
NOTE: DME/DME/IRU or GPS required.

TAKEOFF MINIMUMS

Rwys 6L, 24L, 24R, 28: Standard with a minimum climb of 500' per NM to 1300.
Rwy 6R: Standard with a minimum climb of 500' per NM to 1400.
Rwy 10: Standard with a minimum climb of 500' per NM to 1600.

DEPARTURE ROUTE DESCRIPTION

TAKEOFF RUNWAY 6L: Climb on heading 058° to intercept course 102° to NANTZ, then on track 143° to cross CAHRR at or below 6000, then on track 232° to cross BIIGZ at or above 10000, then on track 231° to cross LBRON at or above 10000, then....
TAKEOFF RUNWAY 6R: Climb on heading 058° to intercept course 101° to NANTZ, then on track 143° to cross CAHRR at or below 6000, then on track 232° to cross BIIGZ at or above 10000, then on track 231° to cross LBRON at or above 10000, then....
TAKEOFF RUNWAY 10: Climb on heading 101° to 3000, then as assigned by ATC for RADAR vectors to cross LBRON at or above 10000, then....
TAKEOFF RUNWAY 24L: Climb on heading 238° to intercept course 206° to cross KYRIE at or below 6000, then on track 210° to cross LBRON at or above 10000, then....
TAKEOFF RUNWAY 24R: Climb on heading 238° to intercept course 205° to cross KYRIE at or below 6000, then on track 210° to cross LBRON at or above 10000, then....
TAKEOFF RUNWAY 28: Climb on heading 281° to 2200, then as assigned by ATC for RADAR vectors to cross LBRON at or above 10000, then....

....on track 213° to CAVVS, then on (transition). Maintain 14000, expect filed altitude ten minutes after departure.

APPLETON TRANSITION (CAVVS4.APE)

NOTE: Chart not to scale.

CAVVS FOUR DEPARTURE (RNAV)

EC-2, 30 DEC 2021 to 27 JAN 2022

EC-2, 30 DEC 2021 to 27 JAN 2022