

GTIKE FOUR DEPARTURE (RNAV)  
(GTIKE4,GTIKE) 26MAR20

CLEVELAND-HOPKINS INTL (CLE)  
CLEVELAND, OHIO

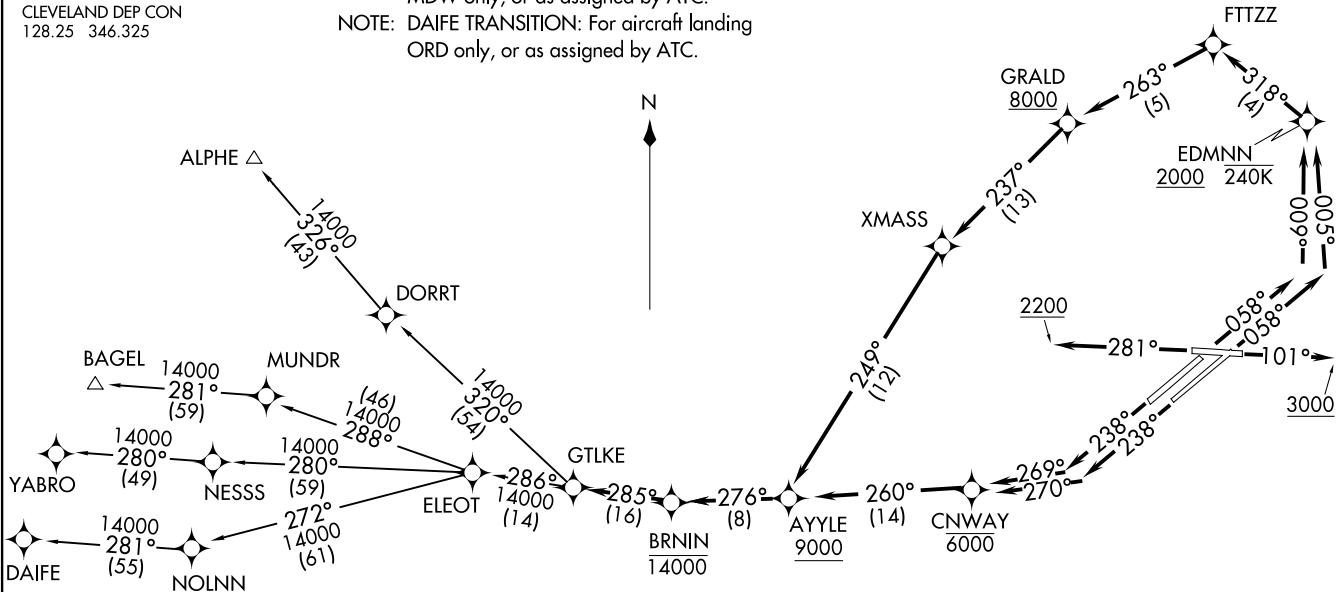
D-ATIS  
132.375  
CLNC DEL  
125.05 273.45  
CPDLC  
GND CON  
121.7 273.45  
CLEVELAND TOWER  
124.5 273.45  
CLEVELAND APP CON  
124.0 346.325  
CLEVELAND DEP CON  
128.25 346.325

**TOP ALTITUDE:  
14000**

- NOTE: RADAR required.
- NOTE: RNAV 1.
- NOTE: DME/DME/IRU or GPS required.
- NOTE: BAGEL TRANSITION: For aircraft landing MDW only, or as assigned by ATC.
- NOTE: DAIFE TRANSITION: For aircraft landing ORD only, or as assigned by ATC.

**TAKEOFF MINIMUMS**

- Rwys 6L/R, 24L/R, 28: Standard with a minimum climb of 500' per NM to 1300.
- Rwy 10: Standard with a minimum climb of 500' per NM to 1600.



NOTE: Chart not to scale.

(NARRATIVE ON FOLLOWING PAGE)

(GTIKE4,GTIKE) 20142  
GTIKE FOUR DEPARTURE (RNAV)

A-84 (FAA)  
CLEVELAND-HOPKINS INTL (CLE)  
CLEVELAND, OHIO

# GTLKE FOUR DEPARTURE (RNAV)



## DEPARTURE ROUTE DESCRIPTION

TAKEOFF RUNWAY 6L: Climb on heading 058° to intercept course 009° to cross EDMNN at or above 2000 and at or below 240K, then on track 318° to FTTZZ, then on track 263° to cross GRALD at or above 8000, then on track 237° to XMASS, then on track 249° to cross AYYLE at or above 9000, thence....

TAKEOFF RUNWAY 6R: Climb on heading 058° to intercept course 005° to cross EDMNN at or above 2000 and at or below 240K, then on track 318° to FTTZZ, then on track 263° to cross GRALD at or above 8000, then on track 237° to XMASS, then on track 249° to cross AYYLE at or above 9000, thence....

TAKEOFF RUNWAY 10: Climb on heading 101° to 3000, then as assigned by ATC for RADAR vectors to cross AYYLE at or above 9000, thence....

TAKEOFF RUNWAY 24L: Climb on heading 238° to intercept course 270° to cross CNWAY at or below 6000, then on track 260° to cross AYYLE at or above 9000, thence....

TAKEOFF RUNWAY 24R: Climb on heading 238° to intercept course 269° to cross CNWAY at or below 6000, then on track 260° to cross AYYLE at or above 9000, thence....

TAKEOFF RUNWAY 28: Climb on heading 281° to 2200, then as assigned by ATC for RADAR vectors to cross AYYLE at or above 9000, thence....

...on track 276° to cross BRNIN at or below 14000, then on track 285° to GTLKE then on (transition). Maintain 14000, expect filed altitude ten minutes after departure.

- ALPHE TRANSITION (GTLKE4.ALPHE)
- BAGEL TRANSITION (GTLKE4.BAGEL)
- DAIFE TRANSITION (GTLKE4.DAIFE)
- YABRO TRANSITION (GTLKE4.YABRO)

EC-2, 30 DEC 2021 to 27 JAN 2022

EC-2, 30 DEC 2021 to 27 JAN 2022