

LOC/DME I-PVY 111.55 Chan 52 (Y)	APP CRS 238°	Rwy Idg TDZE 780 Apt Elev 799
--	------------------------	---


ILS RWY 24R (CAT II & III)

CLEVELAND-HOPKINS INTL (CLE)

DME required. Aircraft not DME/DME/IRU or GPS equipped - RADAR required for procedure entry. RNAV 1. From LLROY and BUDRW: RNAV 1-DME/DME/IRU or GPS required for procedure entry.

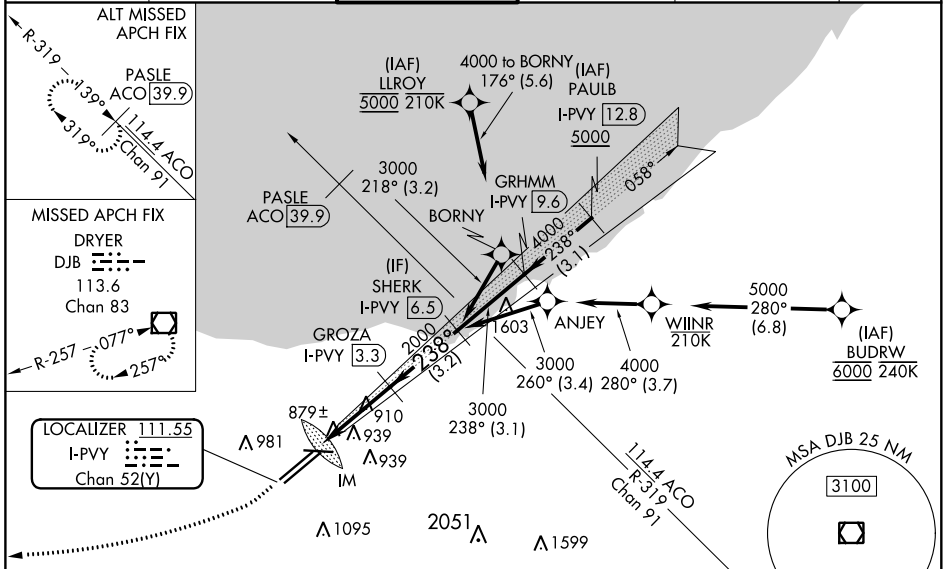
▼ CAT II: RVR 1000 authorized with specific OPSPEC, MSPEC, or LOA approval and use of autoland or HUD to touchdown. Simultaneous approach authorized. Simultaneous operations require use of vertical guidance; maintain last assigned altitude until established on glideslope.

ALSF-2



MISSED APPROACH: Climb to 1700 then climbing right turn to 3000 direct DJB VOR/DME and hold.

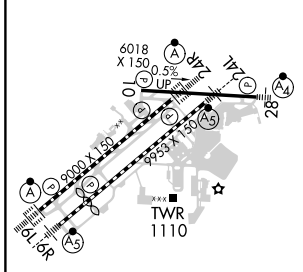
D-ATIS ARR 127.85 DEP 132.375	CLEVELAND APP CON 124.0 346.325	CLEVELAND TOWER 124.5 273.45	GND CON 121.7 273.45	CLNC DEL 125.05 273.45	CPDLC
---	---	--	--------------------------------	----------------------------------	-------



EC-2, 30 DEC 2021 to 27 JAN 2022

EC-2, 30 DEC 2021 to 27 JAN 2022

ELEV 799	D	TDZE 780
-----------------	----------	-----------------



1700	3000	DJB	VGSI and ILS glidepath not coincident (VGSI Angle 3.00/TCH 65).	SHERK I-PVY [6.5]
GROZA I-PVY [3.3]		2000		3000
IM 880		238°		GS 3.00° TCH 55
1064		3.7 NM		3.2 NM

CATEGORY	A	B	C	D
S-ILS 24R	CAT II RA 100/12 100 DA 880			
S-ILS 24R	CAT III RVR 06			

CATEGORY II & III ILS - SPECIAL AIRCREW & AIRCRAFT CERTIFICATION REQUIRED

REIL Rwy 10
TDZ/CL Rwy 6L, 6R, 24L and 24R
HIRL Rws 6L-24R, 6R-24L and 10-28