

LOC/DME I-PVY 111.55 Chan 52 (Y)	APP CRS 238°	Rwy Idg 24R 9000 9956 24L 780 786 Apt Elev 799 799
--	------------------------	---

ILS or LOC RWY 24R

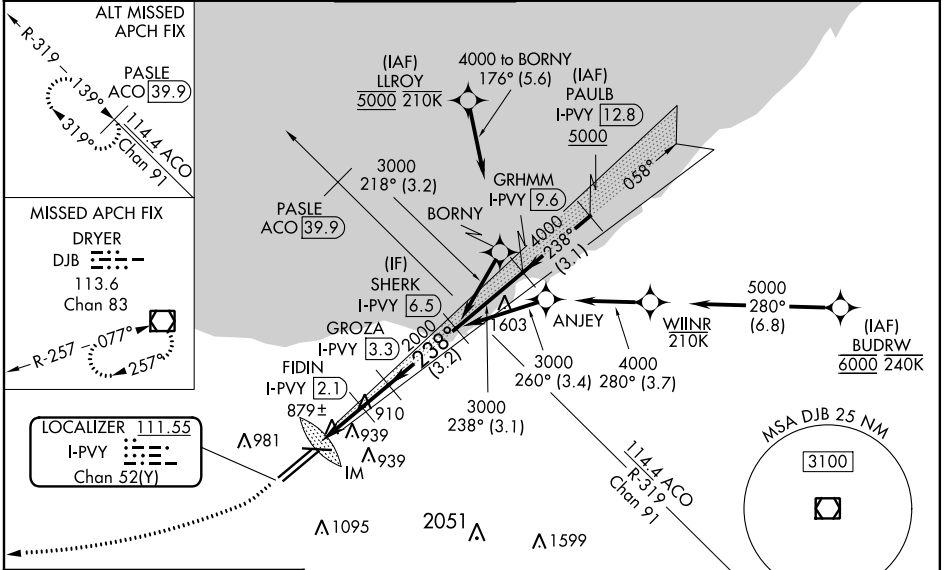
CLEVELAND-HOPKINS INTL (CLE)

DME required. Aircraft not DME/DME/IRU or GPS equipped - RADAR required for procedure entry. RNAV 1. From LLROY and BUDRW: RNAV 1-DME/DME/IRU or GPS required for procedure entry.

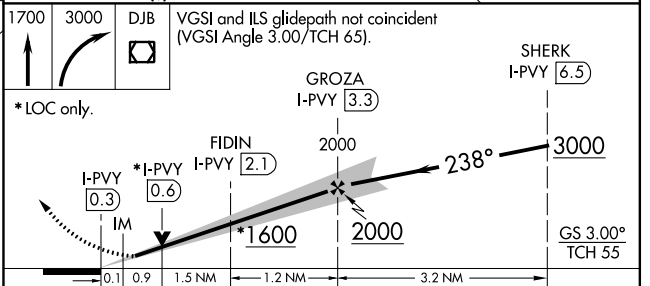
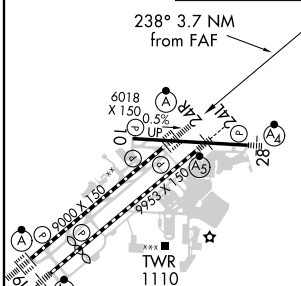
▼ Circling Rwy 10 NA at night. Simultaneous approach authorized. Simultaneous operations require use of vertical guidance; maintain last assigned altitude until established on glide slope. Inop table does not apply to sidestep 24L. For inop ALS, increase S-LOC 24R Cats C/D visibility to RVR 5500.

Rwy 24L MALSR 	Rwy 24R ALS-F-2 	MISSED APPROACH: Climb to 1700 then climbing right turn to 3000 direct DJB VOR/DME and hold.
----------------------	------------------------	--

D-ATIS ARR 127.85 DEP 132.375	CLEVELAND APP CON 124.0 346.325	CLEVELAND TOWER 124.5 273.45	GND CON 121.7 273.45	CLNC DEL 125.05 273.45	CPDLC
---	---	--	--------------------------------	----------------------------------	-------



ELEV 799	D TDZE 24R 780 TDZE 24L 786
-----------------	---



CATEGORY	A	B	C	D
S-ILS 24R	980/18		200 (200-½)	
S-LOC 24R	1140/24	360 (400-½)	1140/30	360 (400-¾)
SIDESTEP 24L	1280/55	494 (500-1)	1280-1½ 494 (500-1½)	1280-2 494 (500-2)
☐ CIRCLING	1420-1	621 (700-1)	1420-1¾ 621 (700-1¾)	1420-2 621 (700-2)

REIL Rwy 10
TDZ/CL Rwy 6L, 6R, 24L and 24R
HIRL Rwy 6L-24R, 6R-24L and 10-28

EC-2, 30 DEC 2021 to 27 JAN 2022

EC-2, 30 DEC 2021 to 27 JAN 2022